



Organizational Chart

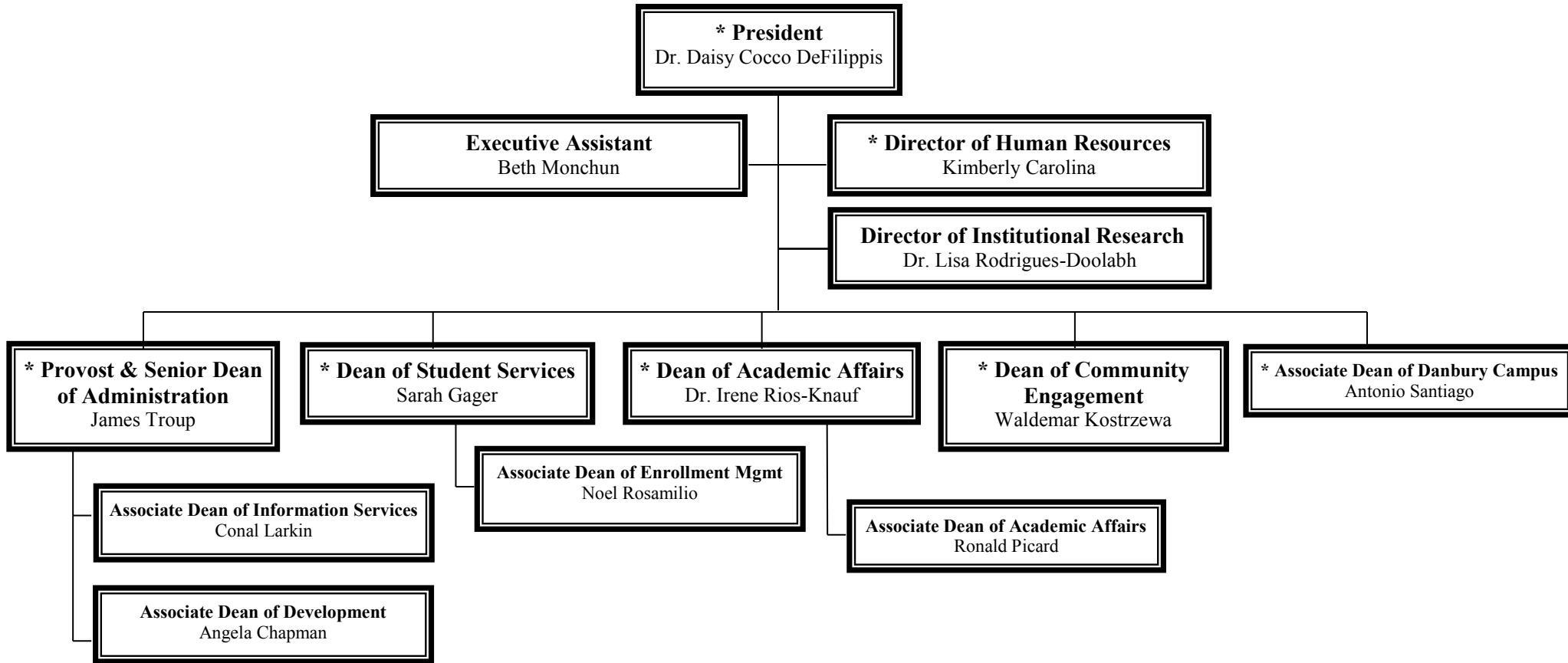
July 2017

NVCC’S ORGANIZATIONAL CHART ALPHABETICAL BY TITLE TABLE OF CONTENTS:

Advanced Manufacturing Technology Center	Page 7
Arts & Humanities Division	Page 18
Associate Dean of Academic Affairs	Page 11 a
Associate Dean of Development	Page 10
Associate Dean of Enrollment Management	Page 23
Associate Dean of Health Sciences & Director of Nursing	Page 16
Bridge to College Director	Page 12
Behavioral/Social Sciences Division (LABSS)	Page 17
Business Division (includes Fire/AutoTech/Aviation)	Page 14
CAPSS	Page 24
Center for Job Placement & College Opportunities (CJPCO)	Page 9
Community & Economic Development	Page 8
Danbury Campus	Page 21
Dean of Academic Affairs	Page 11
Dean of Students	Page 20
Facilities	Page 5
Finance & Administrative Services	Page 4
Financial Aid Services	Page 25
Human Resources	Page 26
Information Technology	Page 3
Liberal Arts Division (LABSS)	Page 18
Library Services	Page 13
Maintenance Department	Page 5a
Marketing and Public Relations	Page 22
President	Page 1
Provost & Senior Dean of Administration	Page 2
Public Safety	Page 6
Registrar	Page 19
STEM Division	Page 15

Naugatuck Valley Community College
ORGANIZATIONAL CHART

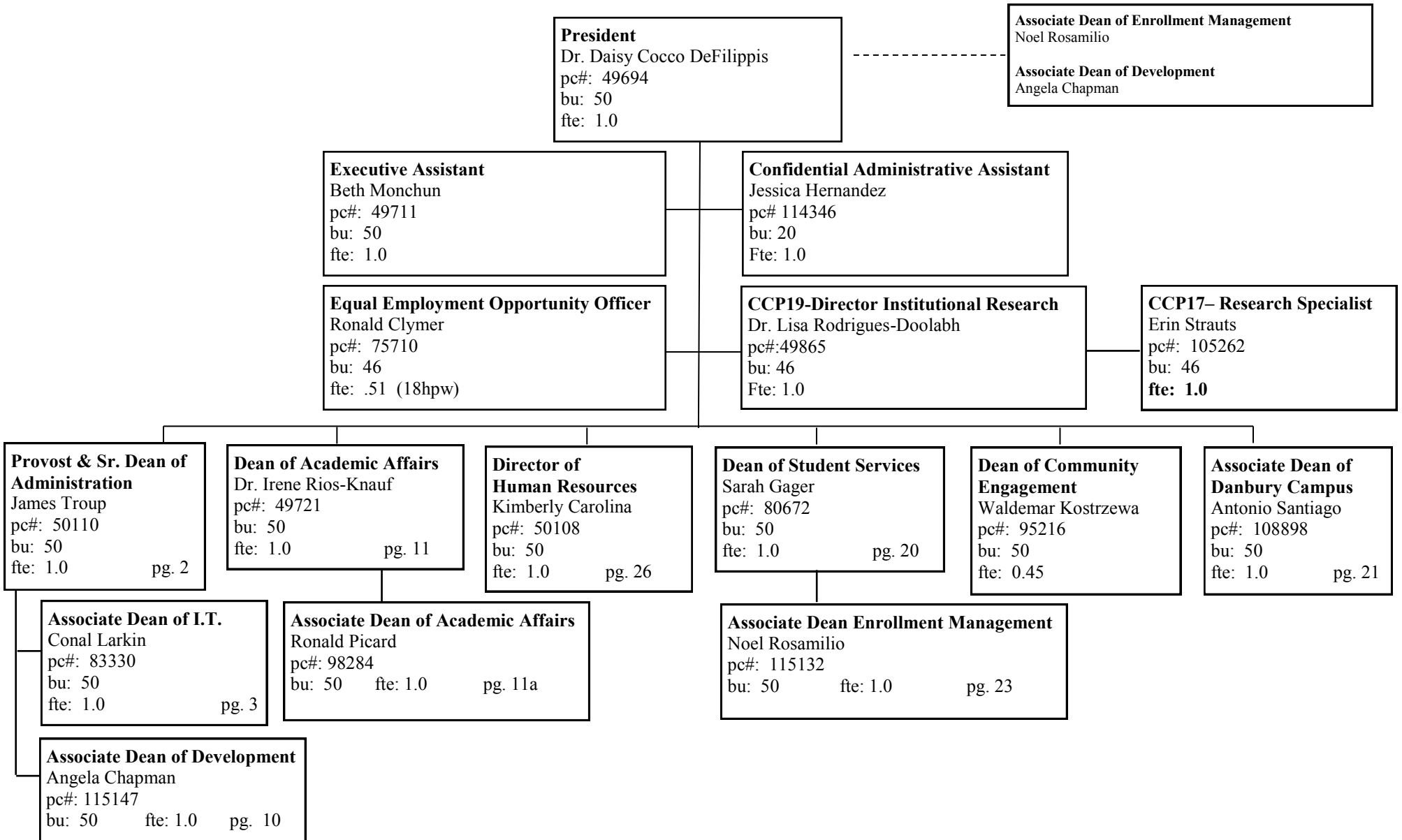
Management Team AND Extended Cabinet Members



* Denotes Policy Team Members

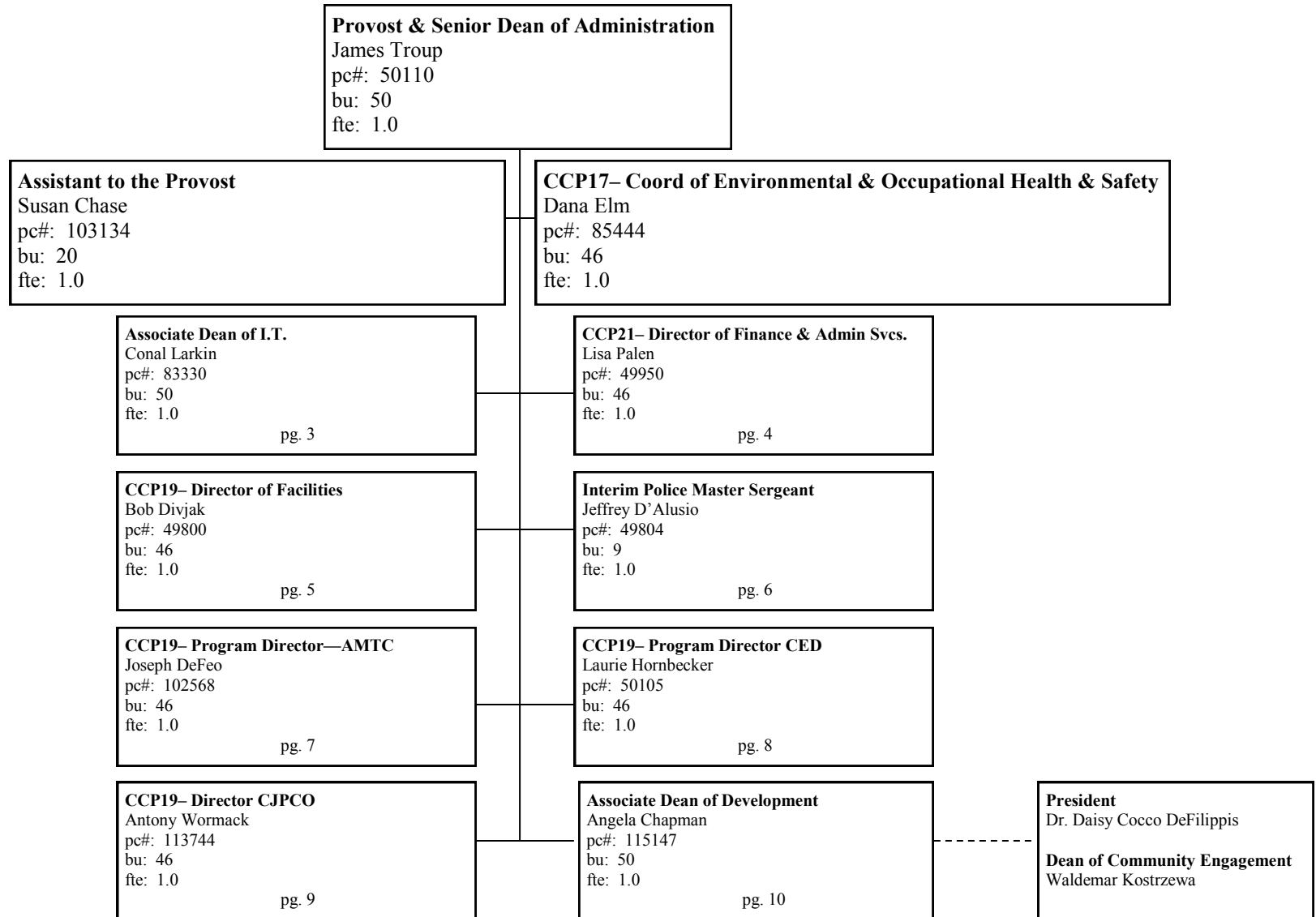
Naugatuck Valley Community College
ORGANIZATIONAL CHART

Office of the President - Page 1



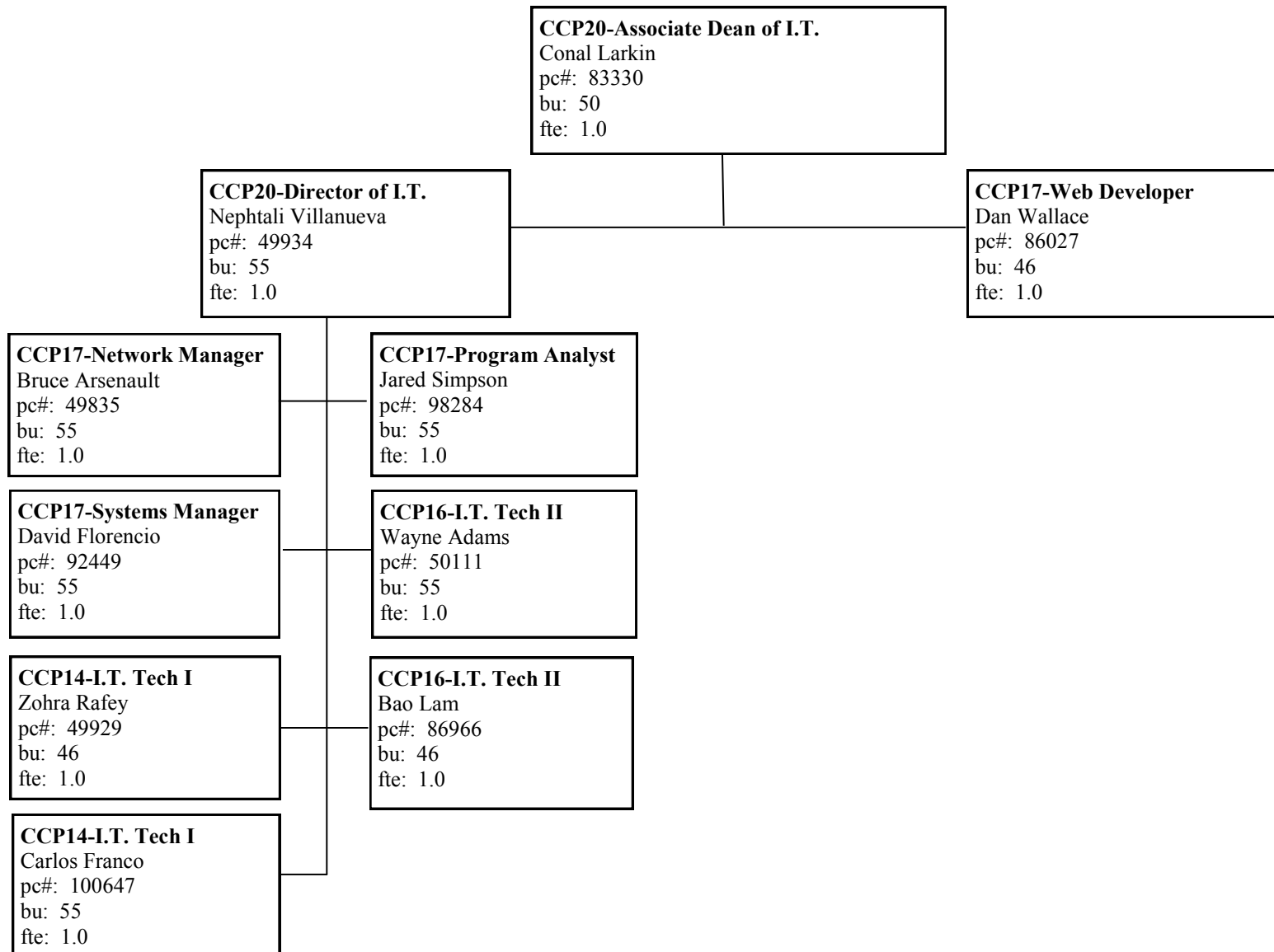
Naugatuck Valley Community College
ORGANIZATIONAL CHART

Provost & Senior Dean of Administration - Page 2



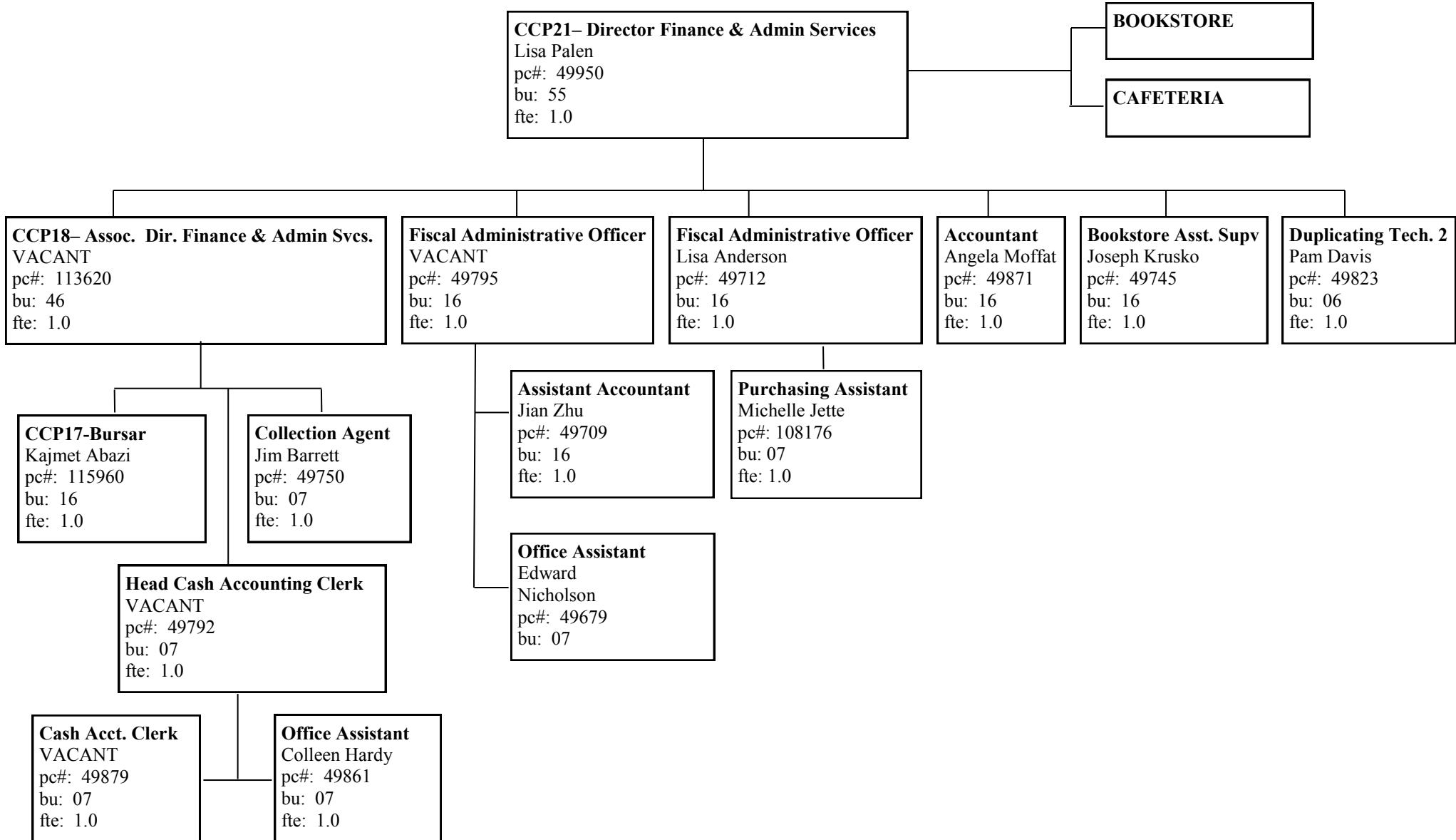
Naugatuck Valley Community College
ORGANIZATIONAL CHART

Information Technology - Page 3



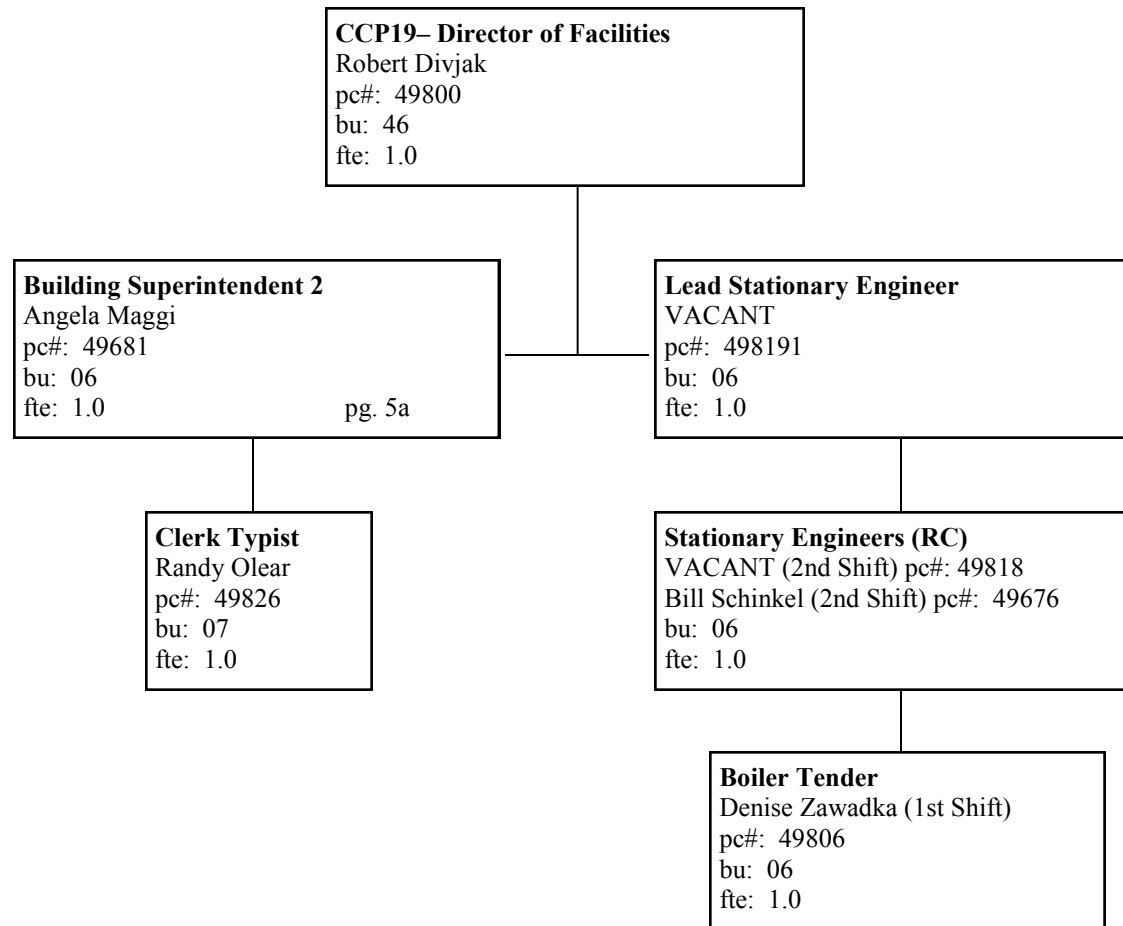
Naugatuck Valley Community College
ORGANIZATIONAL CHART

Director of Finance & Administrative Services - Page 4



Naugatuck Valley Community College
ORGANIZATIONAL CHART

Facilities Department - Page 5



Naugatuck Valley Community College
ORGANIZATIONAL CHART

Maintenance Department - Page 5a

Building Superintendent 2
 Angela Maggi
 pc#: 49681
 bu: 06
 fte: 1.0

Clerk Typist
 Randy Olear
 pc#: 49826
 bu: 07
 fte: 1.0

Lead Custodians
 Veni Echevarria-2nd Shift
 Beth Vail-2nd Shift
 bu: 06; fte: 1.00

QCWs, bu: 06, fte: 1.0, BA1
 VACANT, Painter
 Thomas Poland, Locksmith
 Bill Dilege, Plumber
 John Cammuso, HVAC
 Tom O'Brien, Electrician

Custodians (1st Shift)
 Enrico DiMascia
 David Creel
 Mark Niesobecki

Skilled Maintainer
 Leonardo Valestra

Maintainer Grounds
 Christopher Reeves
 pc# 91914
 bu: 06

Material Storage Spec.
 Carmine Ciampi
 pc#: 49813
 bu: 06

Custodians 2nd Shift: bu: 06, fte: 1.0:
 John Fornito
 Maria Cruz
 Fred Gauthier
 Crystal Quinones
 Evelin Adames
 Robert Casini
 Thomas Lorme
 Luis Lopez
 Michael Paulone
 Obdulio Plaza
 Alex Horvath, III
 Gregory Jefferson
 Janet Cole
 Katherine Vadnais
 Jesse Diaz

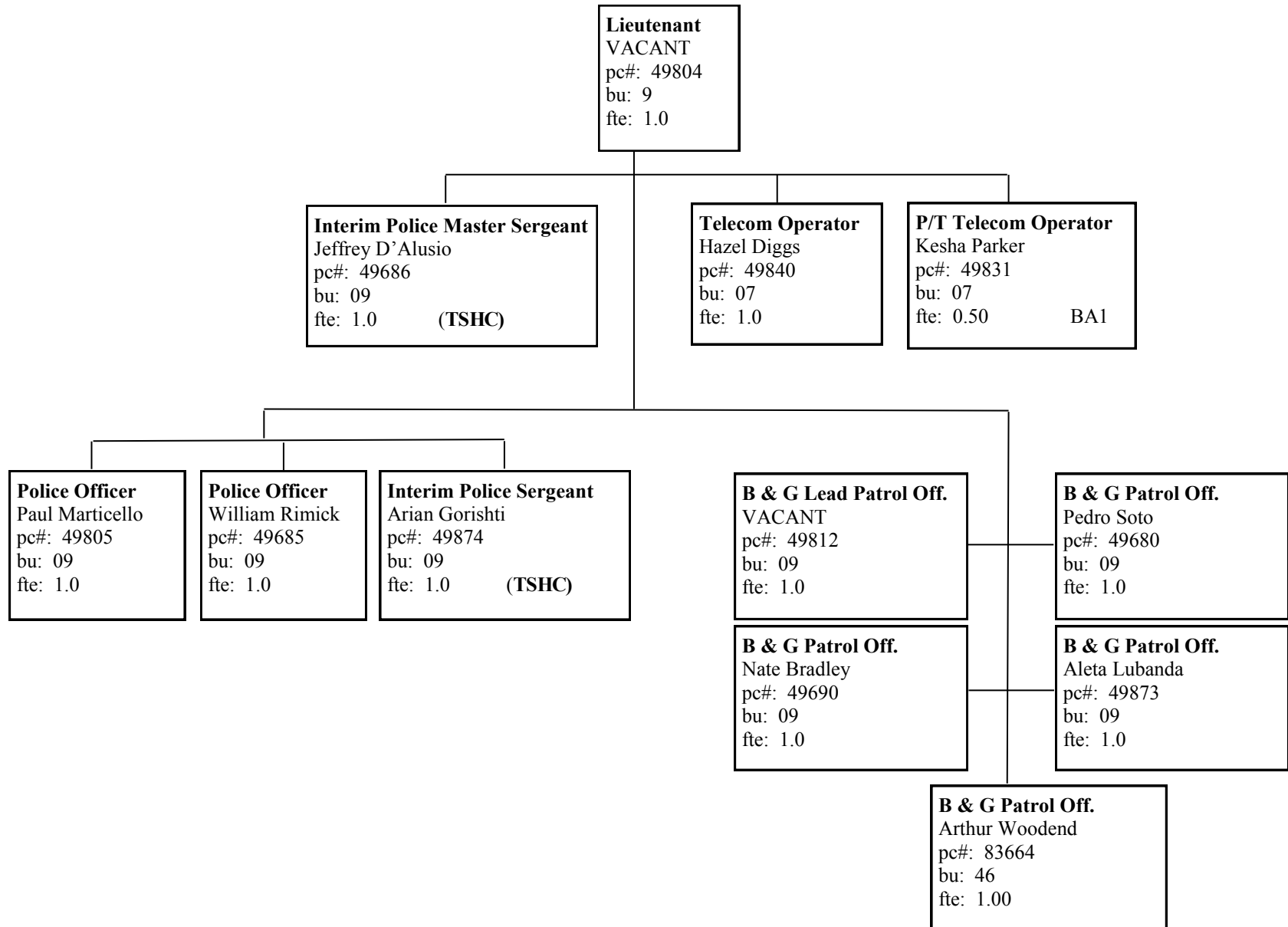
Part Time Custodians: bu: 06, fte: 0.45:
 Brett Kales - 2nd Shift
 Vacant—1st shift Danbury Campus
 Vacant—1st Shift Waterbury Campus

Storekeeper Assistant
 Modestino Perugini
 pc#: 49803
 bu: 06

Storekeeper Assistant
 Joseph Correia
 pc#: 105463
 bu: 06
 fte: 1.0

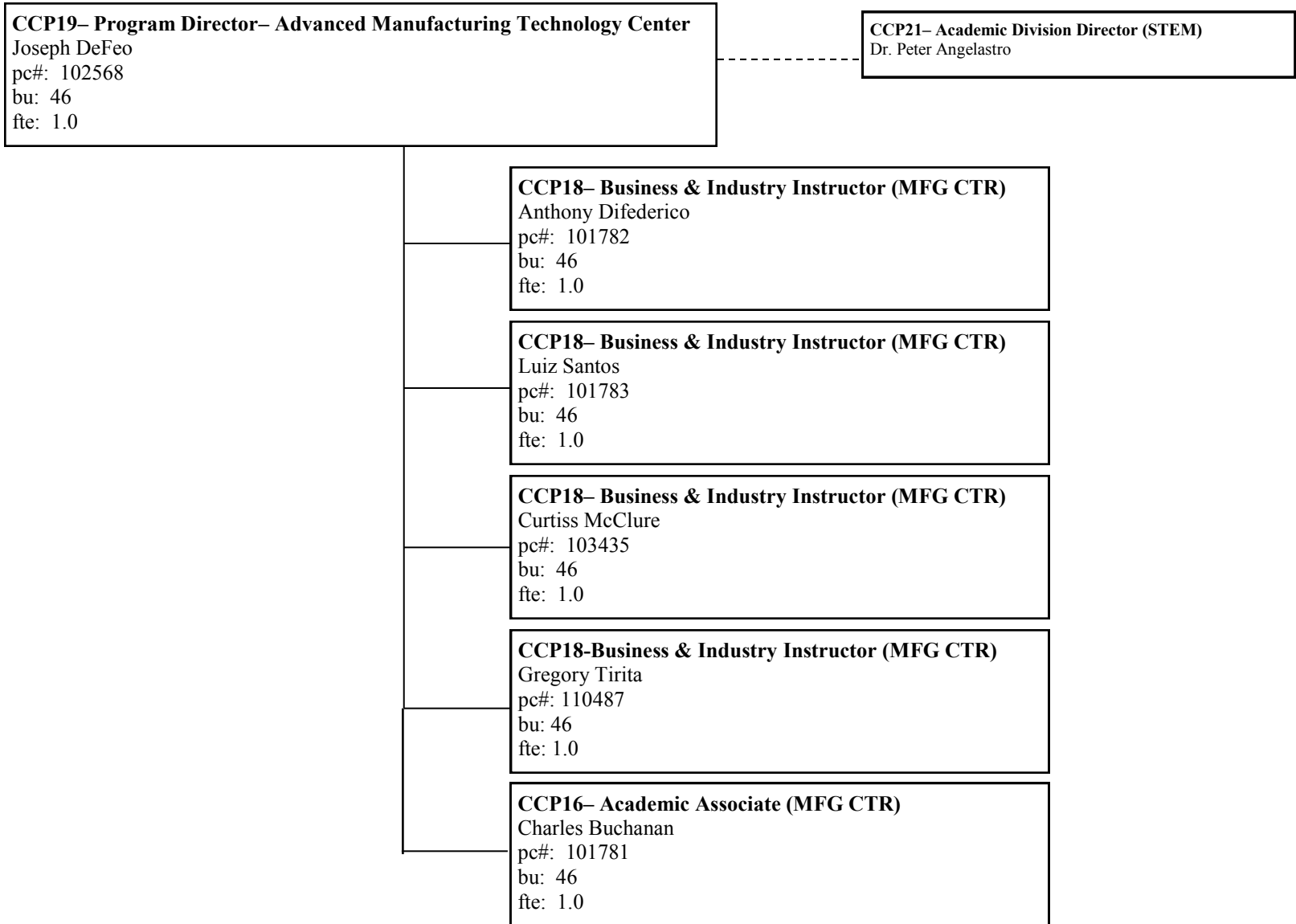
Naugatuck Valley Community College
ORGANIZATIONAL CHART

Public Safety Department - Page 6



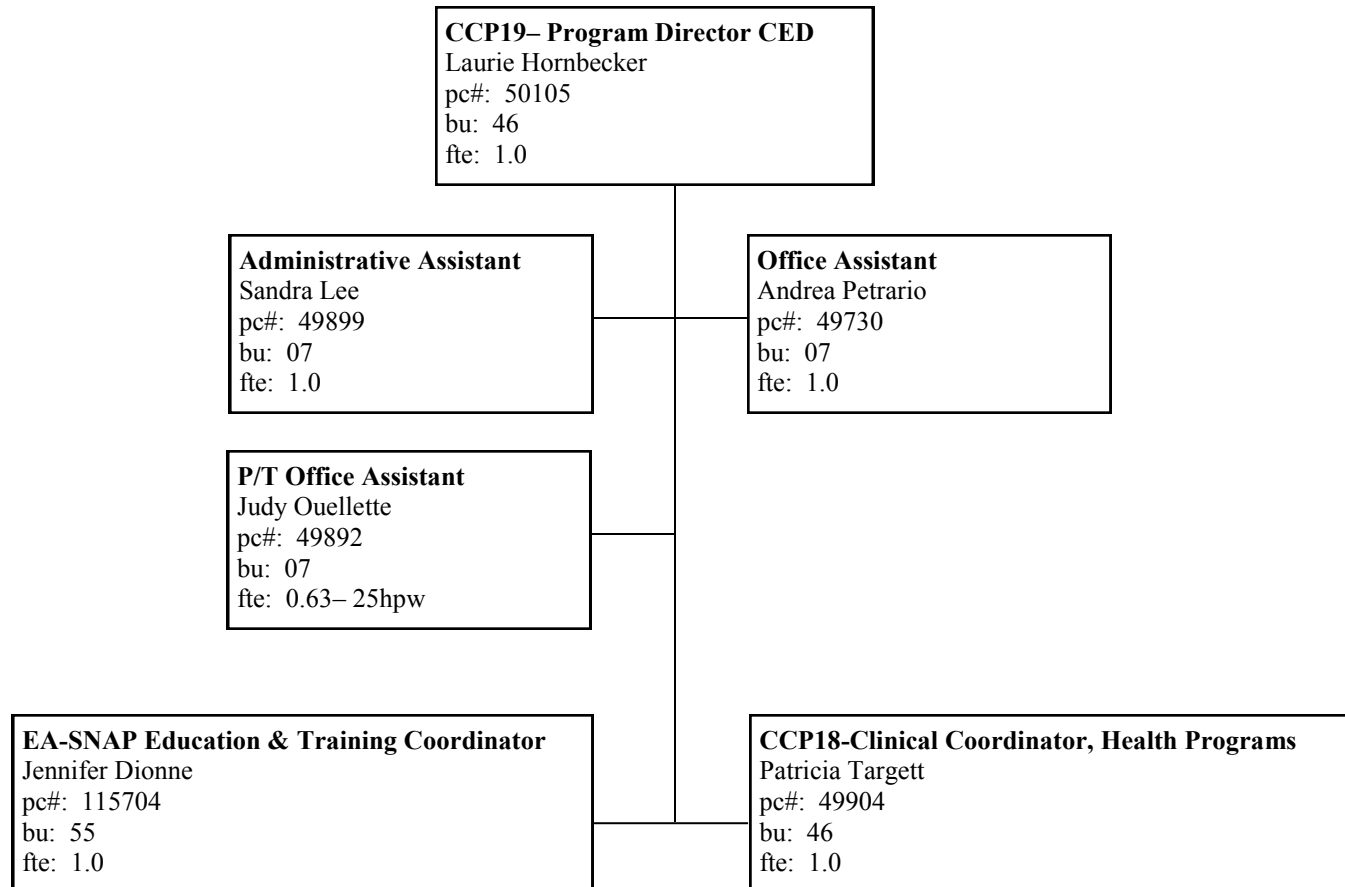
Naugatuck Valley Community College
ORGANIZATIONAL CHART

Advanced Manufacturing Technology Center - Page 7



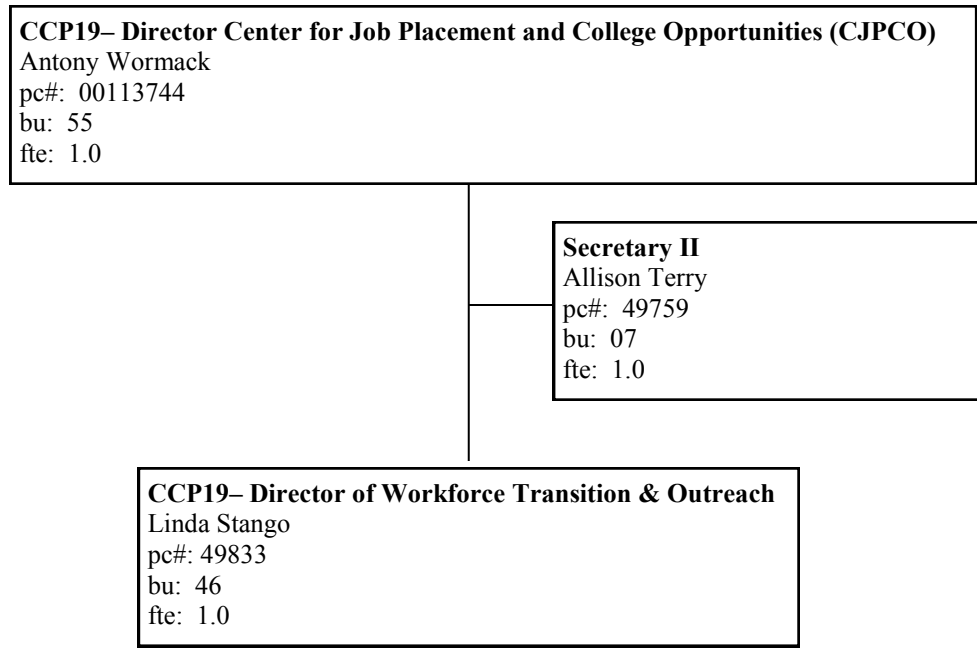
Naugatuck Valley Community College
ORGANIZATIONAL CHART

Community & Economic Development - Page 8



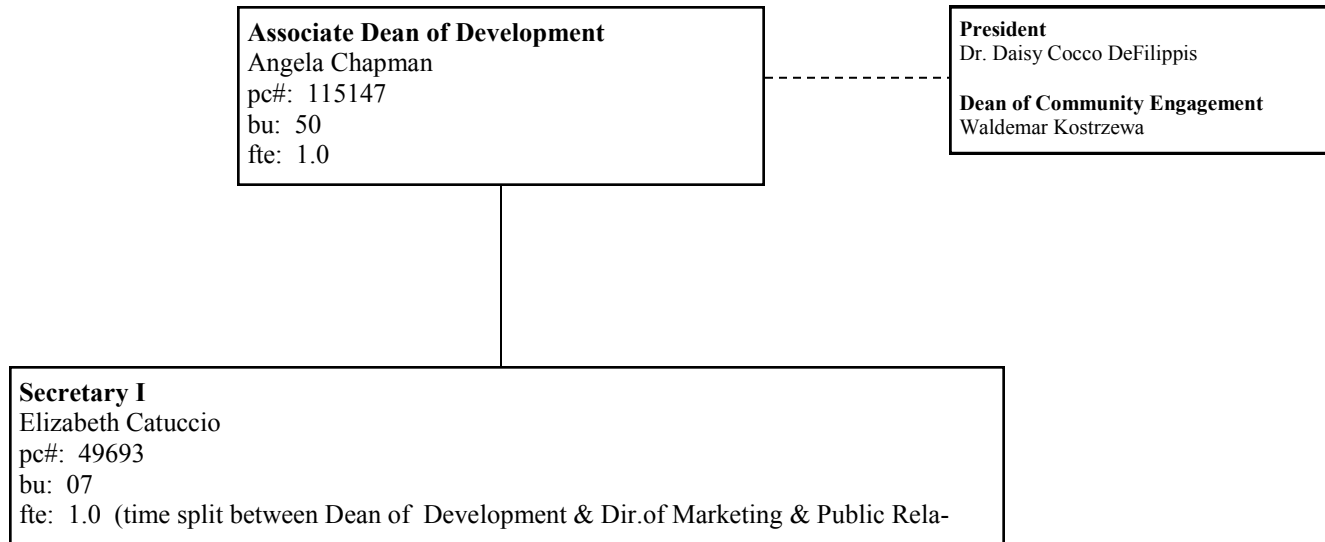
Naugatuck Valley Community College
ORGANIZATIONAL CHART

Center for Job Placement and College Opportunities (CJPCO) - Page 9



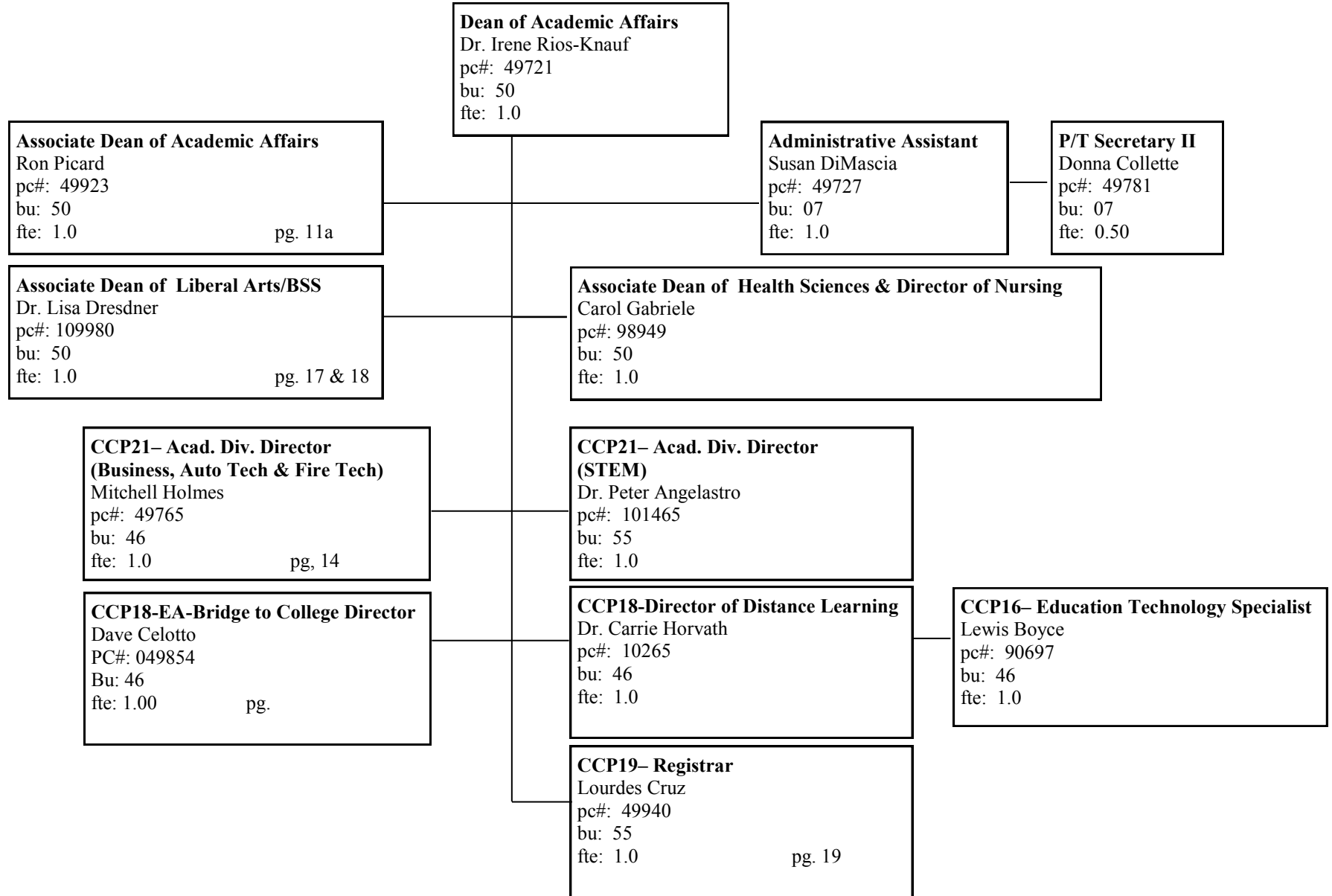
Naugatuck Valley Community College
ORGANIZATIONAL CHART

Development - Page 10



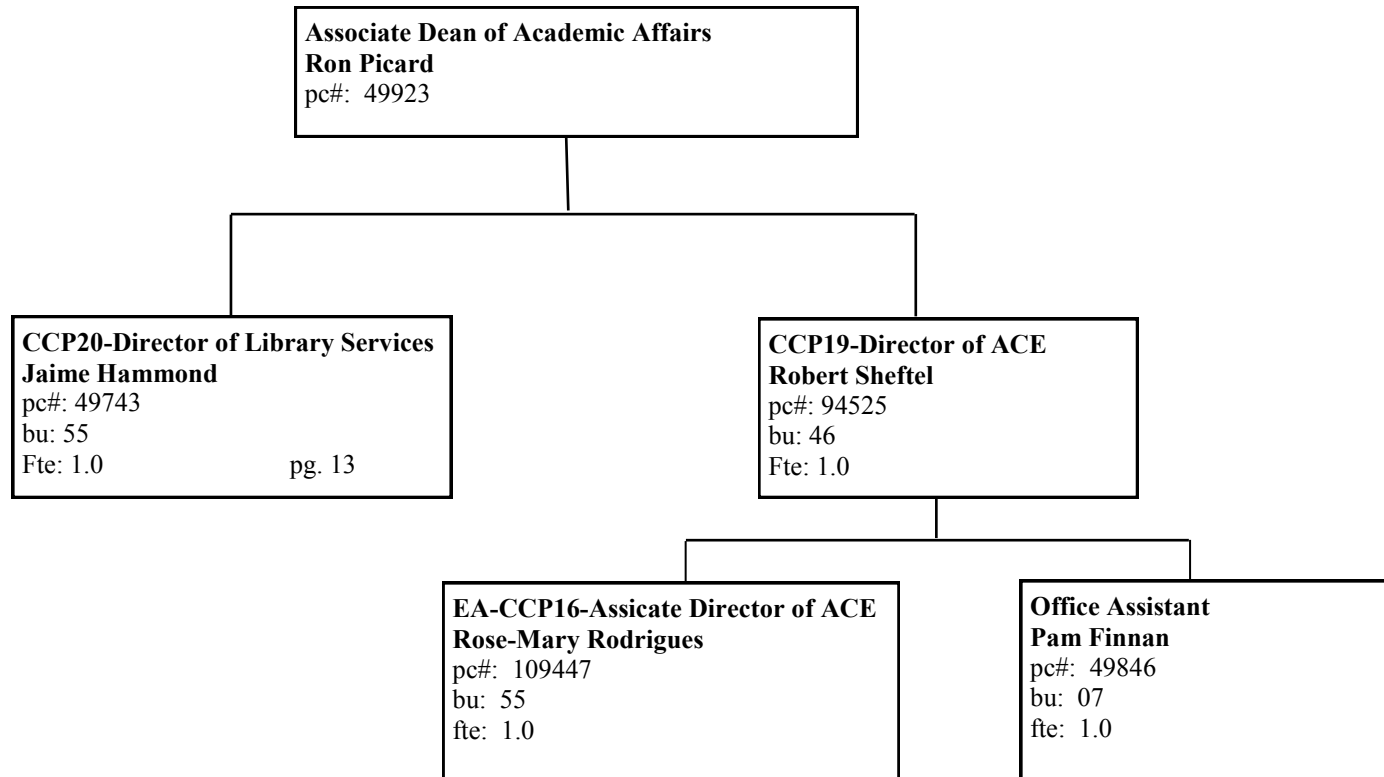
Naugatuck Valley Community College
ORGANIZATIONAL CHART

Dean of Academic Affairs - Page 11



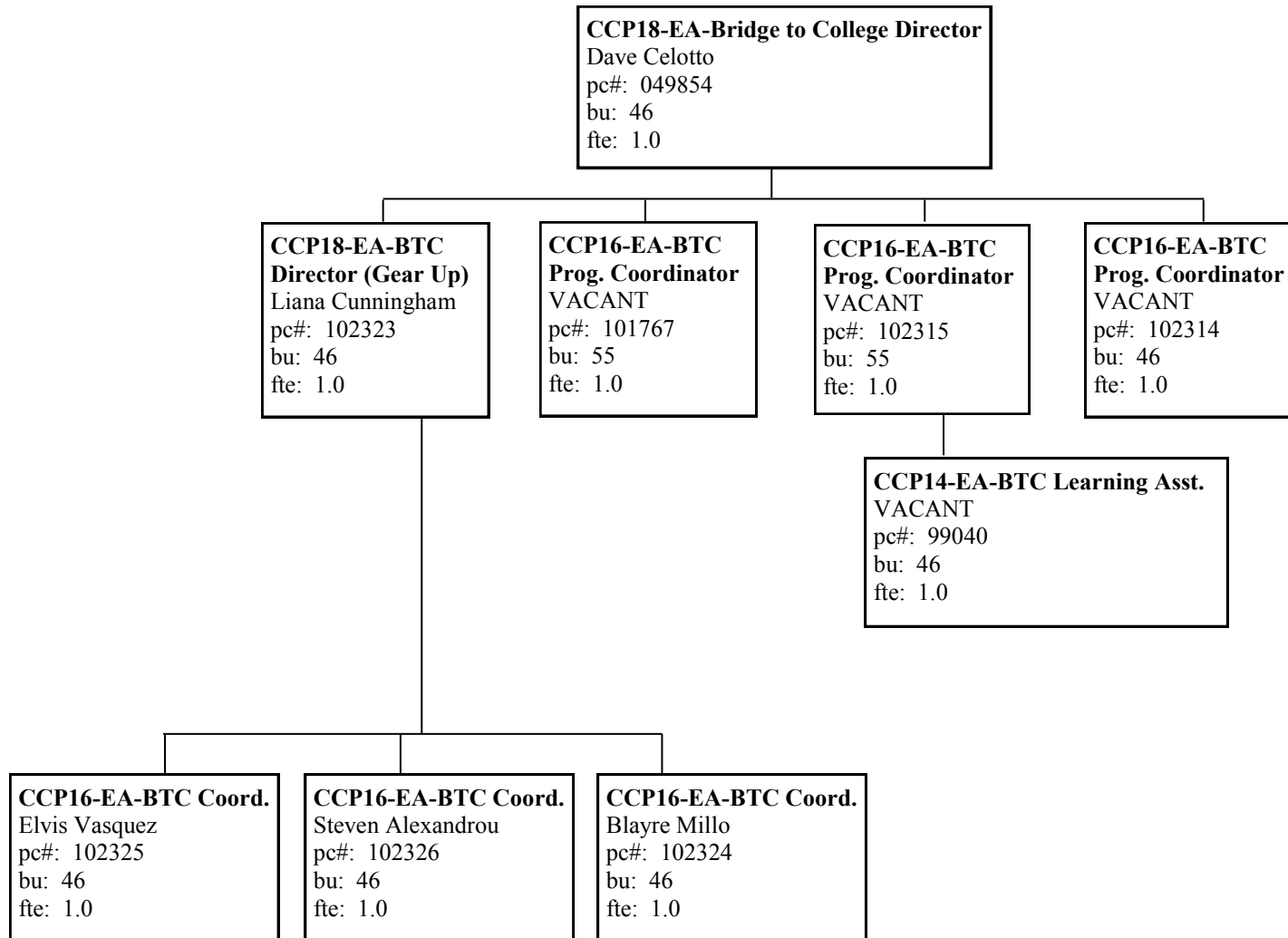
Naugatuck Valley Community College
ORGANIZATIONAL CHART

Associate Dean of Academic Affairs - Page 11a



Naugatuck Valley Community College
ORGANIZATIONAL CHART

Bridge to College Director - Page 12



Naugatuck Valley Community College
ORGANIZATIONAL CHART

Library Services - Page 13

CCP20-Director of Library Services
Jaime Hammond
pc#: 49743
bu: 55
fte: 1.0

CCP12- Library Assistant
VACANT
pc#: 50128
bu: 46
fte: 1.0

CCP14- Library Associate
Elaine Milnor
pc#: 49832
bu: 46
fte: 1.0

CCP18- Technical Services Librarian
Alison Wang
pc#: 50103
bu: 46
fte: 1.0

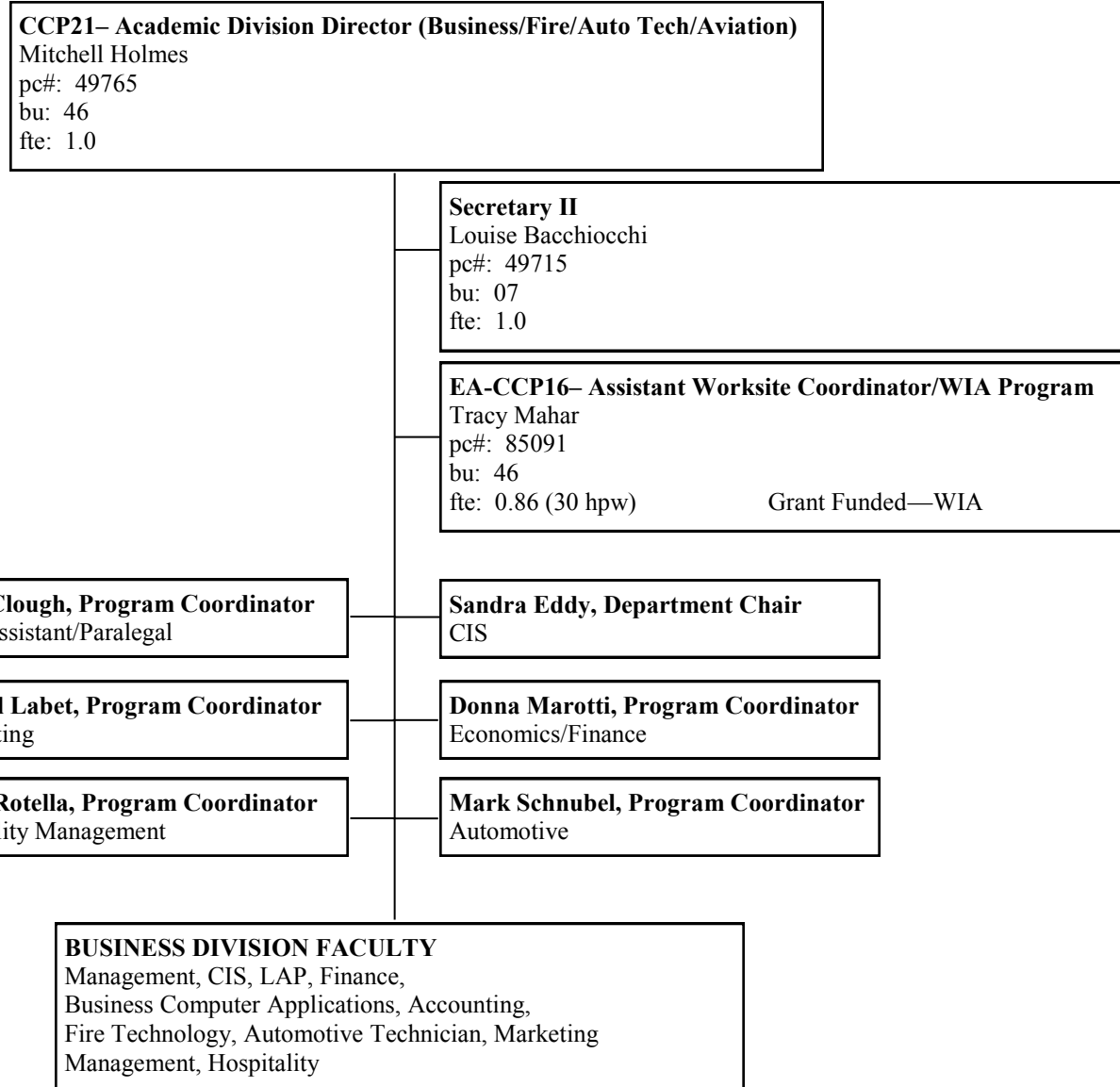
CCP18- Librarian
Elizabeth Frechette
pc#: 49696
bu: 46
fte: 1.0

CCP18- Librarian
John Leonetti
pc#: 50102
bu: 46
fte: 1.0

CCP18- Librarian
Jenna Stebbins
pc#: 49942
bu: 78
fte: 1.0

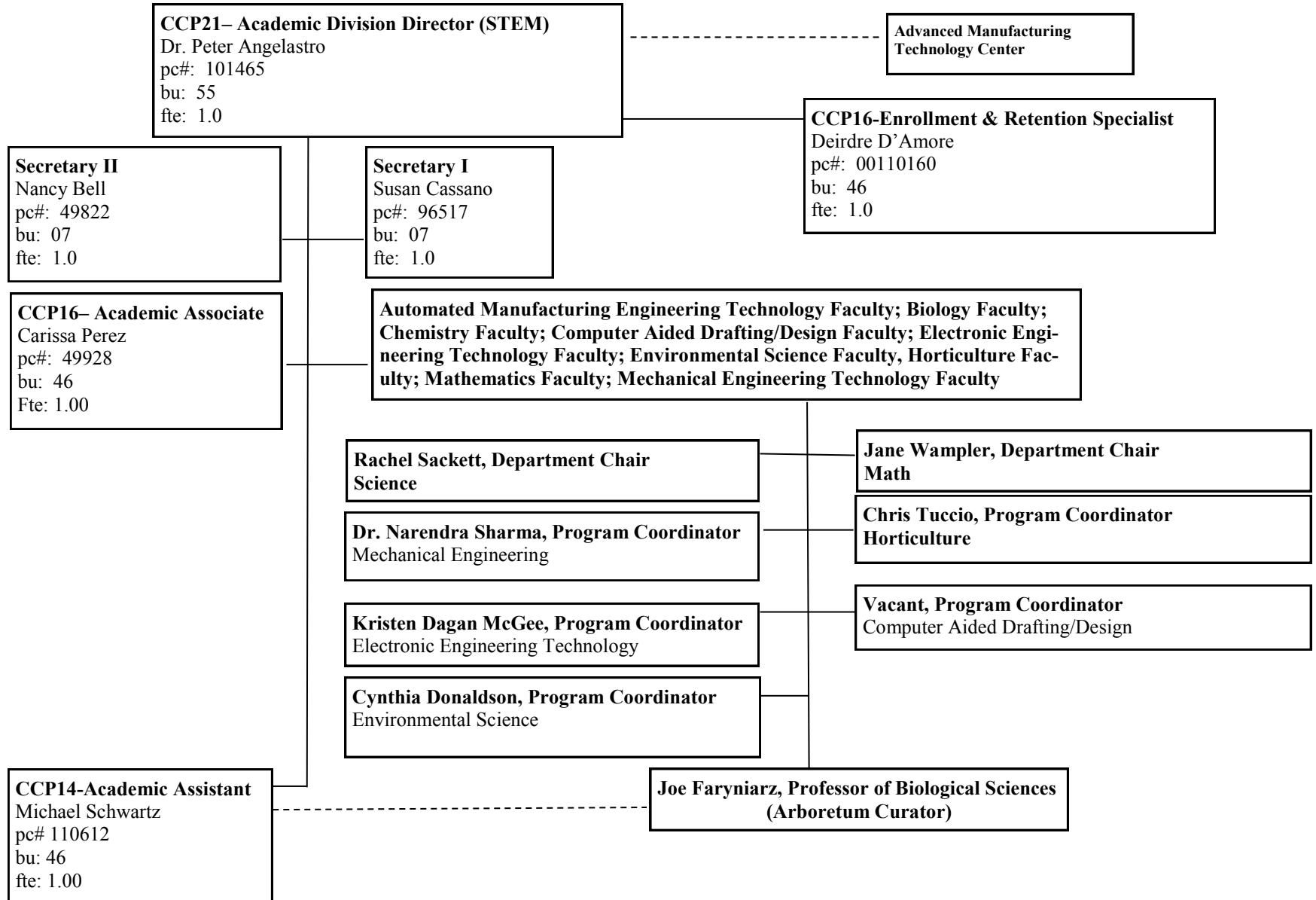
Naugatuck Valley Community College
ORGANIZATIONAL CHART

Business/Fire/Auto Tech/Aviation/Hospitality Division - Page 14



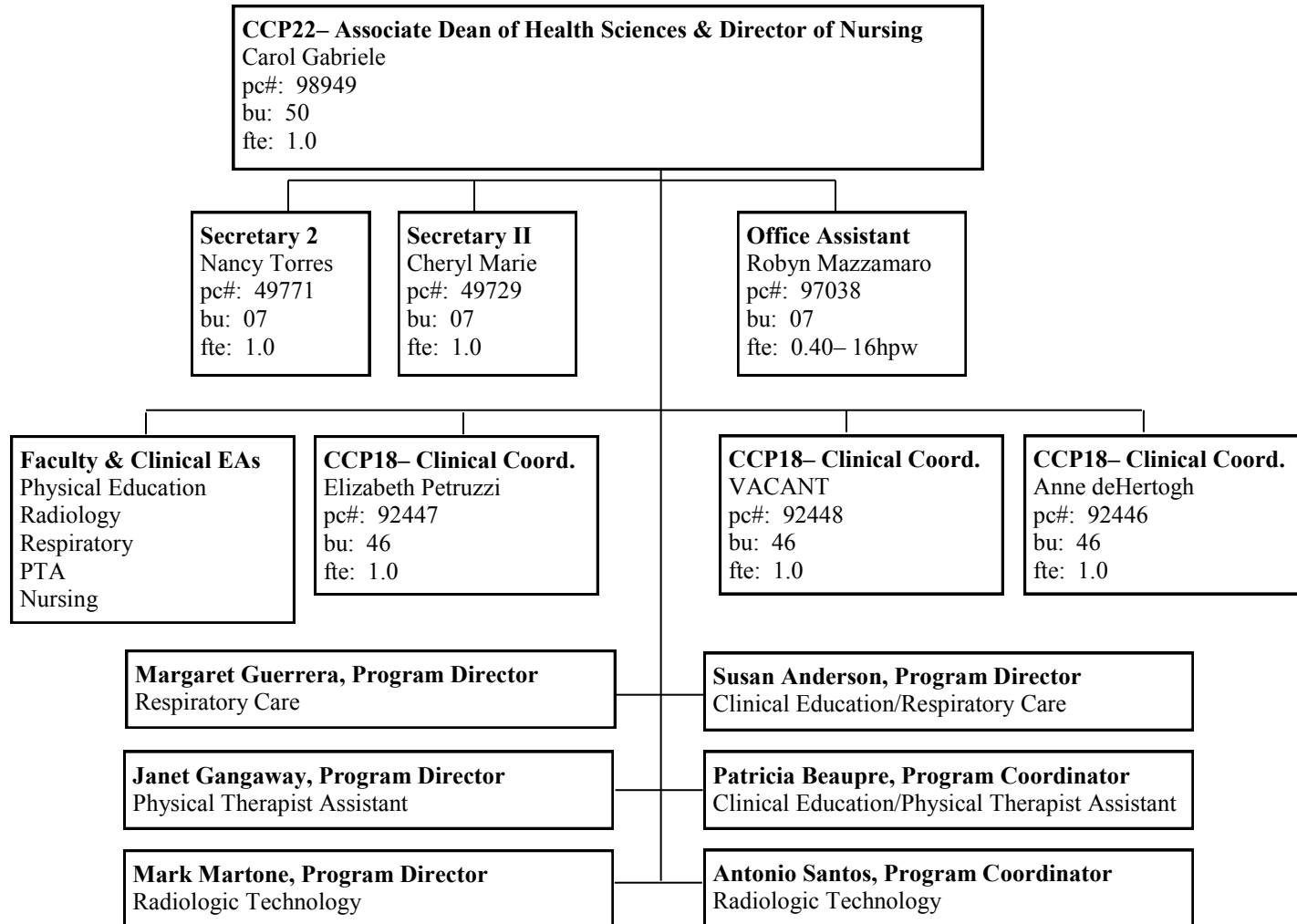
Naugatuck Valley Community College
ORGANIZATIONAL CHART

STEM Division - Page 15



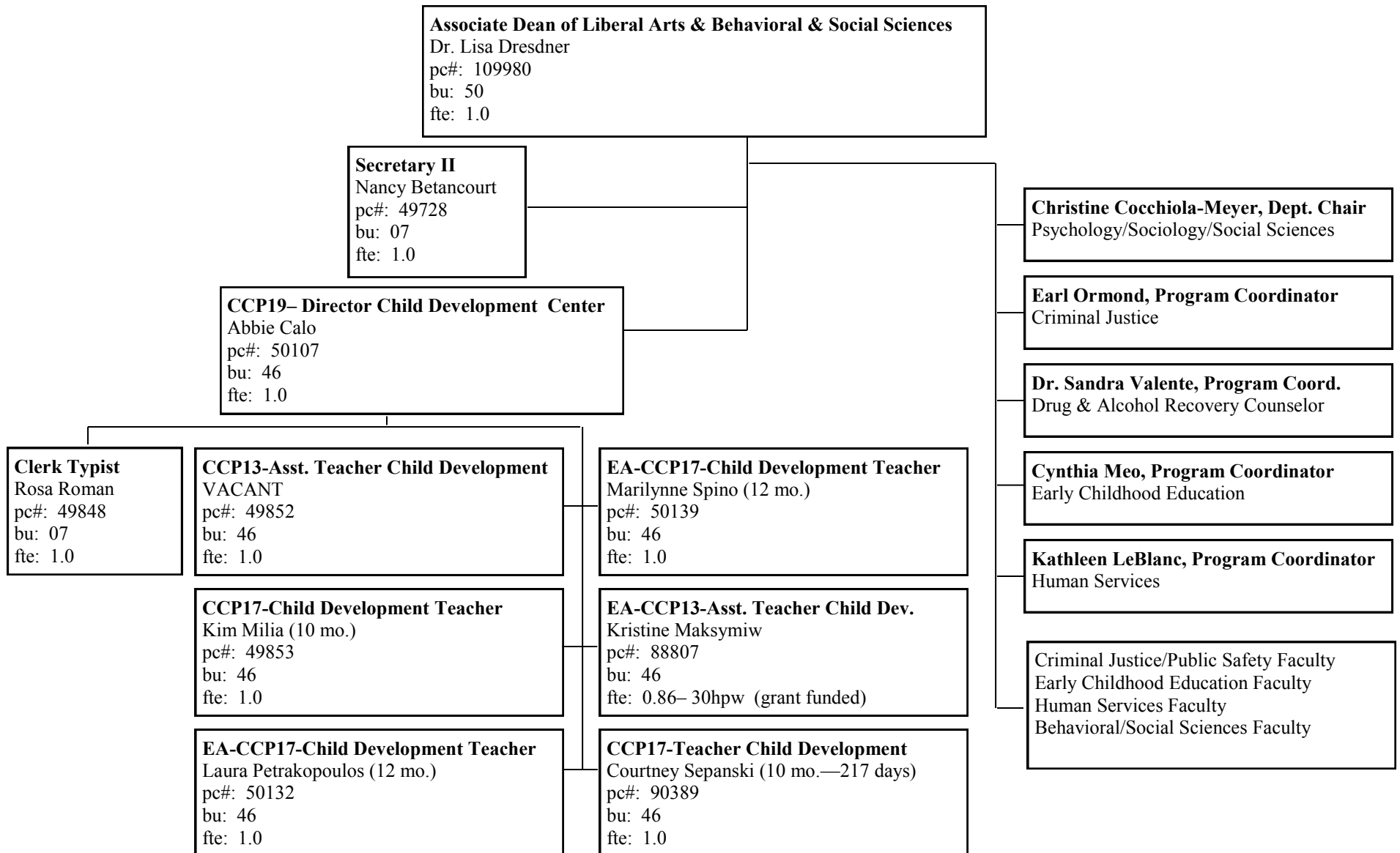
Naugatuck Valley Community College
ORGANIZATIONAL CHART

Associate Dean of Health Sciences & Director of Nursing - Page 16



Naugatuck Valley Community College
ORGANIZATIONAL CHART

Behavioral & Social Sciences Division - Page 17



Naugatuck Valley Community College
ORGANIZATIONAL CHART

Liberal Arts Division - Page 18

Associate Dean of Liberal Arts & Behavioral /Social Sciences
Dr. Lisa Dresdner
pc#: 109980
bu: 50
fte: 1.0

Secretary 1
Elizabeth Hoblack
pc#: 49872
bu: 07
fte: 1.0

CCP18-ESL Program Director
Karlene Ball
pc#: 49941
bu: 46
fte: 1.0

CCP18-Technical Coord. Fine Arts Center Theater
Jonathan Curns
pc#: 49858
bu: 1.0
fte: 1.0

Julia Petitfrere, Department Chair
Developmental English/Communications

Patricia Pallis, Department Chair
Humanities

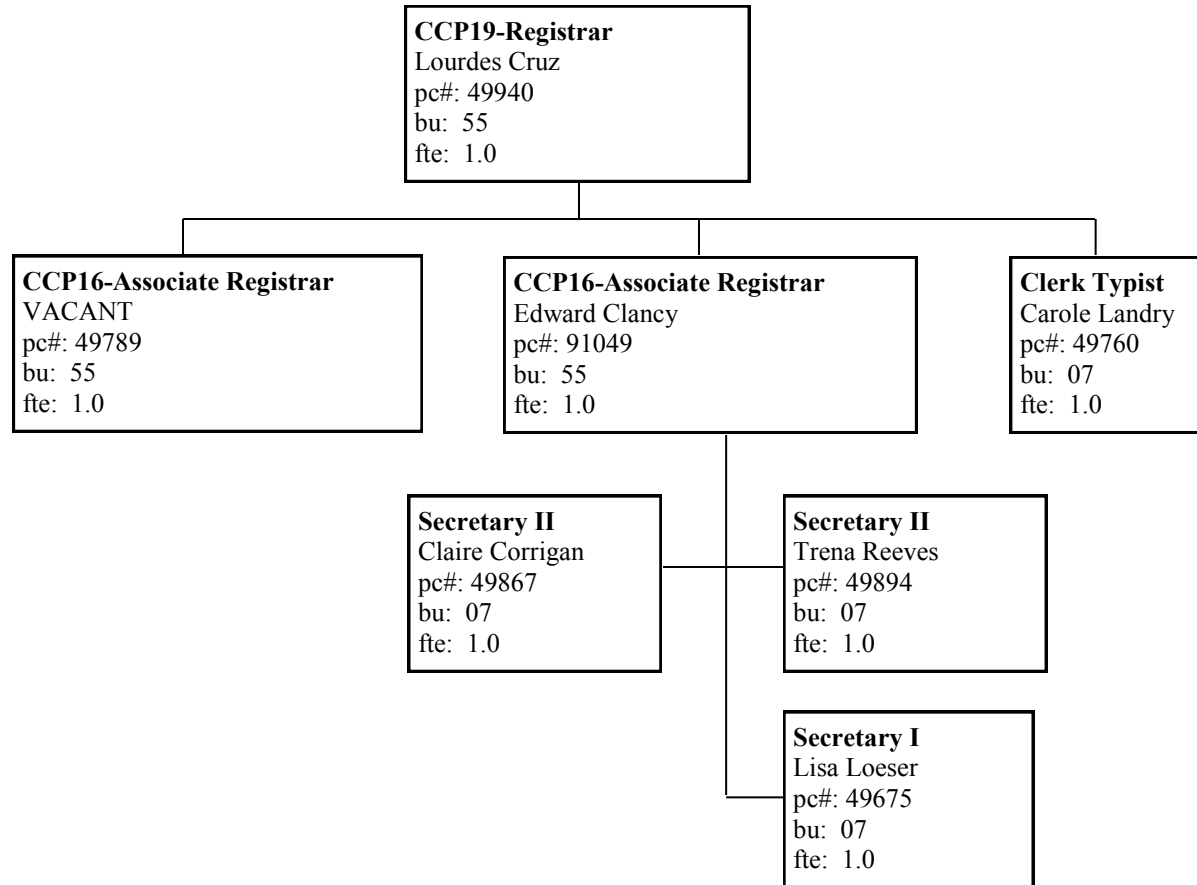
Department Chair - VACANT
The Arts

Ray Leite, Program Coordinator
DAT

Dance Faculty, Art Faculty,
English/Speech Faculty, Modern
Language Faculty, Music Faculty,
Drama Faculty, Philosophy Faculty,
Humanities Faculty

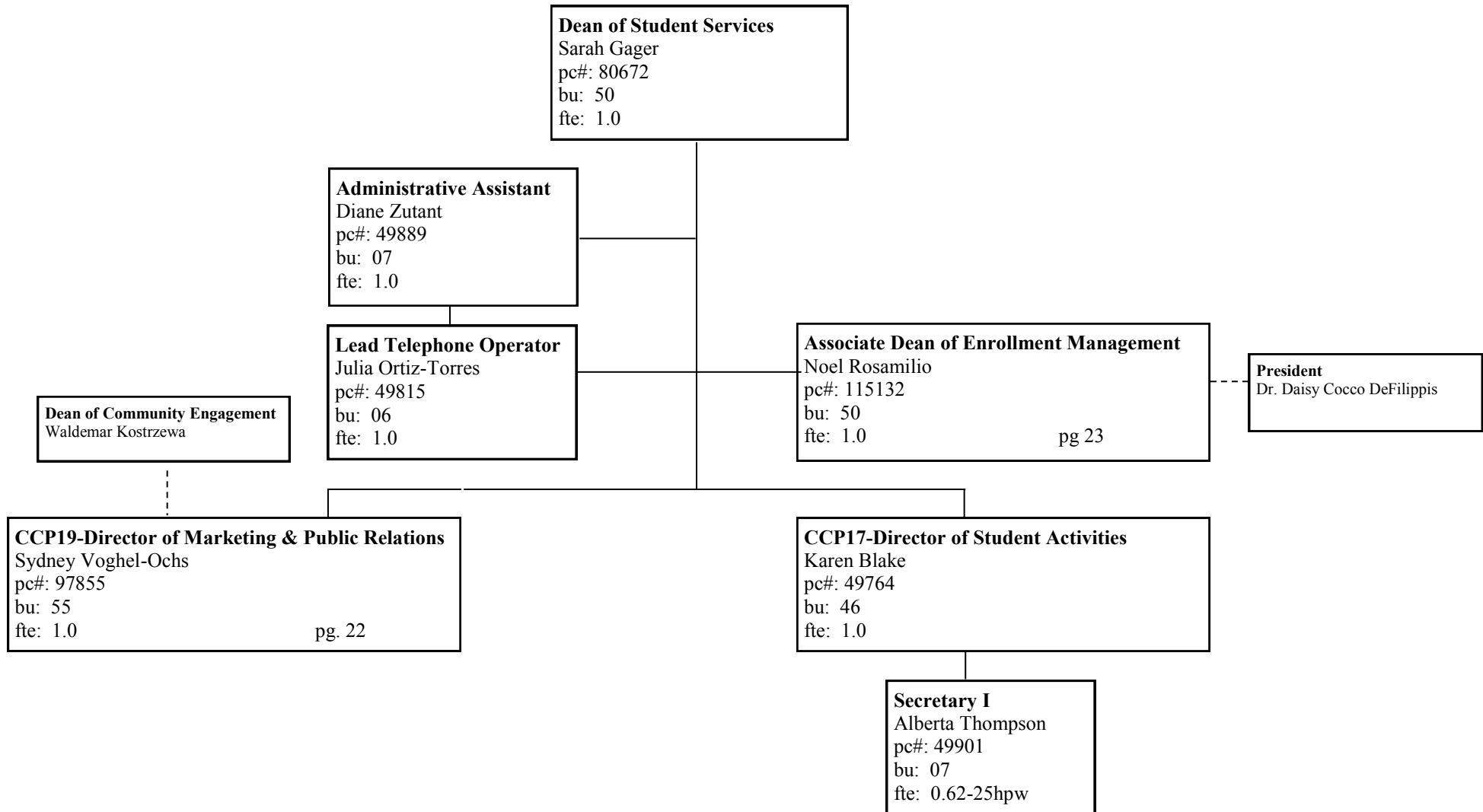
Naugatuck Valley Community College
ORGANIZATIONAL CHART

Office of the Registrar - Page 19



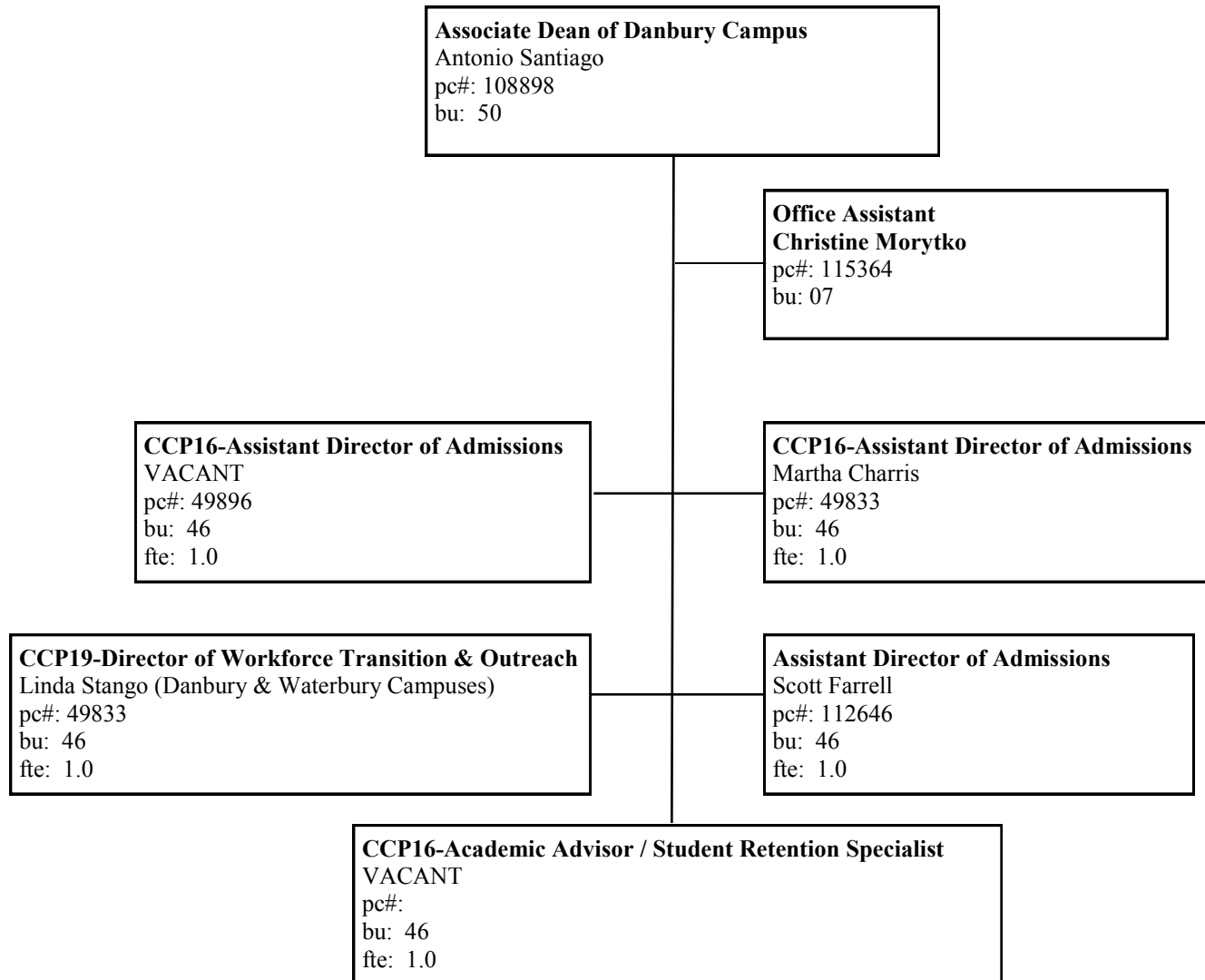
Naugatuck Valley Community College
ORGANIZATIONAL CHART

Dean of Students - Page 20



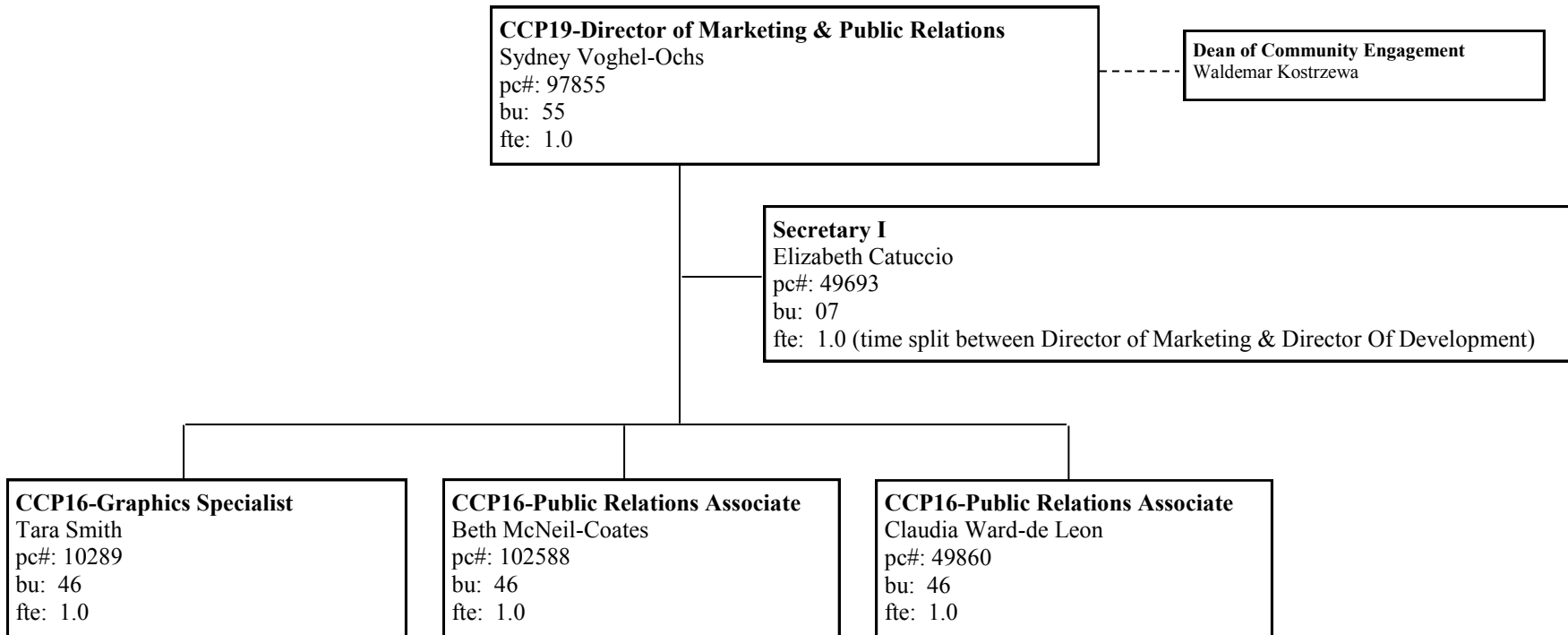
Naugatuck Valley Community College
ORGANIZATIONAL CHART

Danbury Campus - Page 21



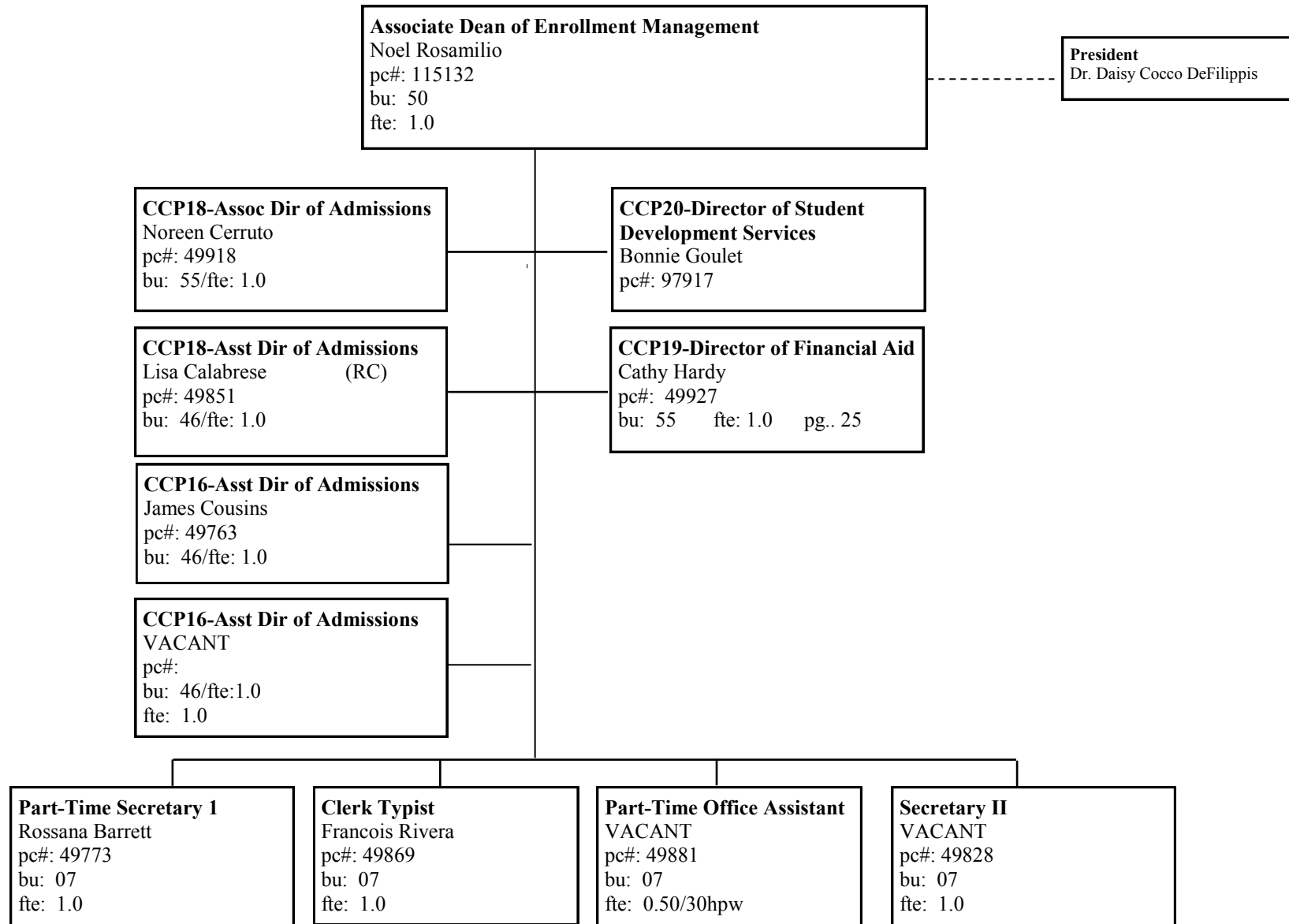
Naugatuck Valley Community College
ORGANIZATIONAL CHART

Marketing & Public Relations - Page 22



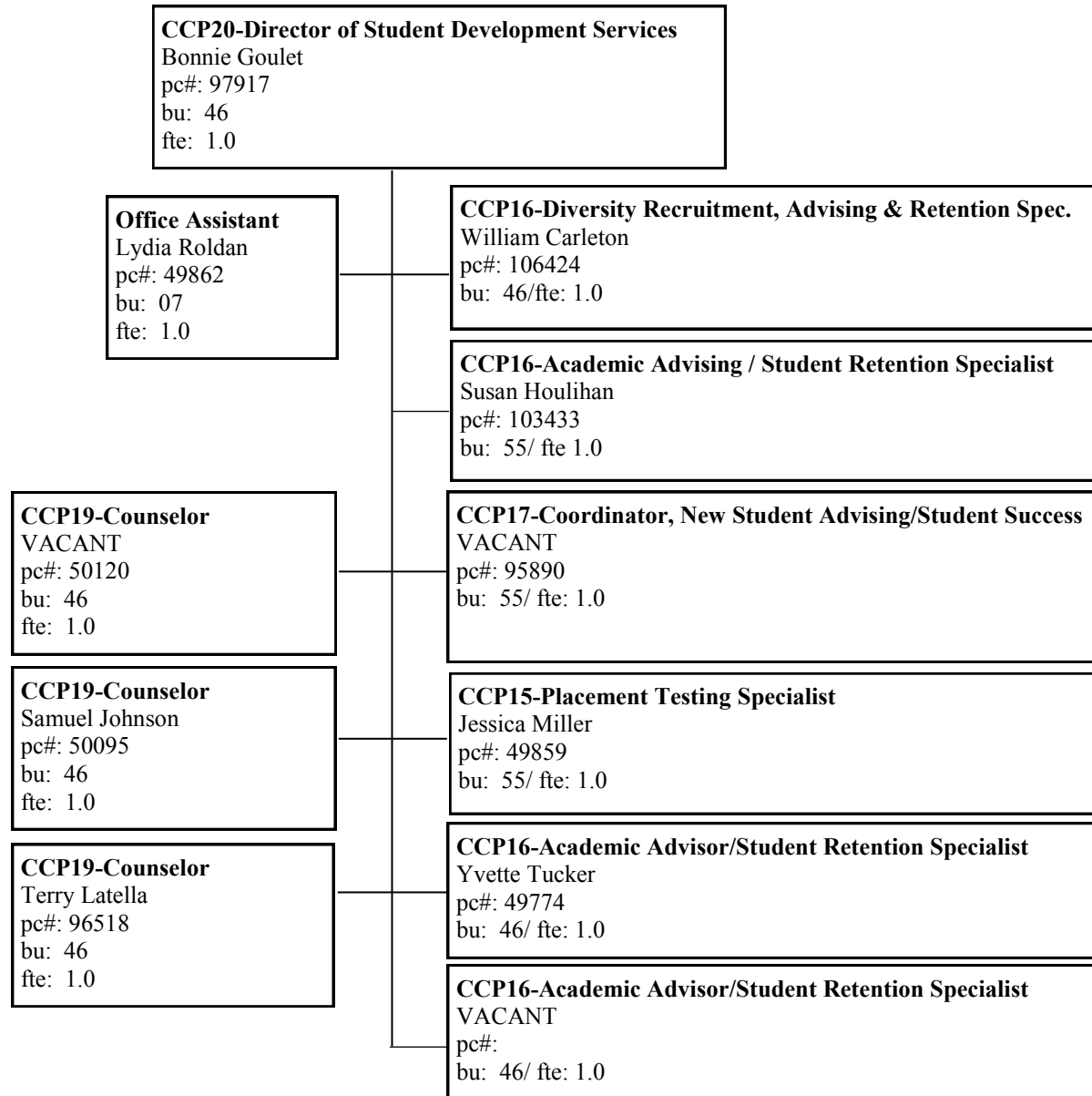
Naugatuck Valley Community College
ORGANIZATIONAL CHART

Admissions - Page 23



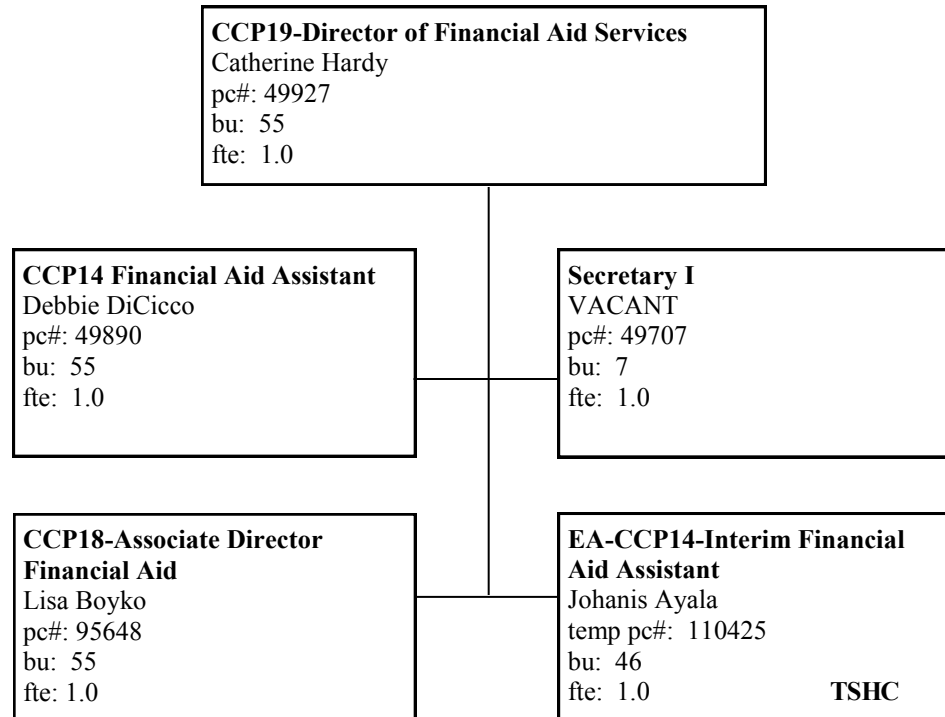
Naugatuck Valley Community College
ORGANIZATIONAL CHART

CAPSS - Page 24



Naugatuck Valley Community College
ORGANIZATIONAL CHART

Financial Aid Services - Page 25



Naugatuck Valley Community College
ORGANIZATIONAL CHART

Human Resources - Page 26

