



Organizational Chart

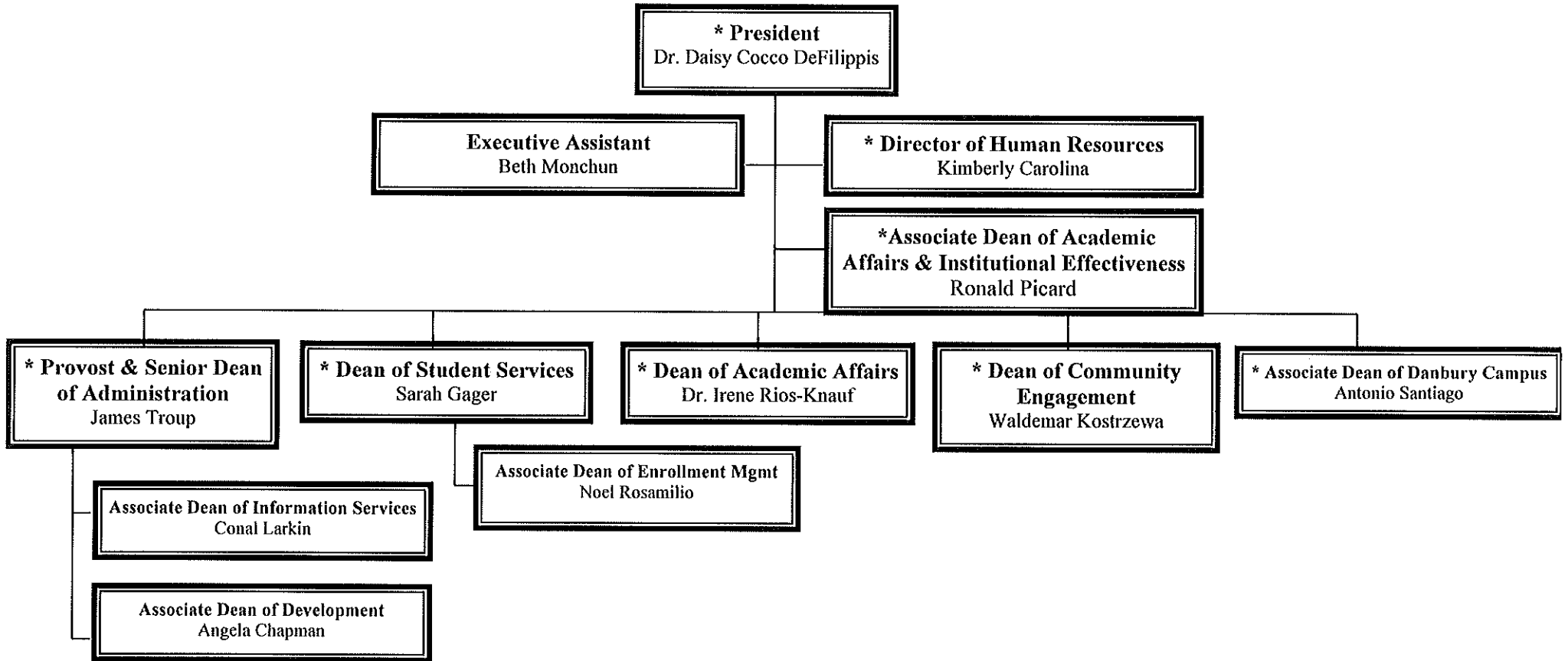
August 2017

NVCC'S ORGANIZATIONAL CHART ALPHABETICAL BY TITLE TABLE OF CONTENTS:

Advanced Manufacturing Technology Center	Page 7
Arts & Humanities Division	Page 18
Associate Dean of Academic Affairs & Institutional Effectiveness	Page 11a
Associate Dean of Development	Page 10
Associate Dean of Enrollment Management	Page 23
Associate Dean of Health Sciences & Director of Nursing	Page 16
Bridge to College Director	Page 12
Behavioral/Social Sciences Division (LABSS)	Page 17
Business Division (includes Fire/AutoTech/Aviation)	Page 14
CAPSS	Page 24
Center for Job Placement & College Opportunities (CJPCO)	Page 9
Community & Economic Development	Page 8
Danbury Campus	Page 21
Dean of Academic Affairs	Page 11
Dean of Students	Page 20
Facilities	Page 5
Finance & Administrative Services	Page 4
Financial Aid Services	Page 25
Human Resources	Page 26
Information Technology	Page 3
Liberal Arts Division (LABSS)	Page 18
Library Services	Page 13
Maintenance Department	Page 5a
Marketing and Public Relations	Page 22
President	Page 1
Provost & Senior Dean of Administration	Page 2
Public Safety	Page 6
Registrar	Page 19
STEM Division	Page 15

Naugatuck Valley Community College
ORGANIZATIONAL CHART

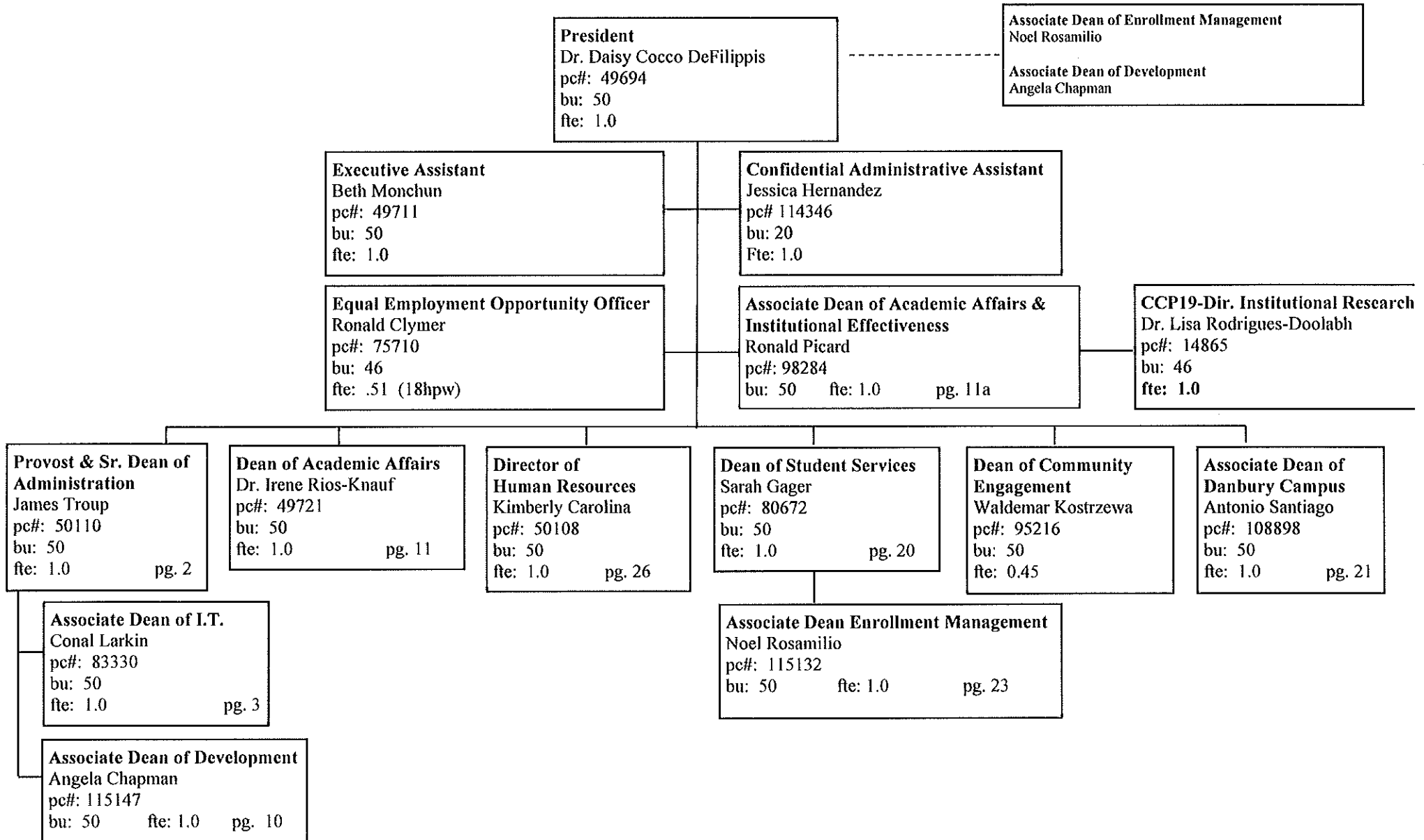
Management Team AND Extended Cabinet Members



* Denotes Policy Team Members

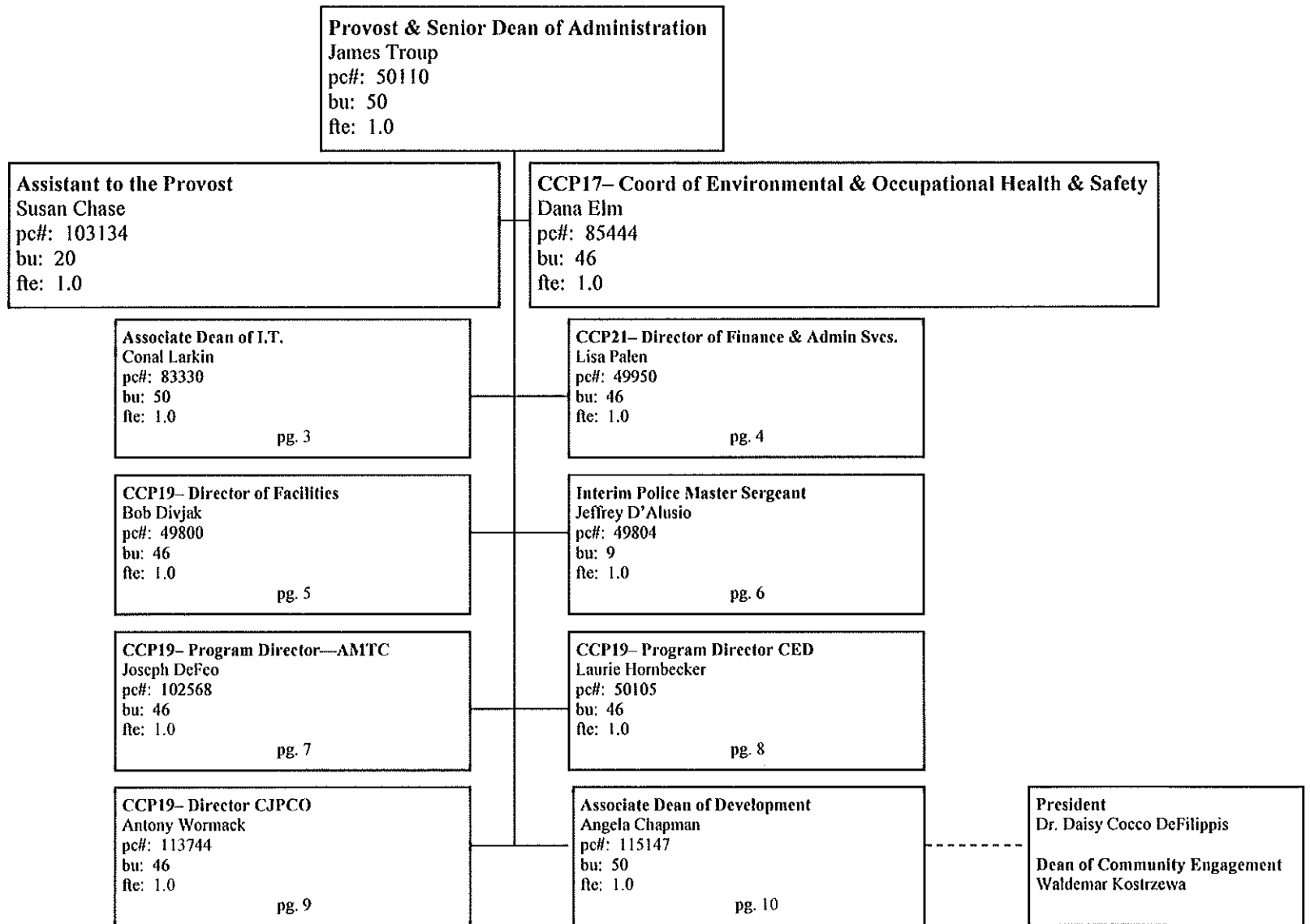
Naugatuck Valley Community College
ORGANIZATIONAL CHART

Office of the President - Page 1



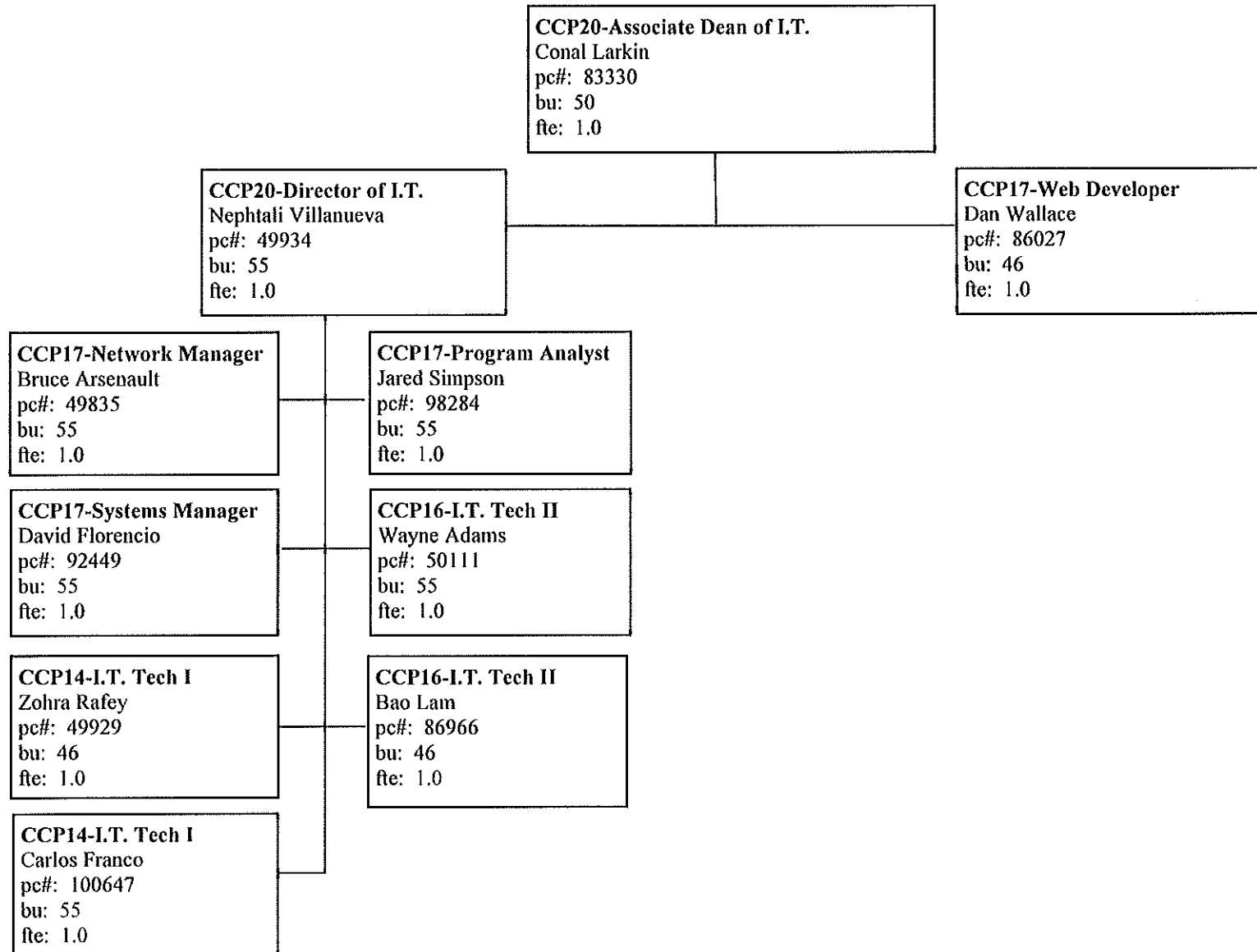
Naugatuck Valley Community College
ORGANIZATIONAL CHART

Provost & Senior Dean of Administration - Page 2



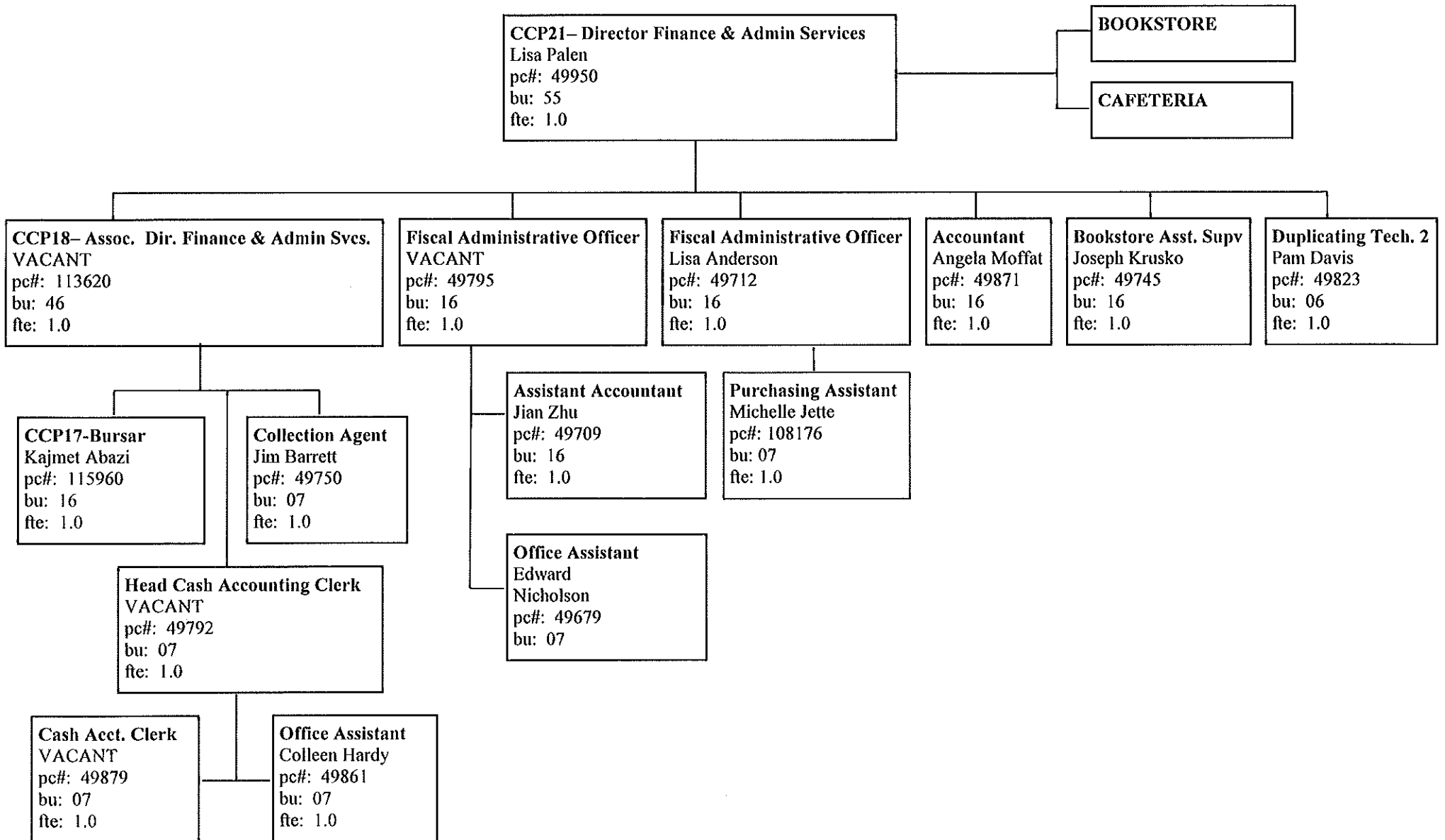
Naugatuck Valley Community College
ORGANIZATIONAL CHART

Information Technology - Page 3



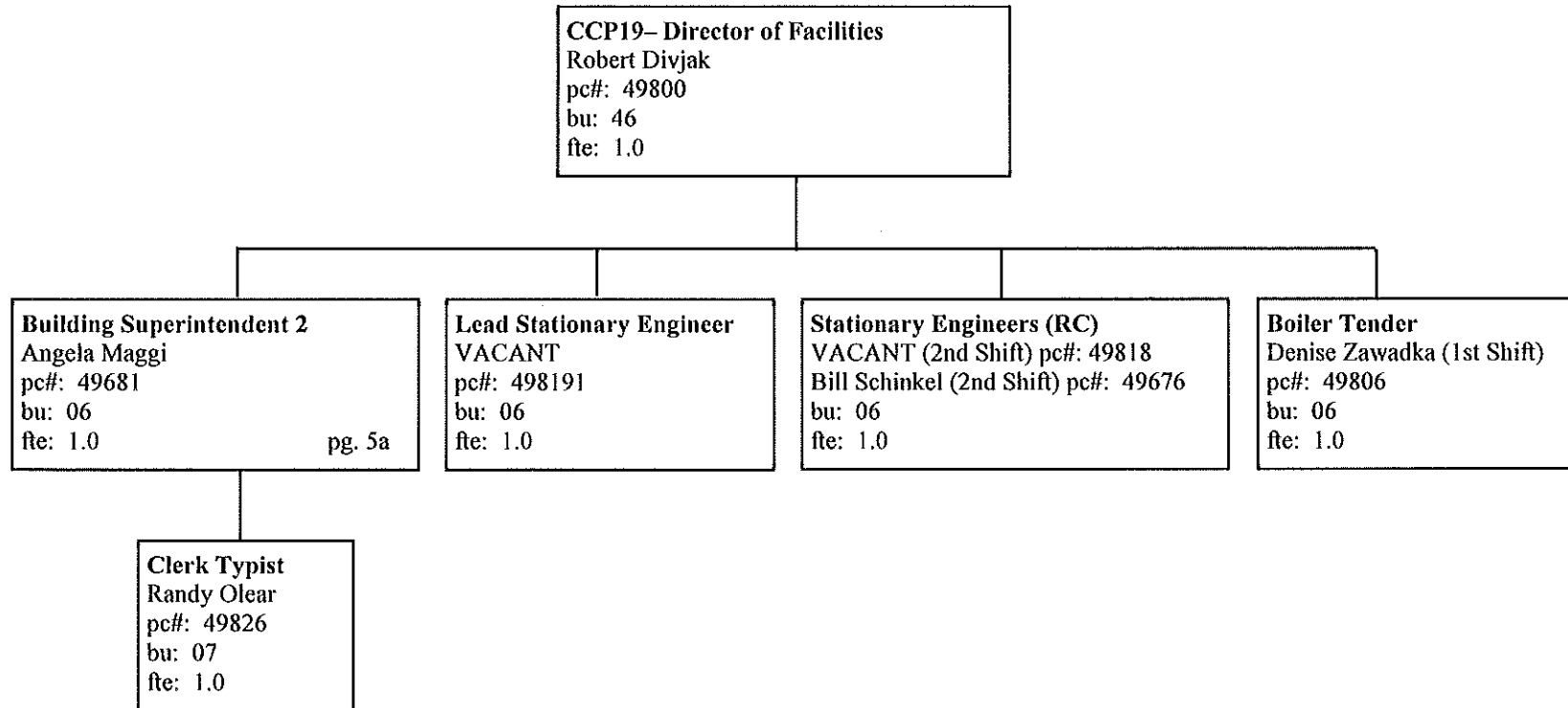
Naugatuck Valley Community College
ORGANIZATIONAL CHART

Director of Finance & Administrative Services - Page 4



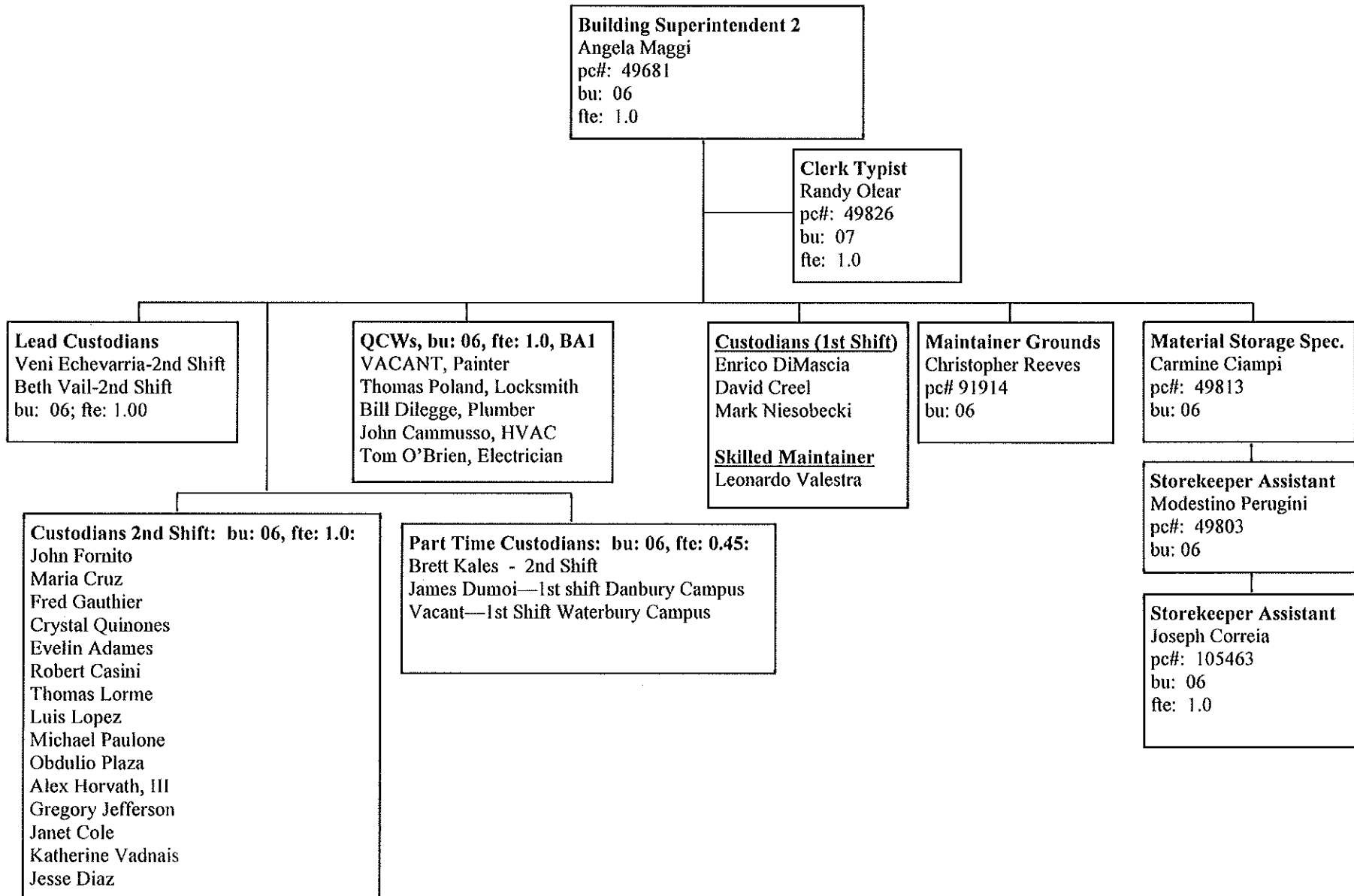
Naugatuck Valley Community College
ORGANIZATIONAL CHART

Facilities Department - Page 5



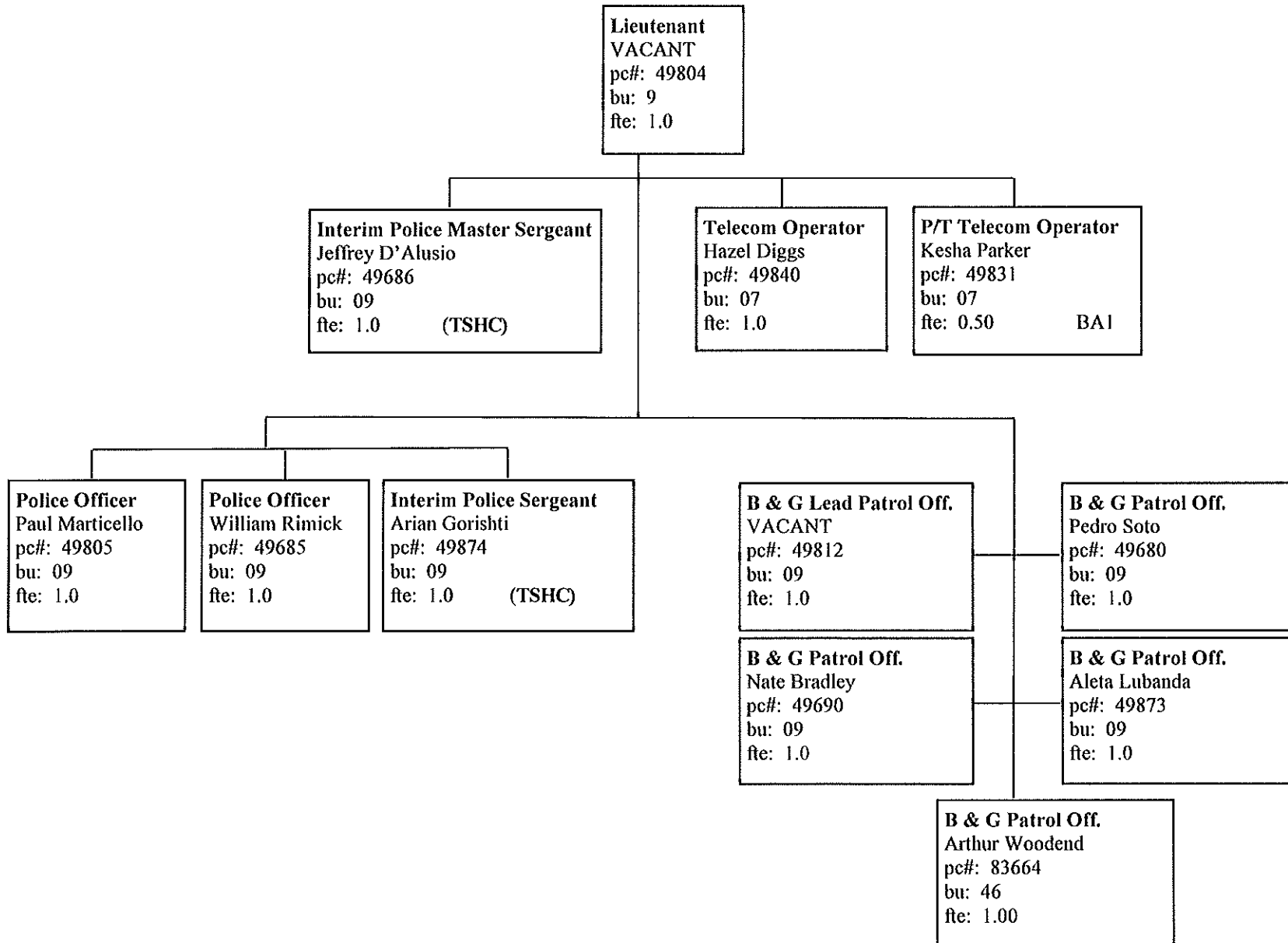
Naugatuck Valley Community College
ORGANIZATIONAL CHART

Maintenance Department - Page 5a



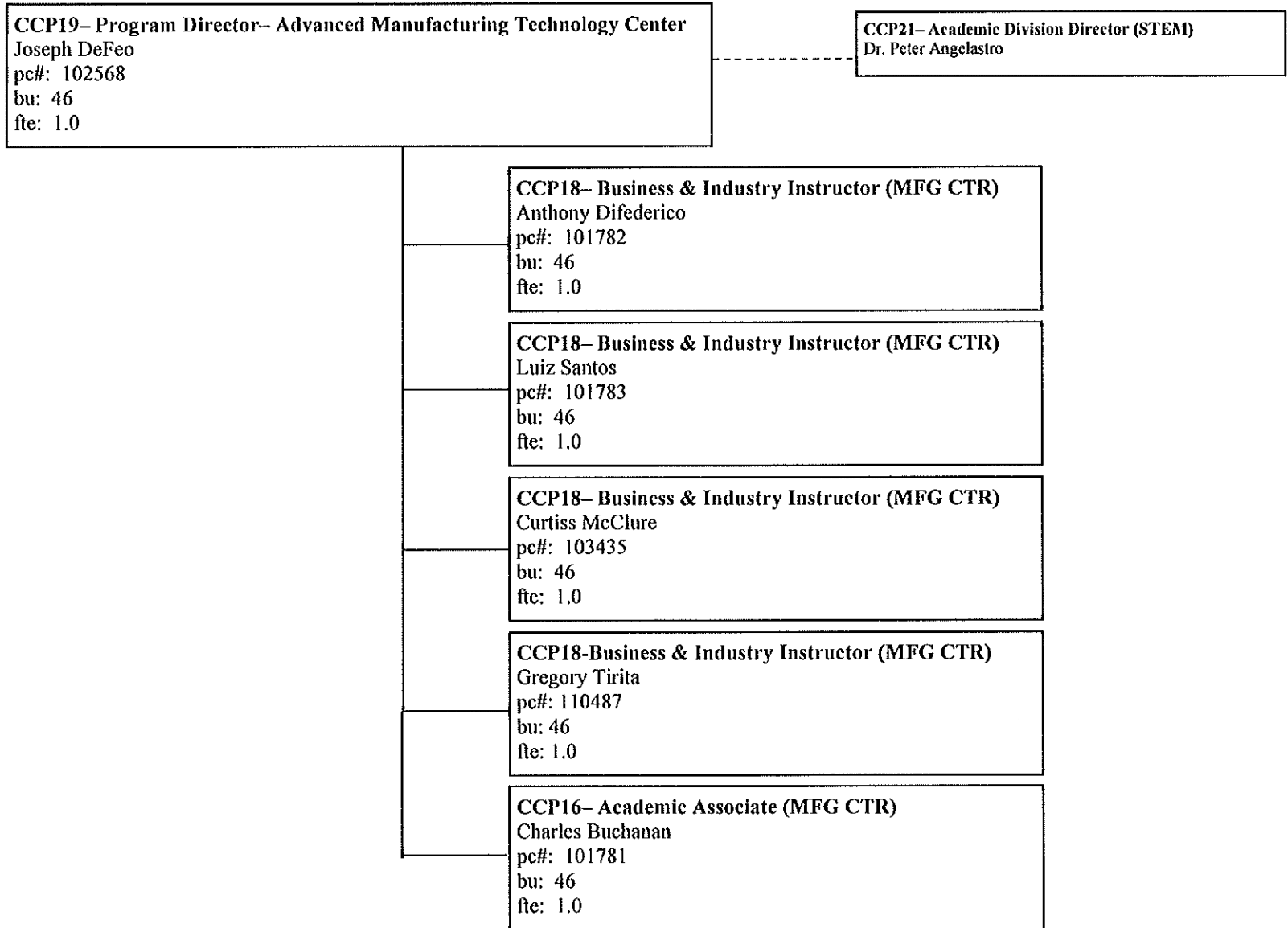
Naugatuck Valley Community College
ORGANIZATIONAL CHART

Public Safety Department - Page 6



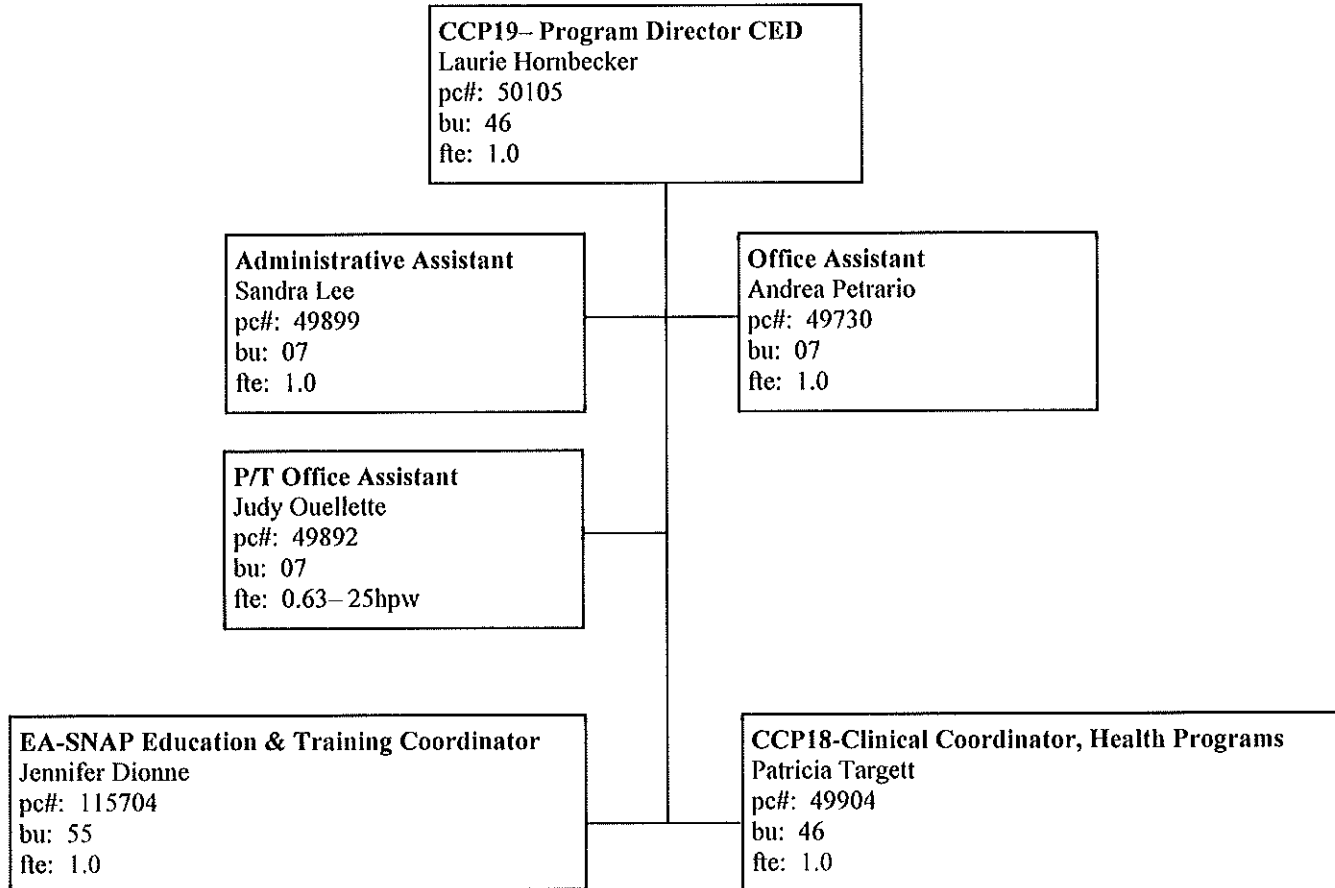
Naugatuck Valley Community College
ORGANIZATIONAL CHART

Advanced Manufacturing Technology Center - Page 7



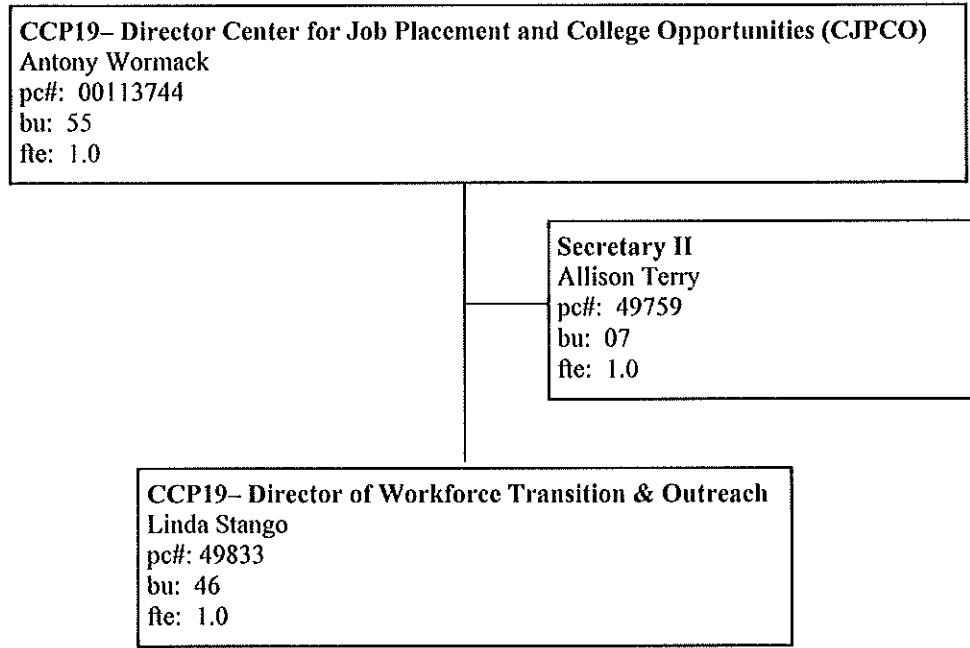
Naugatuck Valley Community College
ORGANIZATIONAL CHART

Community & Economic Development - Page 8



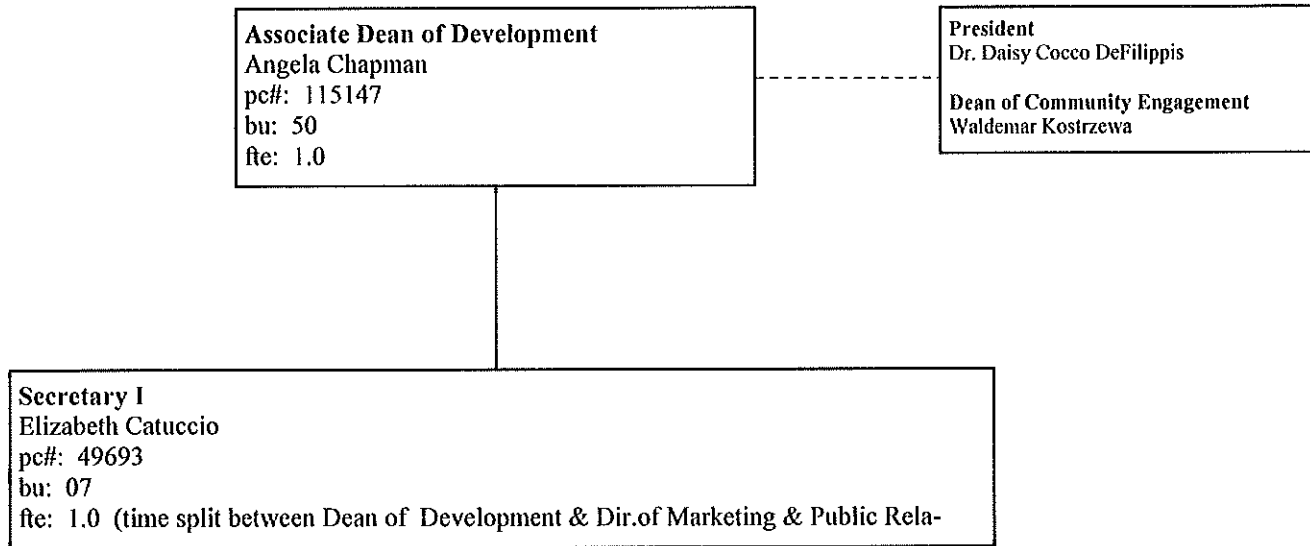
Naugatuck Valley Community College
ORGANIZATIONAL CHART

Center for Job Placement and College Opportunities (CJPCO) - Page 9



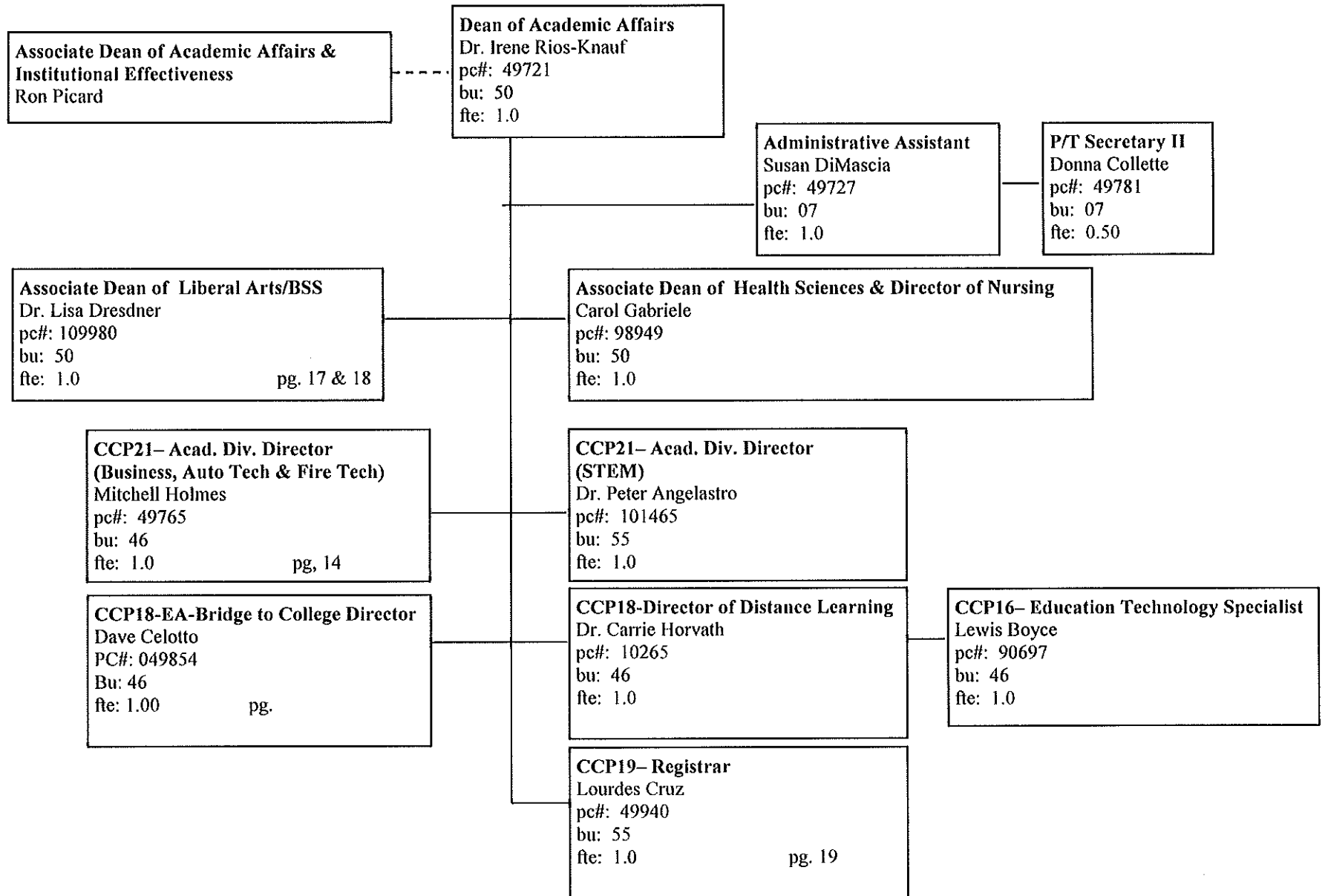
Naugatuck Valley Community College
ORGANIZATIONAL CHART

Development - Page 10



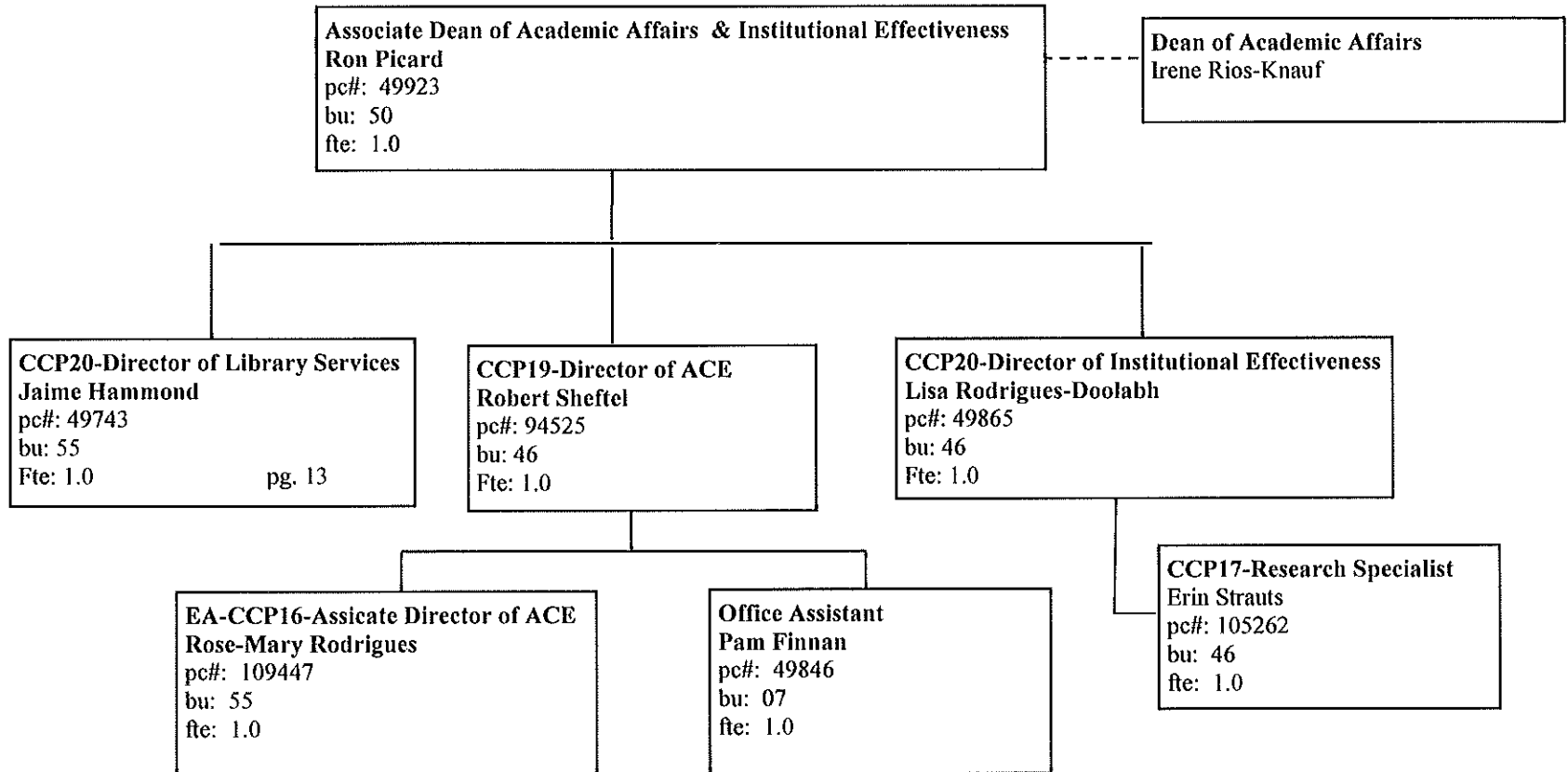
Naugatuck Valley Community College
ORGANIZATIONAL CHART

Dean of Academic Affairs - Page 11



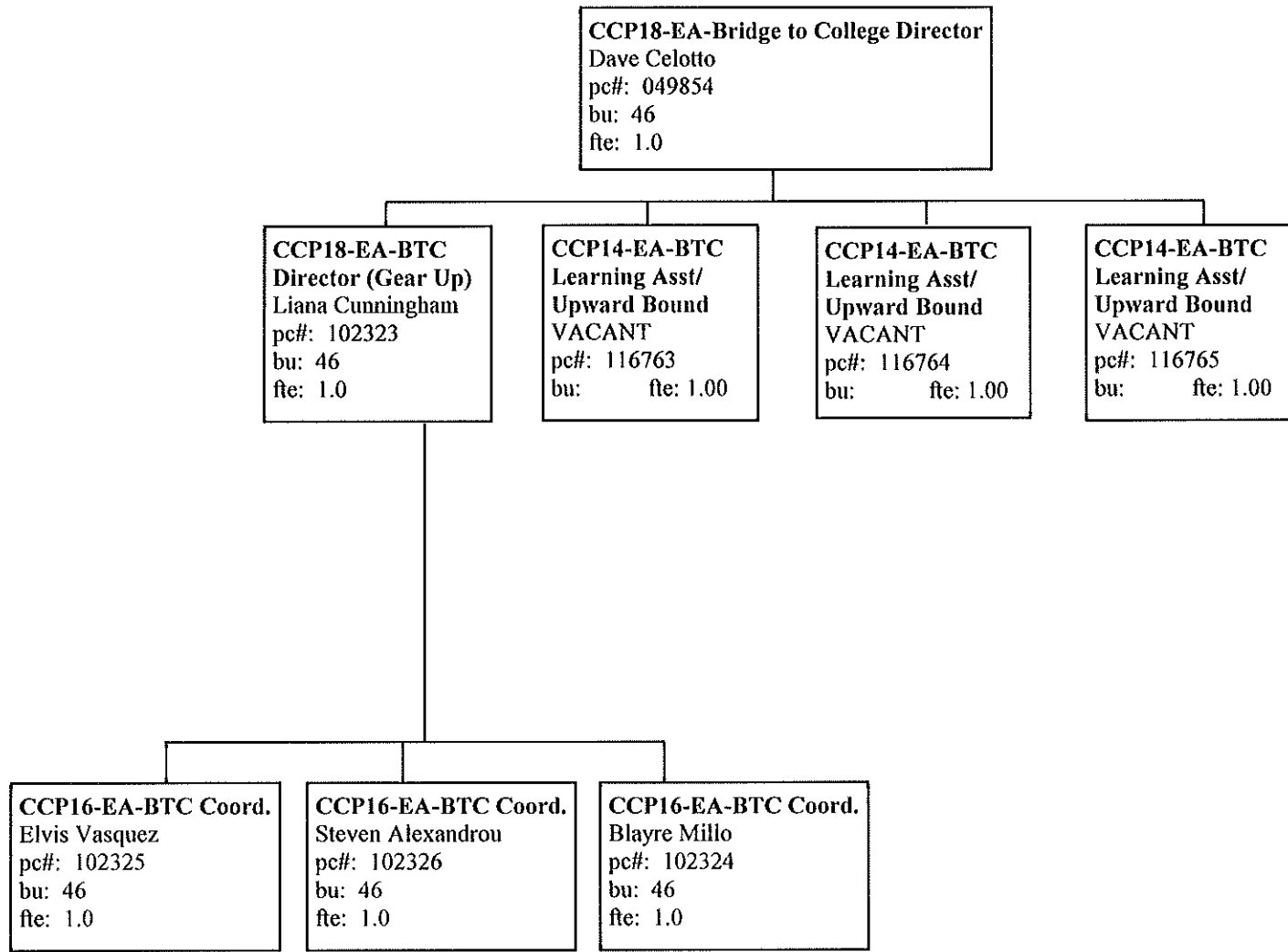
Naugatuck Valley Community College
ORGANIZATIONAL CHART

Associate Dean of Academic Affairs - Page 11a



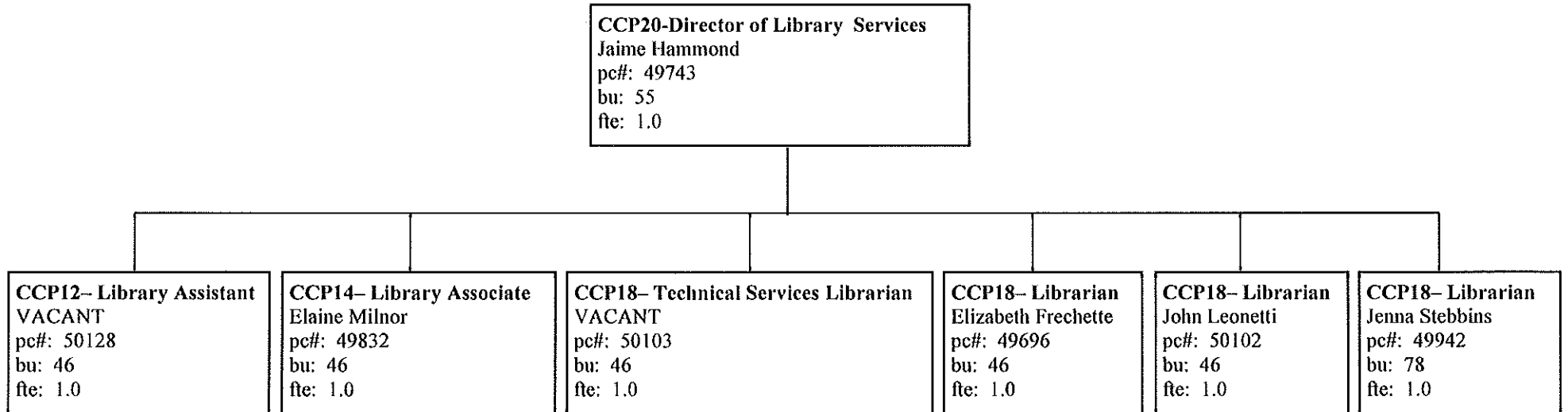
Naugatuck Valley Community College
ORGANIZATIONAL CHART

Bridge to College Director - Page 12



Naugatuck Valley Community College
ORGANIZATIONAL CHART

Library Services - Page 13



Naugatuck Valley Community College
ORGANIZATIONAL CHART

Business/Fire/Auto Tech/Aviation/Hospitality Division - Page 14

CCP21– Academic Division Director (Business/Fire/Auto Tech/Aviation)
Mitchell Holmes
pc#: 49765
bu: 46
fte: 1.0

Secretary II
Louise Bacchiocchi
pc#: 49715
bu: 07
fte: 1.0

EA-CCP16– Assistant Worksite Coordinator/WIA Program
Tracy Mahar
pc#: 85091
bu: 46
fte: 0.86 (30 hpw) Grant Funded—WIA

David Clough, Program Coordinator
Legal Assistant/Paralegal

Sandra Eddy, Department Chair
CIS

Michael Labet, Program Coordinator
Accounting

Donna Marotti, Program Coordinator
Economics/Finance

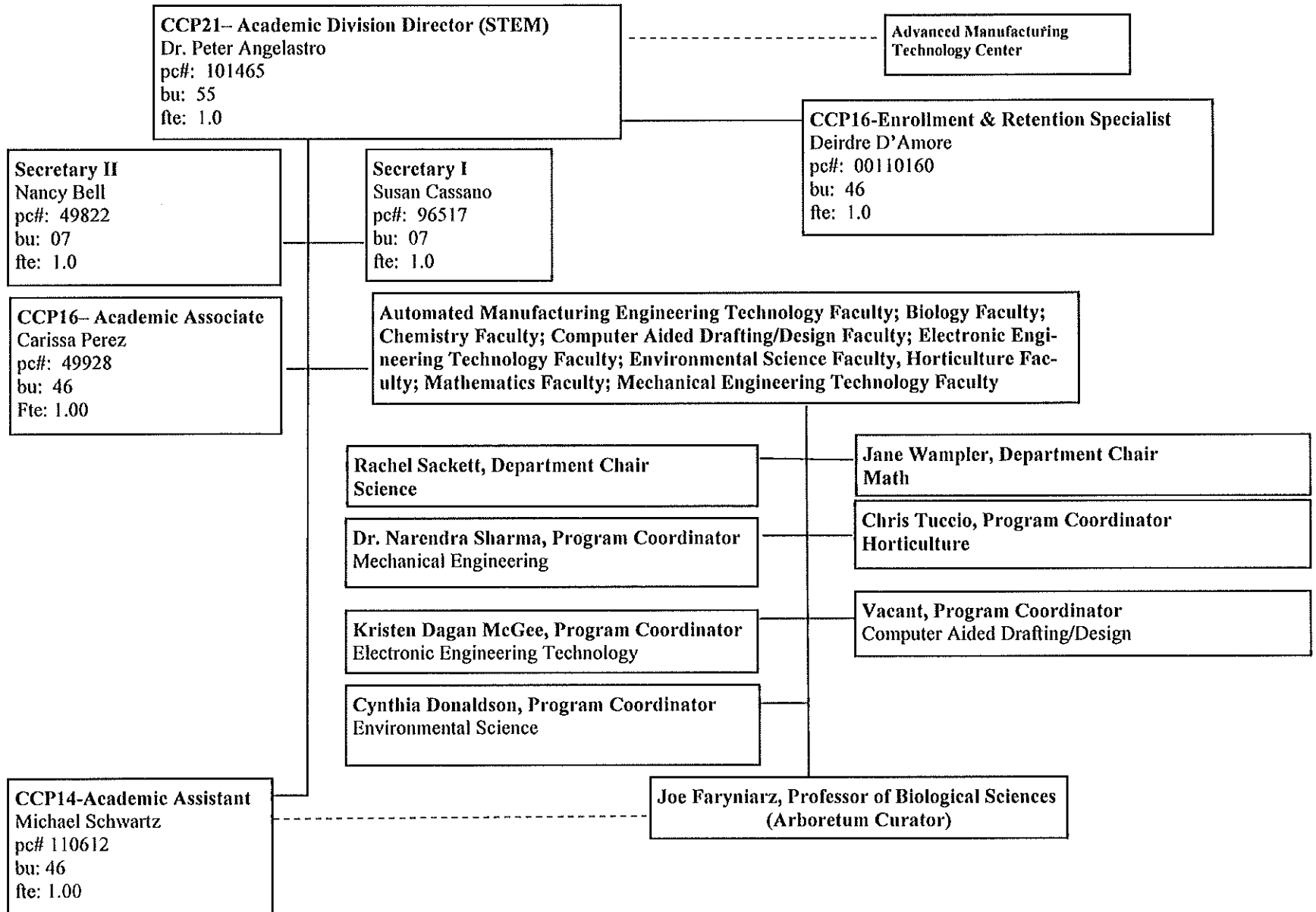
Karen Rotella, Program Coordinator
Hospitality Management

Mark Schnubel, Program Coordinator
Automotive

BUSINESS DIVISION FACULTY
Management, CIS, LAP, Finance,
Business Computer Applications, Accounting,
Fire Technology, Automotive Technician, Marketing
Management, Hospitality

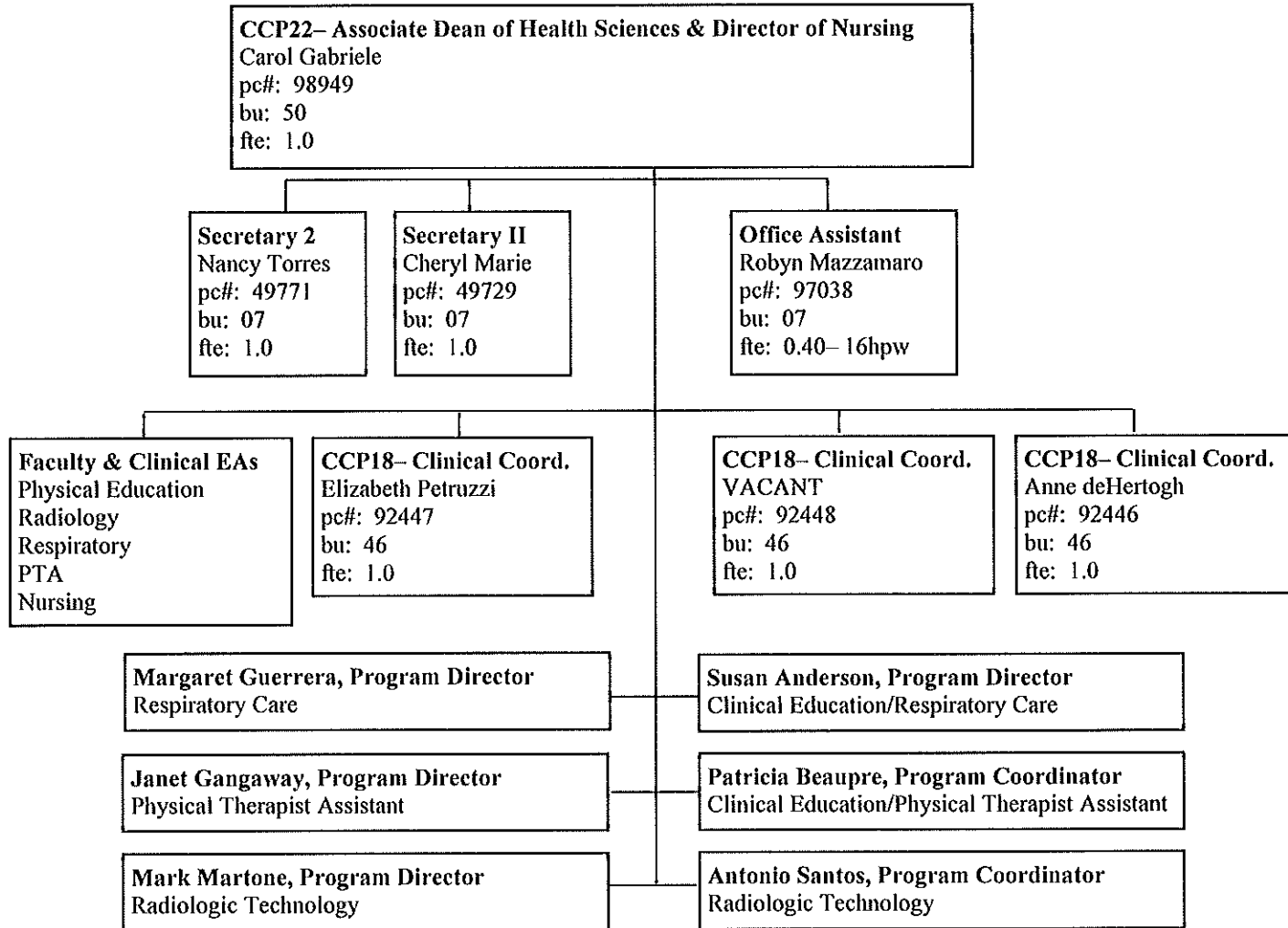
Naugatuck Valley Community College
ORGANIZATIONAL CHART

STEM Division - Page 15



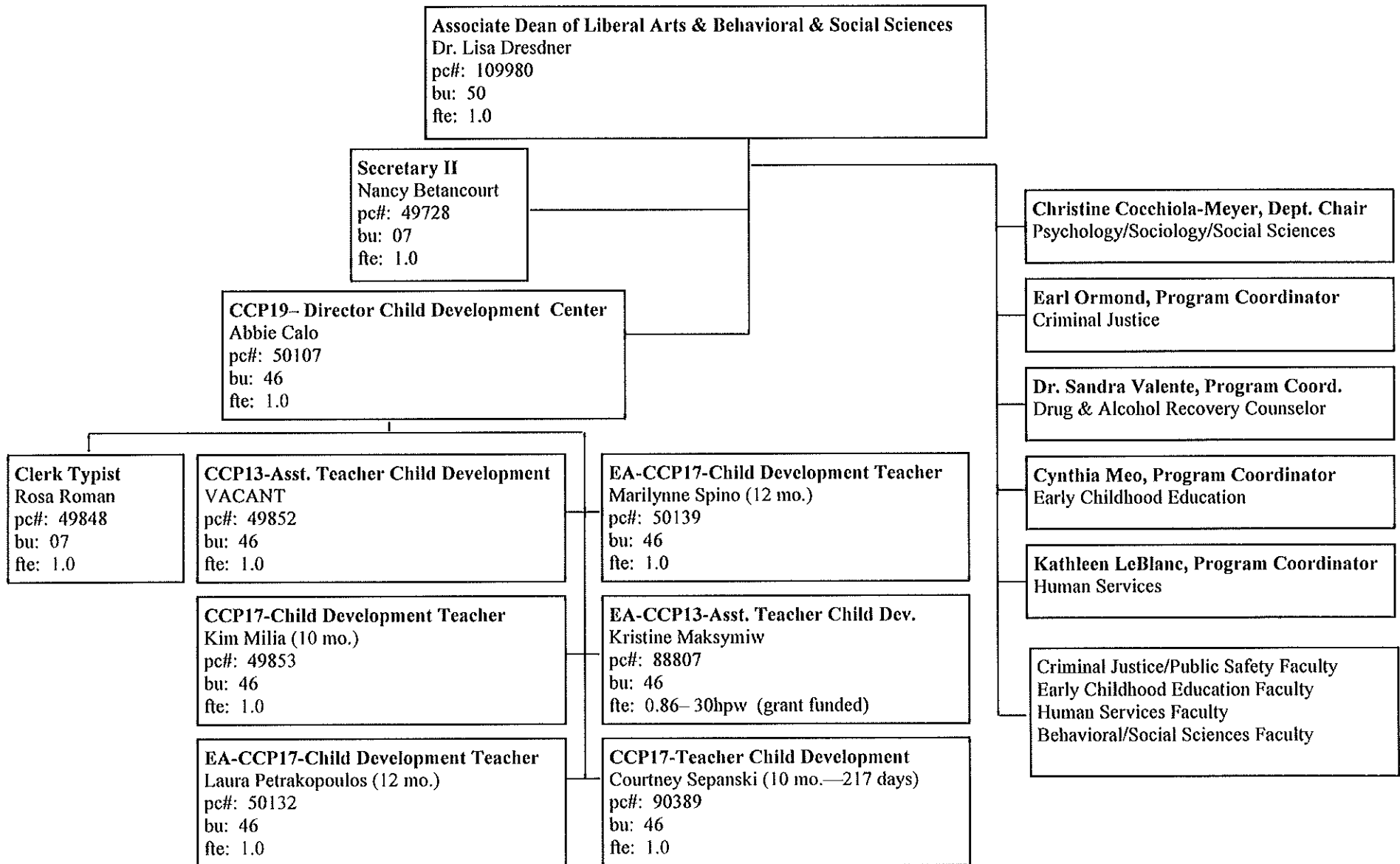
Naugatuck Valley Community College
ORGANIZATIONAL CHART

Associate Dean of Health Sciences & Director of Nursing - Page 16



Naugatuck Valley Community College
ORGANIZATIONAL CHART

Behavioral & Social Sciences Division - Page 17



Naugatuck Valley Community College
ORGANIZATIONAL CHART

Liberal Arts Division - Page 18

Associate Dean of Liberal Arts & Behavioral /Social Sciences
Dr. Lisa Dresdner
pc#: 109980
bu: 50
fte: 1.0

Secretary 1
Elizabeth Hoblack
pc#: 49872
bu: 07
fte: 1.0

CCP18-ESL Program Director
Karlene Ball
pc#: 49941
bu: 46
fte: 1.0

CCP18-Technical Coord. Fine Arts Center Theater
Jonathan Curns
pc#: 49858
bu: 1.0
fte: 1.0

Julia Petitfrere, Department Chair
Developmental English/Communications

Patricia Pallis, Department Chair
Humanities

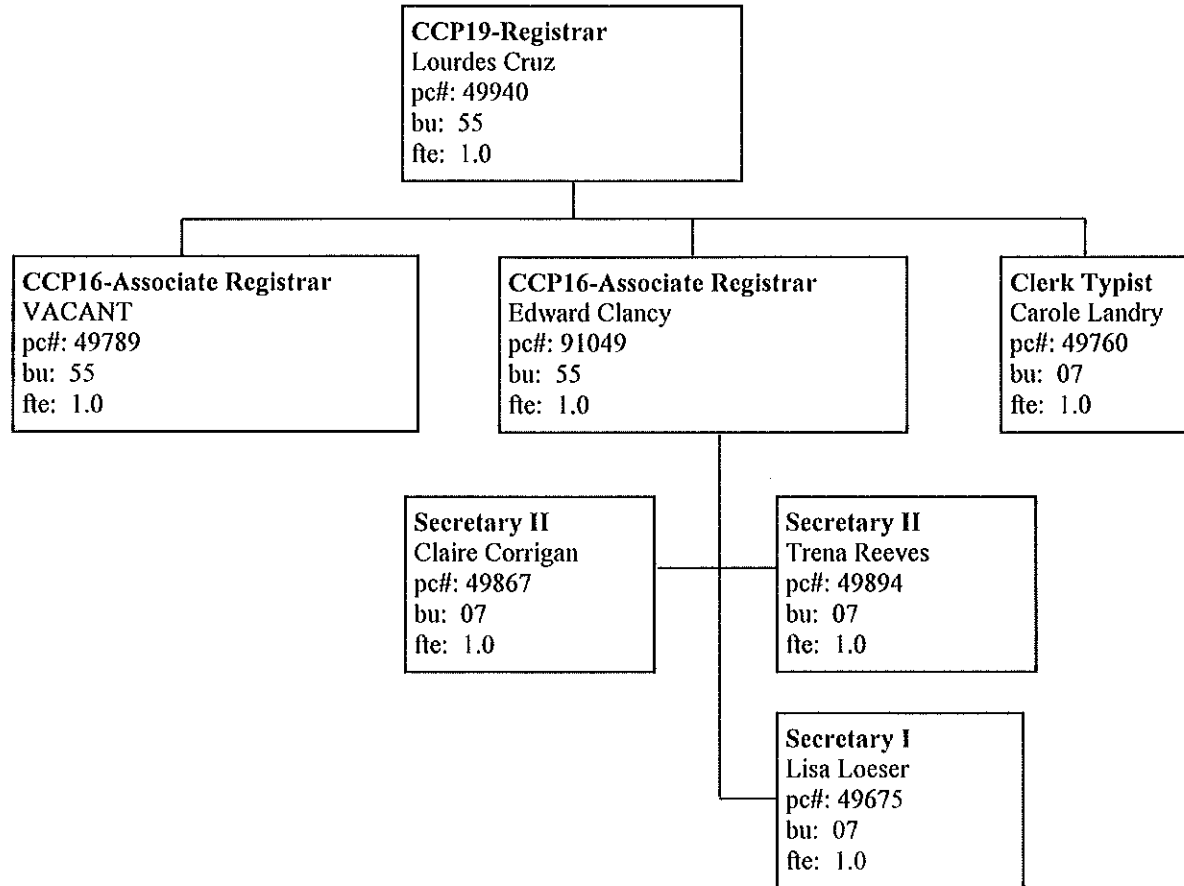
Department Chair - VACANT
The Arts

Ray Leite, Program Coordinator
DAT

Dance Faculty, Art Faculty,
English/Speech Faculty, Modern
Language Faculty, Music Faculty,
Drama Faculty, Philosophy Faculty,
Humanities Faculty

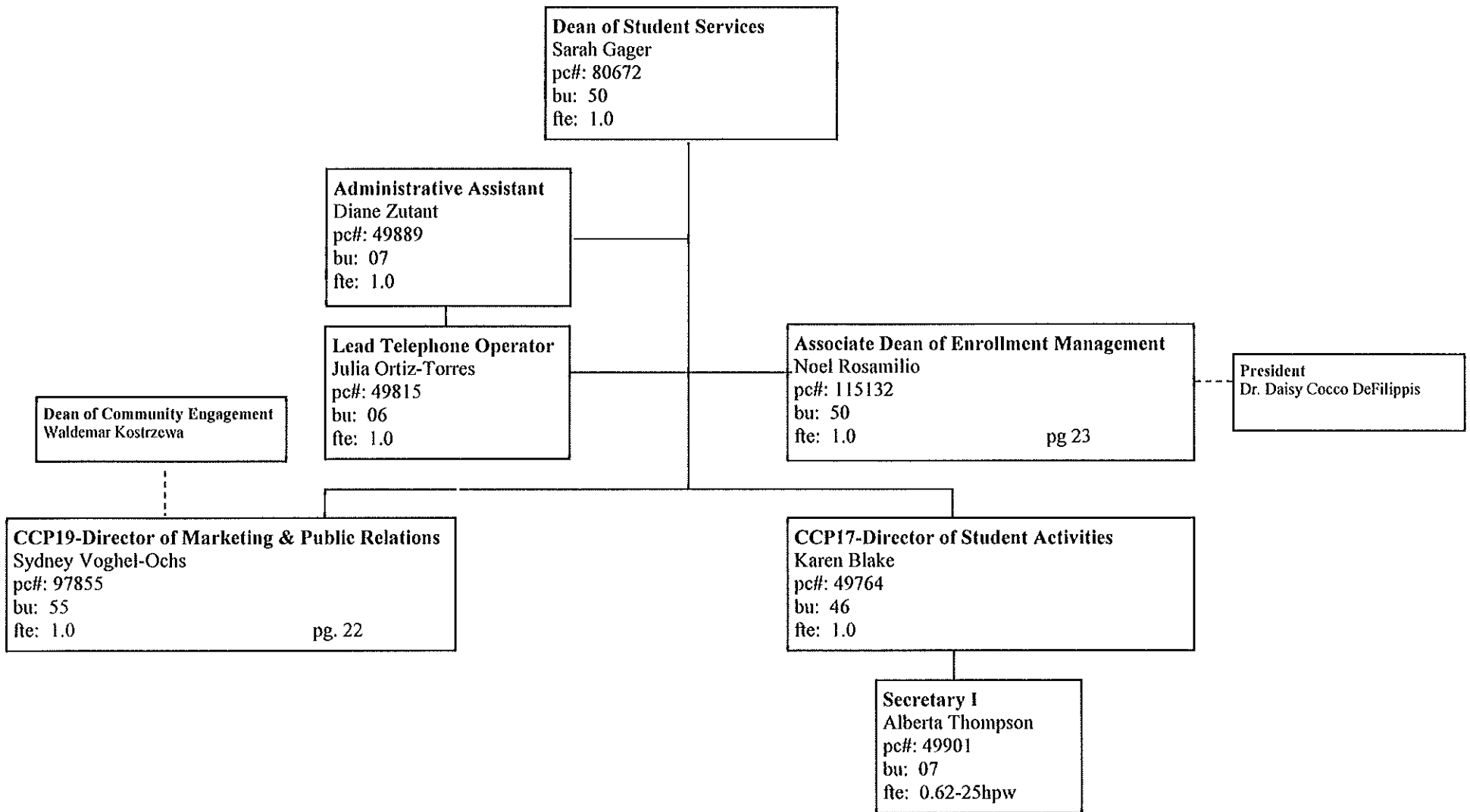
Naugatuck Valley Community College
ORGANIZATIONAL CHART

Office of the Registrar - Page 19



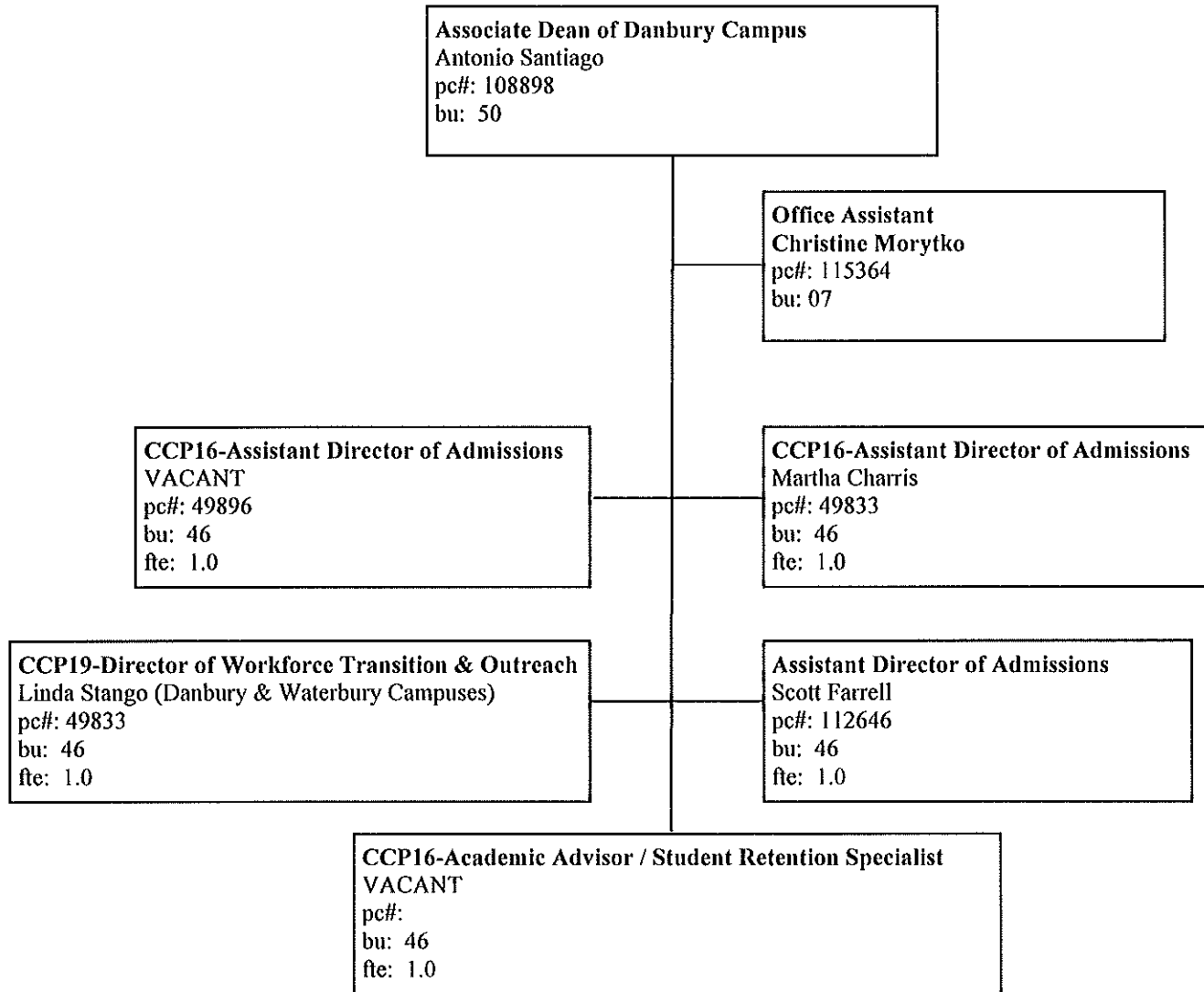
Naugatuck Valley Community College
ORGANIZATIONAL CHART

Dean of Students - Page 20



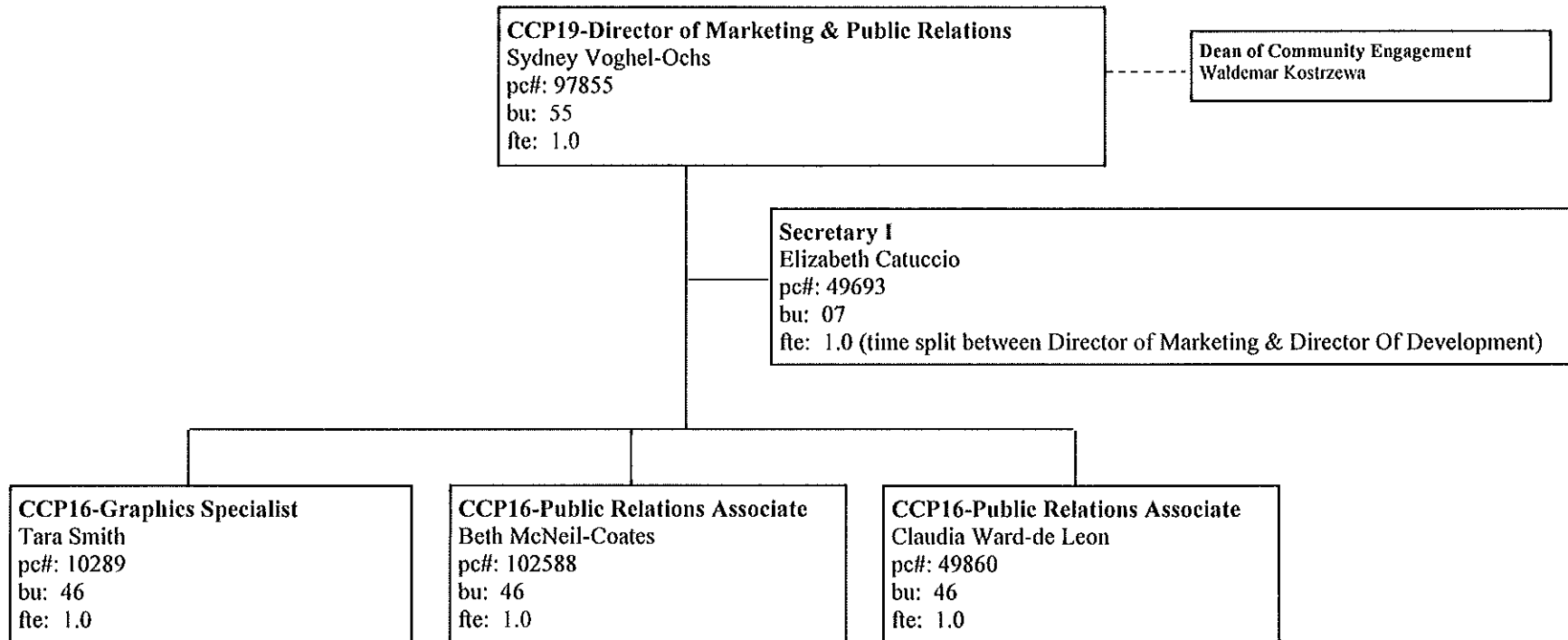
Naugatuck Valley Community College
ORGANIZATIONAL CHART

Danbury Campus - Page 21



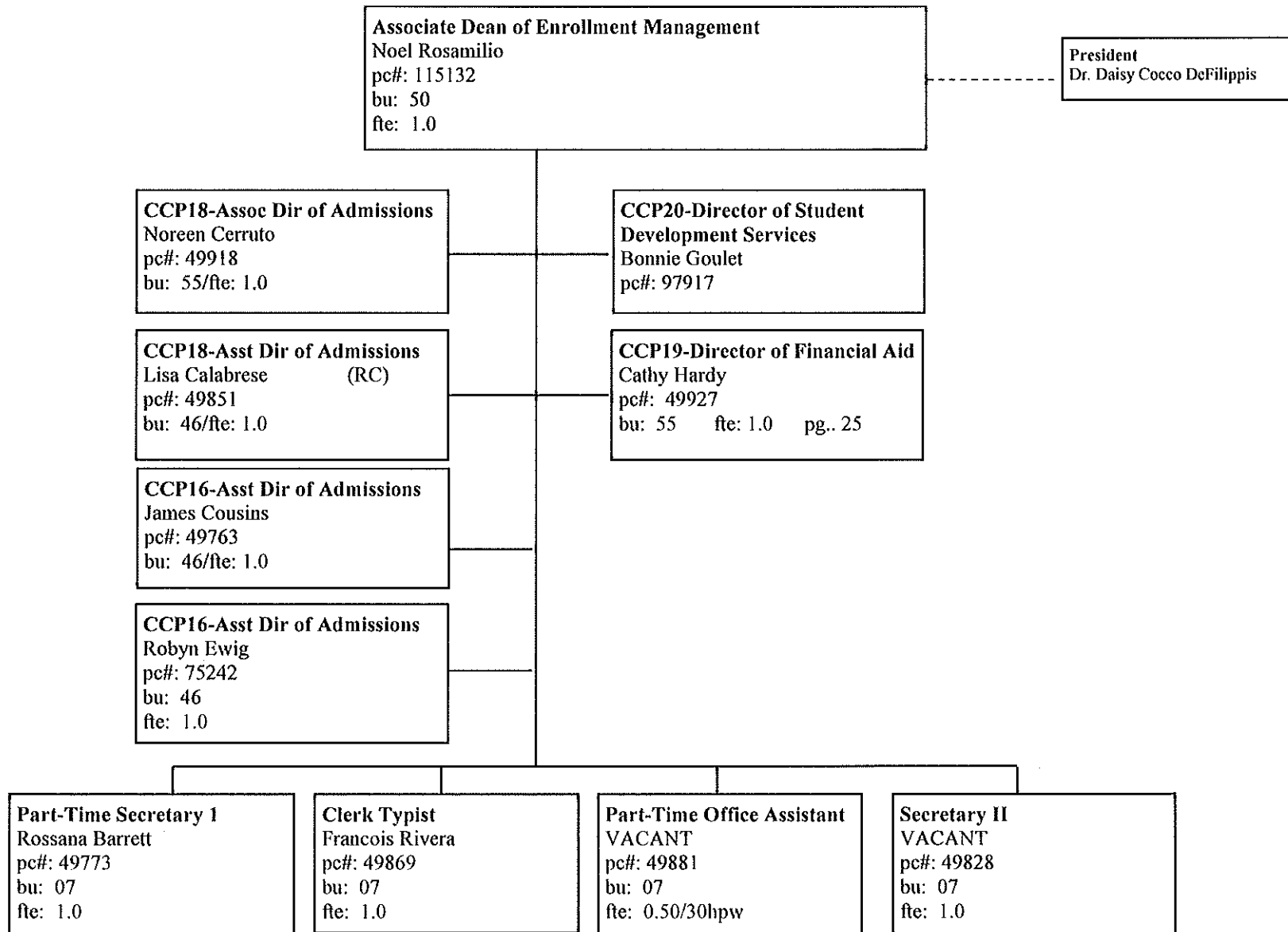
Naugatuck Valley Community College
ORGANIZATIONAL CHART

Marketing & Public Relations - Page 22



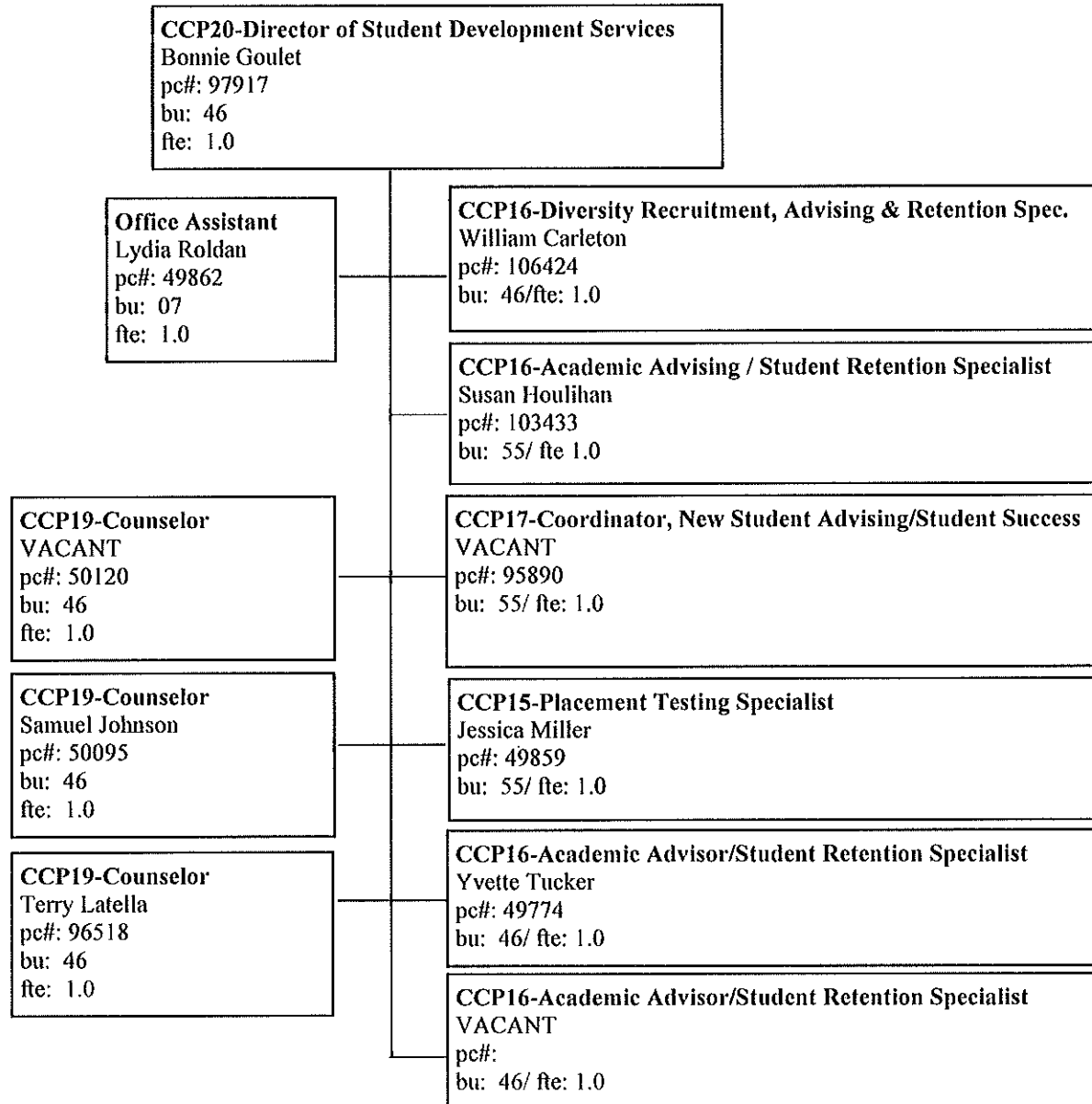
Naugatuck Valley Community College
ORGANIZATIONAL CHART

Admissions - Page 23



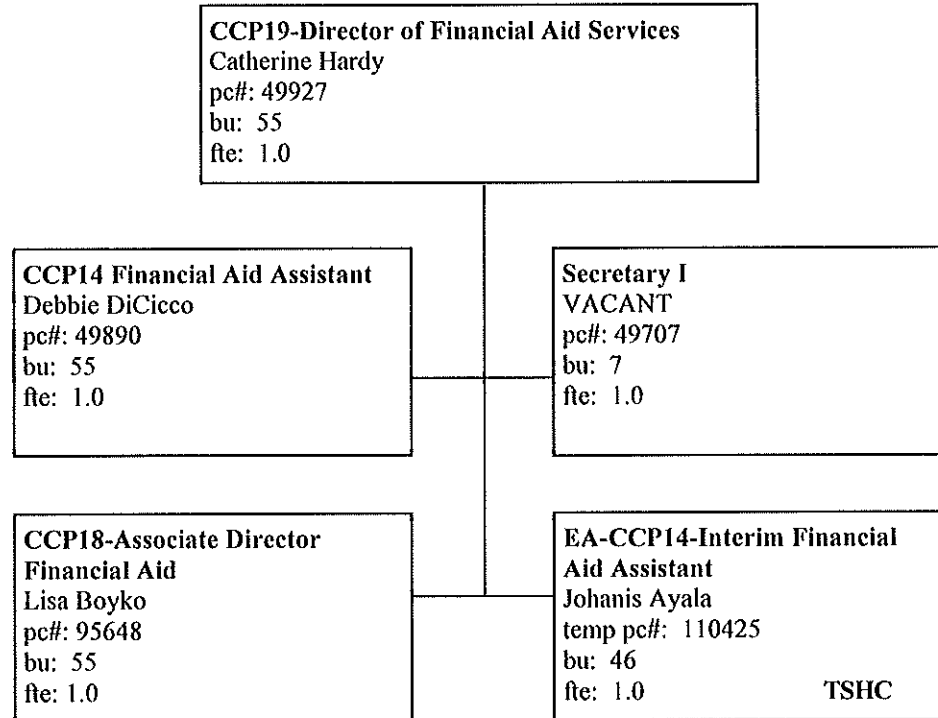
Naugatuck Valley Community College
ORGANIZATIONAL CHART

CAPSS - Page 24



Naugatuck Valley Community College
ORGANIZATIONAL CHART

Financial Aid Services - Page 25



Naugatuck Valley Community College
ORGANIZATIONAL CHART

Human Resources - Page 26

