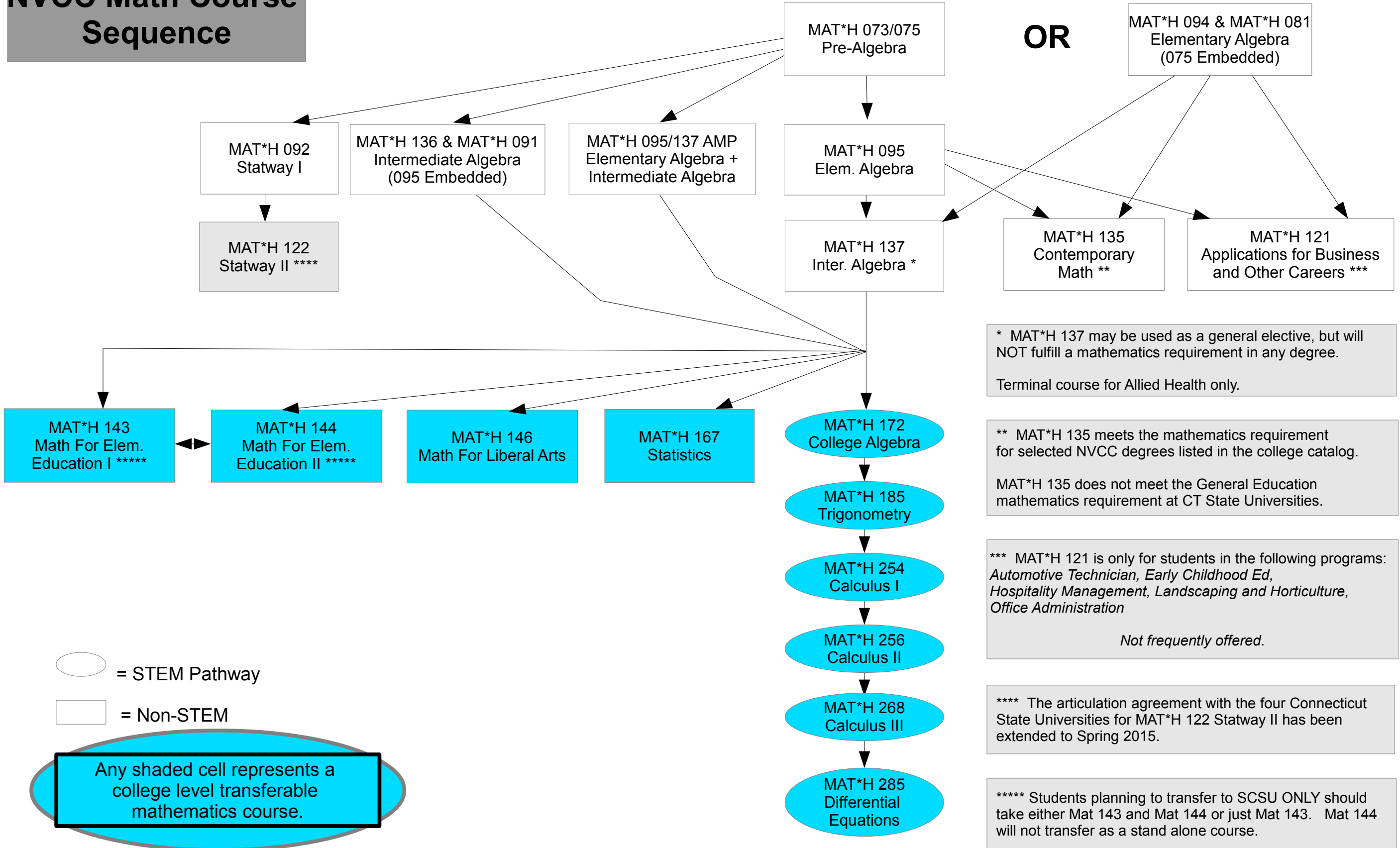


# NVCC Math Course Sequence



**OR**

MAT\*H 094 & MAT\*H 081  
Elementary Algebra  
(075 Embedded)

\* MAT\*H 137 may be used as a general elective, but will NOT fulfill a mathematics requirement in any degree.  
Terminal course for Allied Health only.

\*\* MAT\*H 135 meets the mathematics requirement for selected NVCC degrees listed in the college catalog.  
MAT\*H 135 does not meet the General Education mathematics requirement at CT State Universities.

\*\*\* MAT\*H 121 is only for students in the following programs: *Automotive Technician, Early Childhood Ed, Hospitality Management, Landscaping and Horticulture, Office Administration*  
*Not frequently offered.*

\*\*\*\* The articulation agreement with the four Connecticut State Universities for MAT\*H 122 Statway II has been extended to Spring 2015.

\*\*\*\*\* Students planning to transfer to SCSU ONLY should take either Mat 143 and Mat 144 or just Mat 143. Mat 144 will not transfer as a stand alone course.

○ = STEM Pathway  
□ = Non-STEM

Any shaded cell represents a college level transferable mathematics course.