



Organizational Chart

August 2020

**NVCC'S ORGANIZATIONAL CHART TABLE OF CONTENTS
(IN ORDER BY DEAN TITLE AND DEPARTMENTS)**

Advanced Manufacturing Technology Center	Page 8
Associate Dean of Business & Professional Program Division (includes Fire/AutoTech/Aviation)	Page 15
Associate Dean of Development	Page 11
Associate Dean of Enrollment Management	Page 23
Associate Dean of Health Sciences & Director of Nursing	Page 17
Associate Dean of Liberal Arts & Behavioral & Social Sciences (LABSS)	Page 18
Associate Dean of Science, Technology, Engineering & Mathematics (STEM)	Page 16
Bridge To College	Page 13
Center for Academic Planning & Student Success (CAPSS)	Page 24
Center for Job Placement & College Opportunities (CJPCO)	Page 10
CEO	Page 1
Community & Economic Development (CED)	Page 9
Dean of Academic Affairs	Page 12
Dean of Administration	Page 2
Dean of Danbury Campus	Page 21
Dean of Students	Page 20
Facilities	Page 5
Finance & Administrative Services	Page 4
Financial Aid Services	Page 25
Information Technology	Page 3
Institutional Research and Effectiveness	Page 26
Library Services	Page 14
Maintenance Department	Page 6
Marketing and Public Relations	Page 22
Public Safety	Page 7
Registrar	Page 19

Naugatuck Valley Community College
ORGANIZATIONAL CHART

Management Team

*** Interim CEO**
Lisa Dresdner, Ph.D

***Executive Assistant**
Beth Monchun

***Associate Dean of Development**
Angela Chapman

**Interim Director of Institutional
Research & Effectiveness**
Sohair Omar
pc#: 105262
bu: 46 fte: 1.0

*** Interim Dean
of Administration**
Dana Elm

*** Dean of Student Services**
Sarah Gager

***Interim Dean of Academic
Affairs—Justin Moore**

*** Dean of Community
Engagement-p/t**
Waldemar Kostrzewa

*** Dean of Danbury Campus**
Antonio Santiago

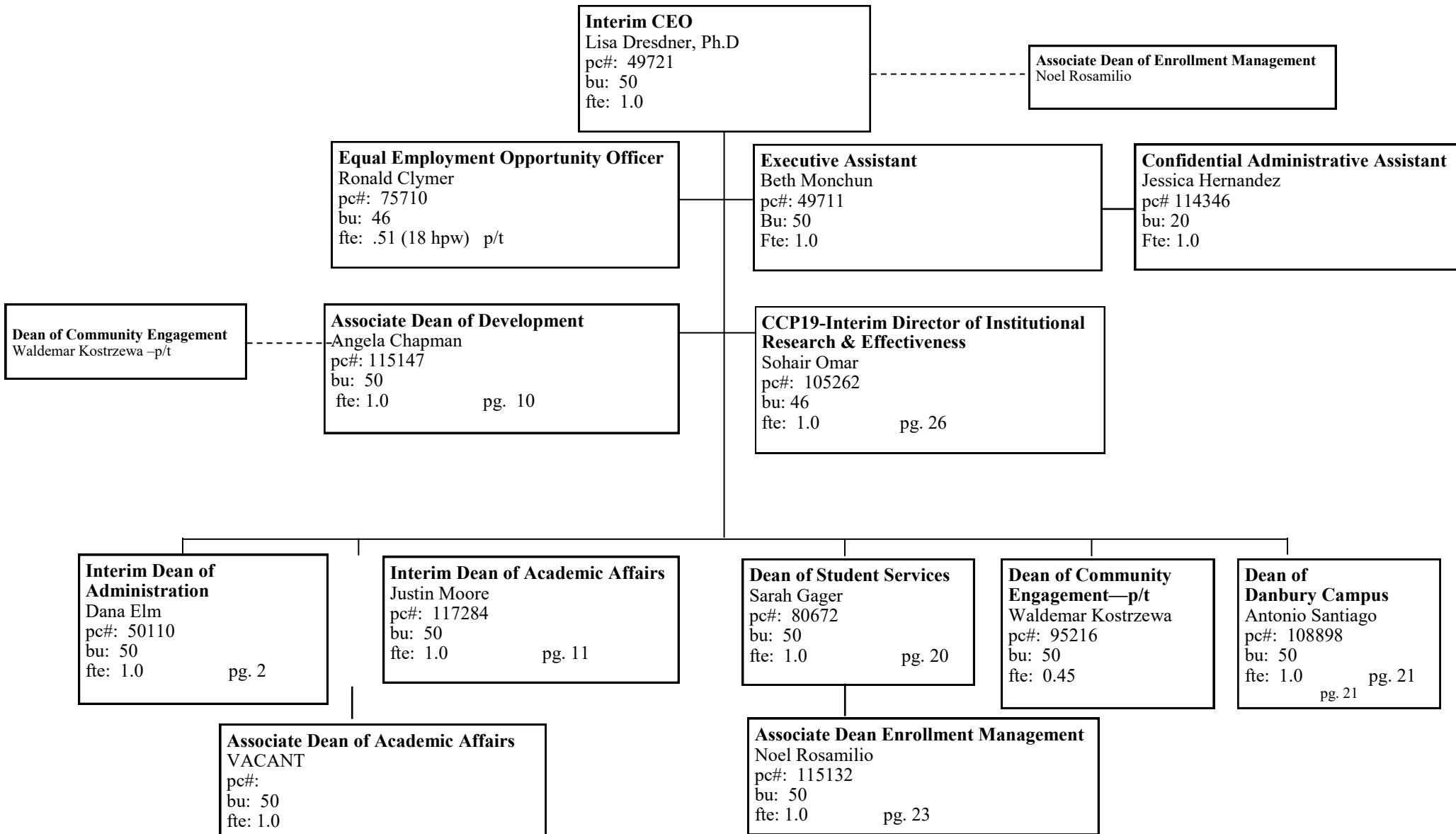
Associate Dean of Enrollment Mgmt
Noel Rosamilio

Associate Dean of Academic Affairs
VACANT

* Denotes Policy Cabinet Members

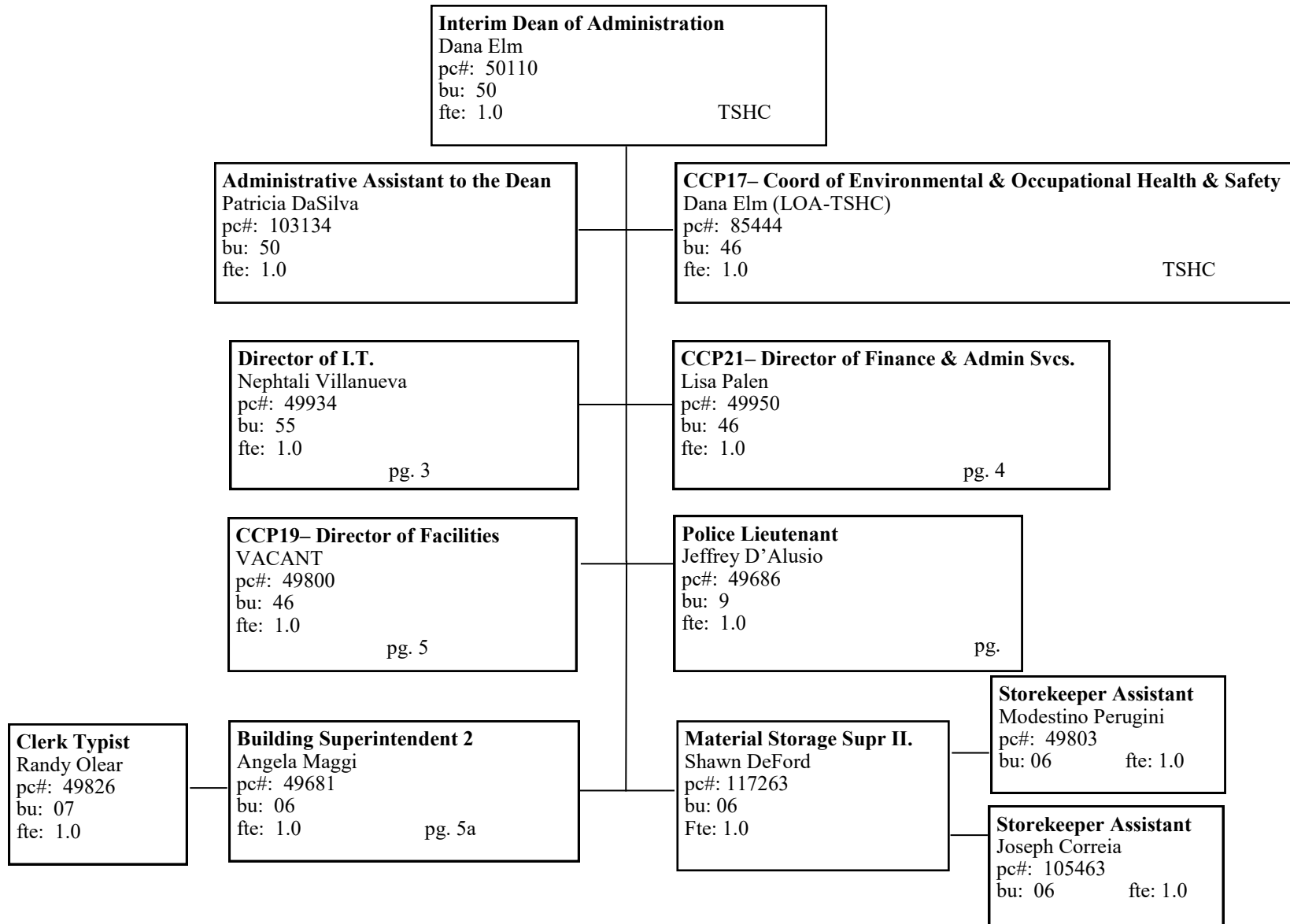
Naugatuck Valley Community College
ORGANIZATIONAL CHART

Office of the CEO - Page 1



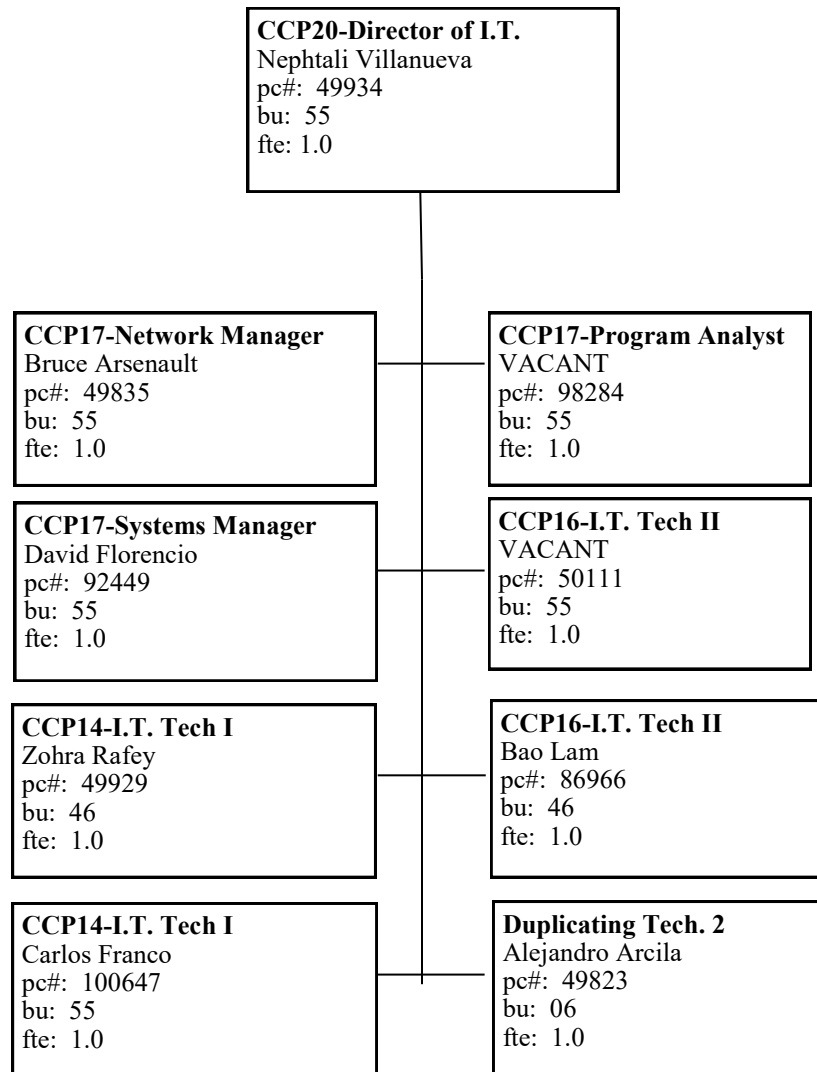
Naugatuck Valley Community College
ORGANIZATIONAL CHART

Dean of Administration - Page 2



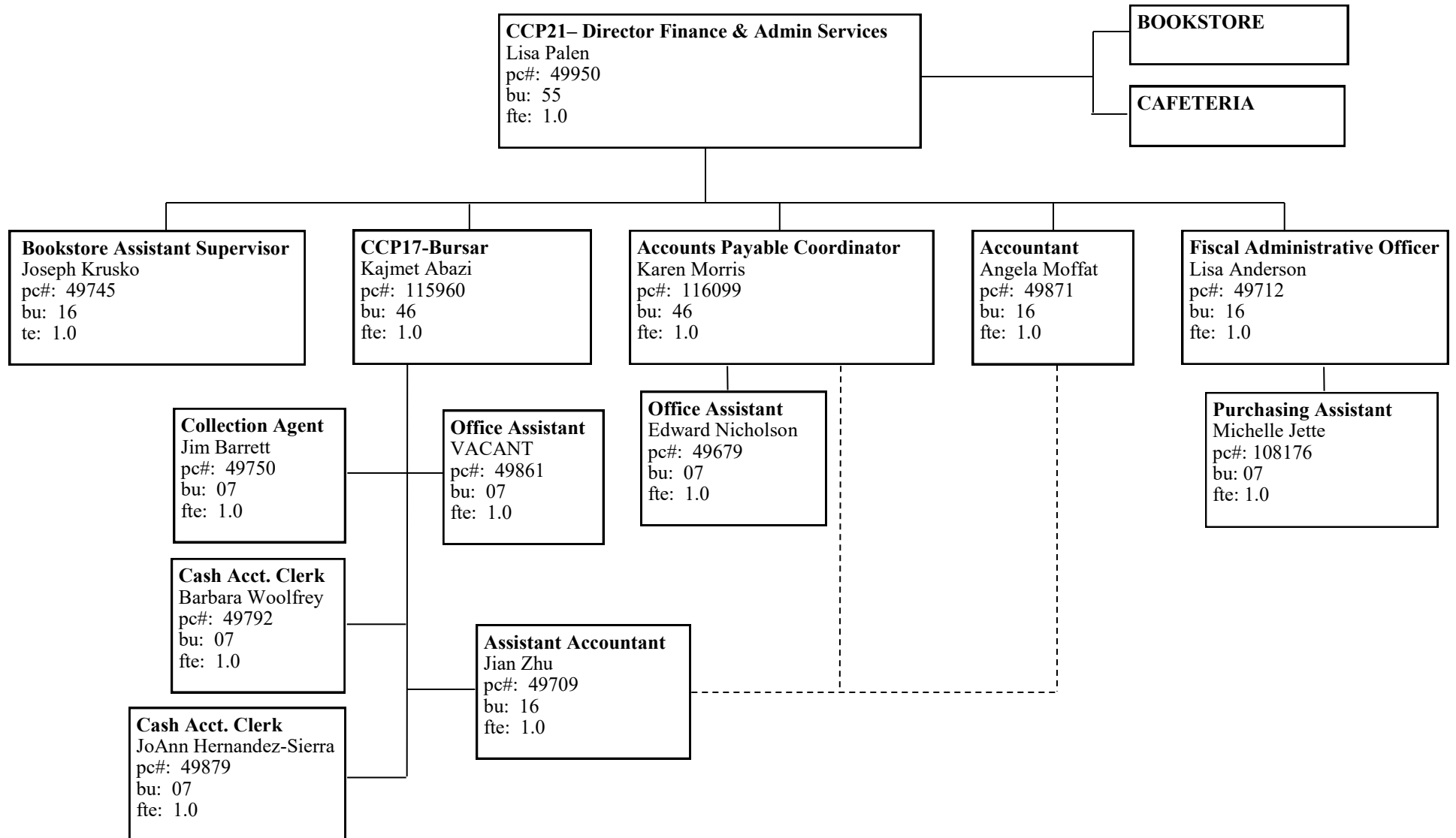
Naugatuck Valley Community College
ORGANIZATIONAL CHART

Information Technology - Page 3



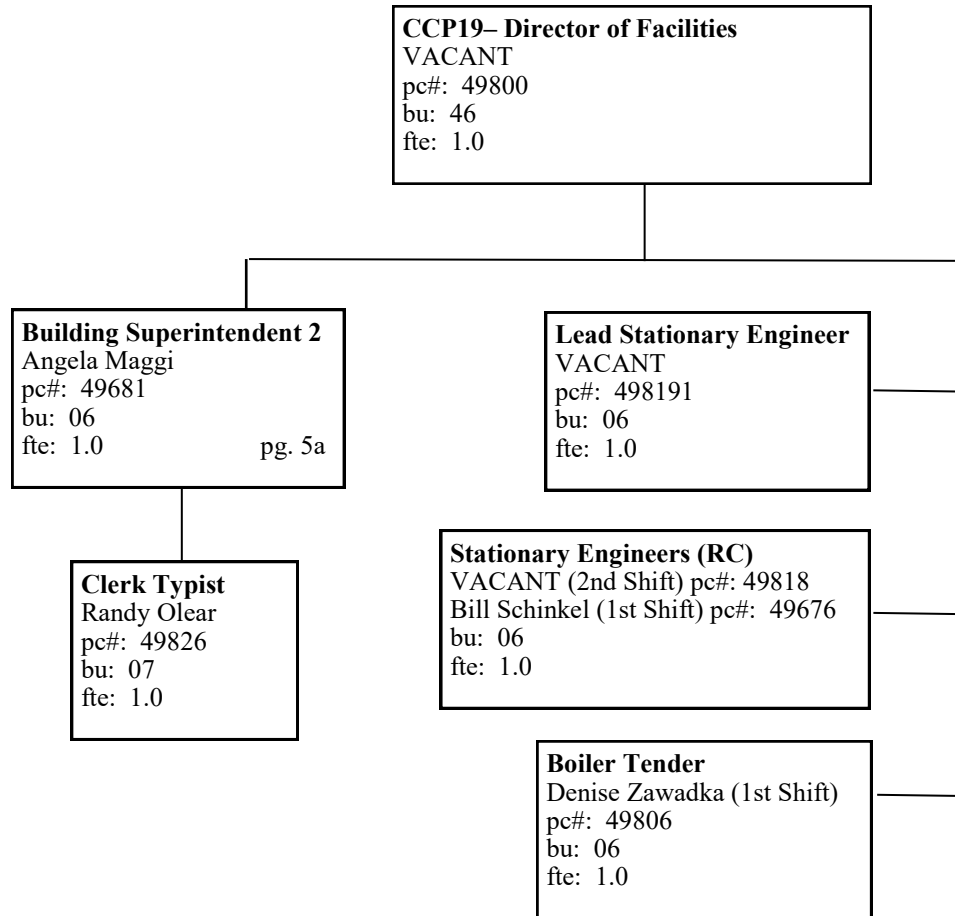
Naugatuck Valley Community College
ORGANIZATIONAL CHART

Finance & Administrative Services - Page 4



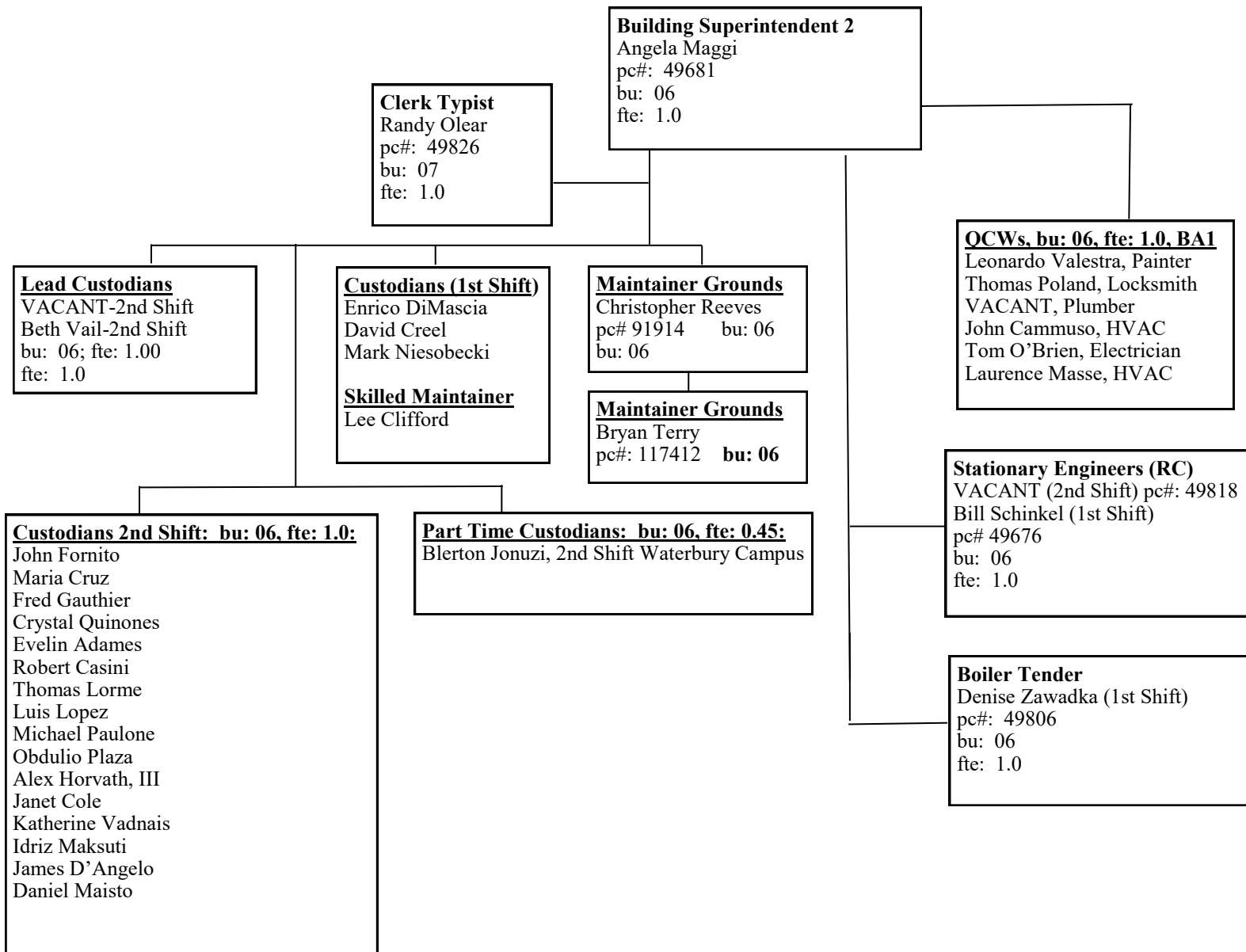
Naugatuck Valley Community College
ORGANIZATIONAL CHART

Facilities Department - Page 5



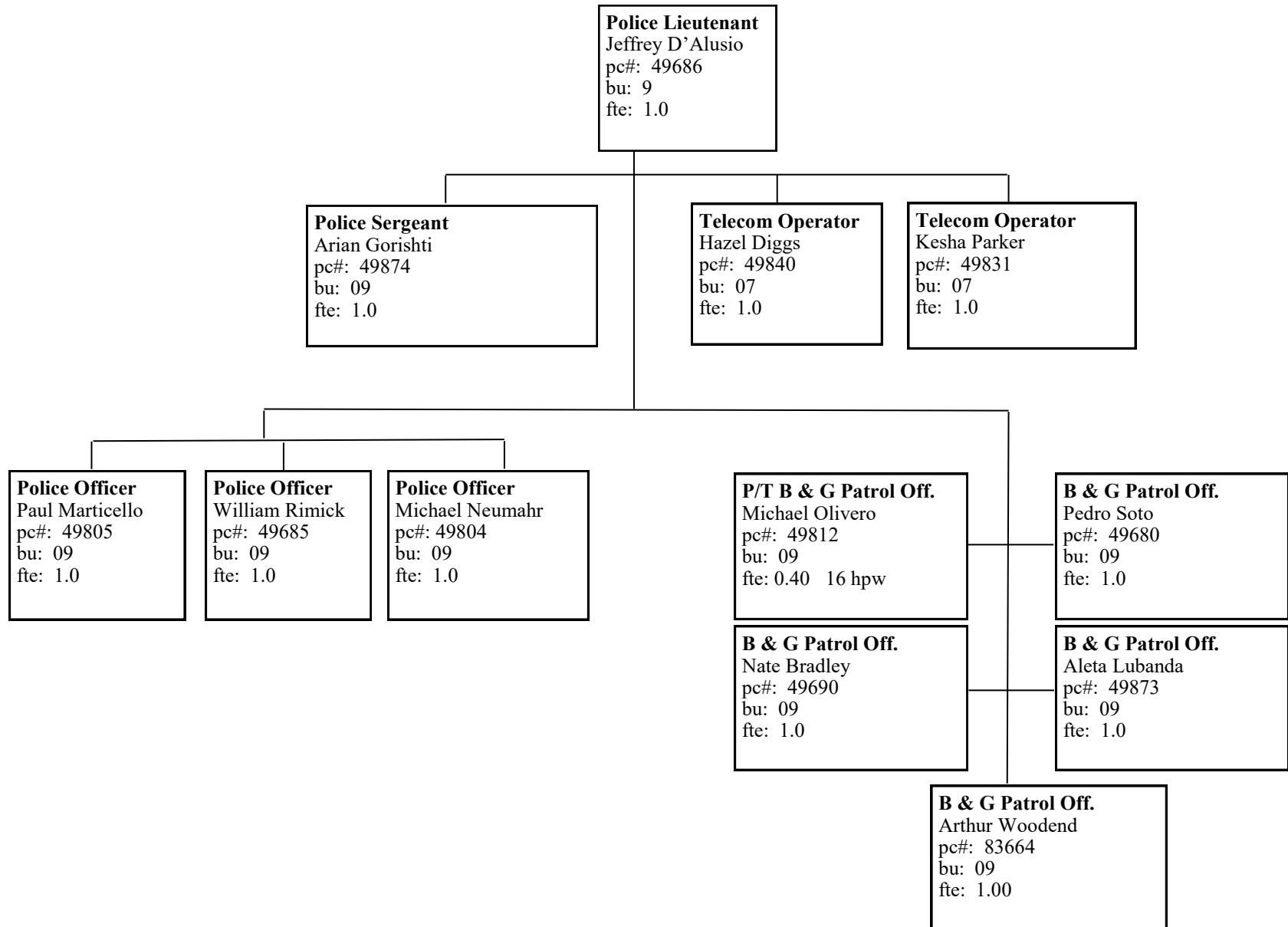
Naugatuck Valley Community College
ORGANIZATIONAL CHART

Maintenance Department - Page 6



Naugatuck Valley Community College
ORGANIZATIONAL CHART

Public Safety Department - Page 7



Naugatuck Valley Community College
ORGANIZATIONAL CHART

Advanced Manufacturing Technology Center - Page 8

CCP19– Program Director– Advanced Manufacturing Technology Center
Joseph DeFeo
pc#: 102568
bu: 46
fte: 1.0

CCP18– Business & Industry Instructor (MFG CTR)
Anthony Difederico
pc#: 101782
bu: 46
fte: 1.0

CCP18– Business & Industry Instructor (MFG CTR)
Luiz Santos
pc#: 101783
bu: 46
fte: 1.0

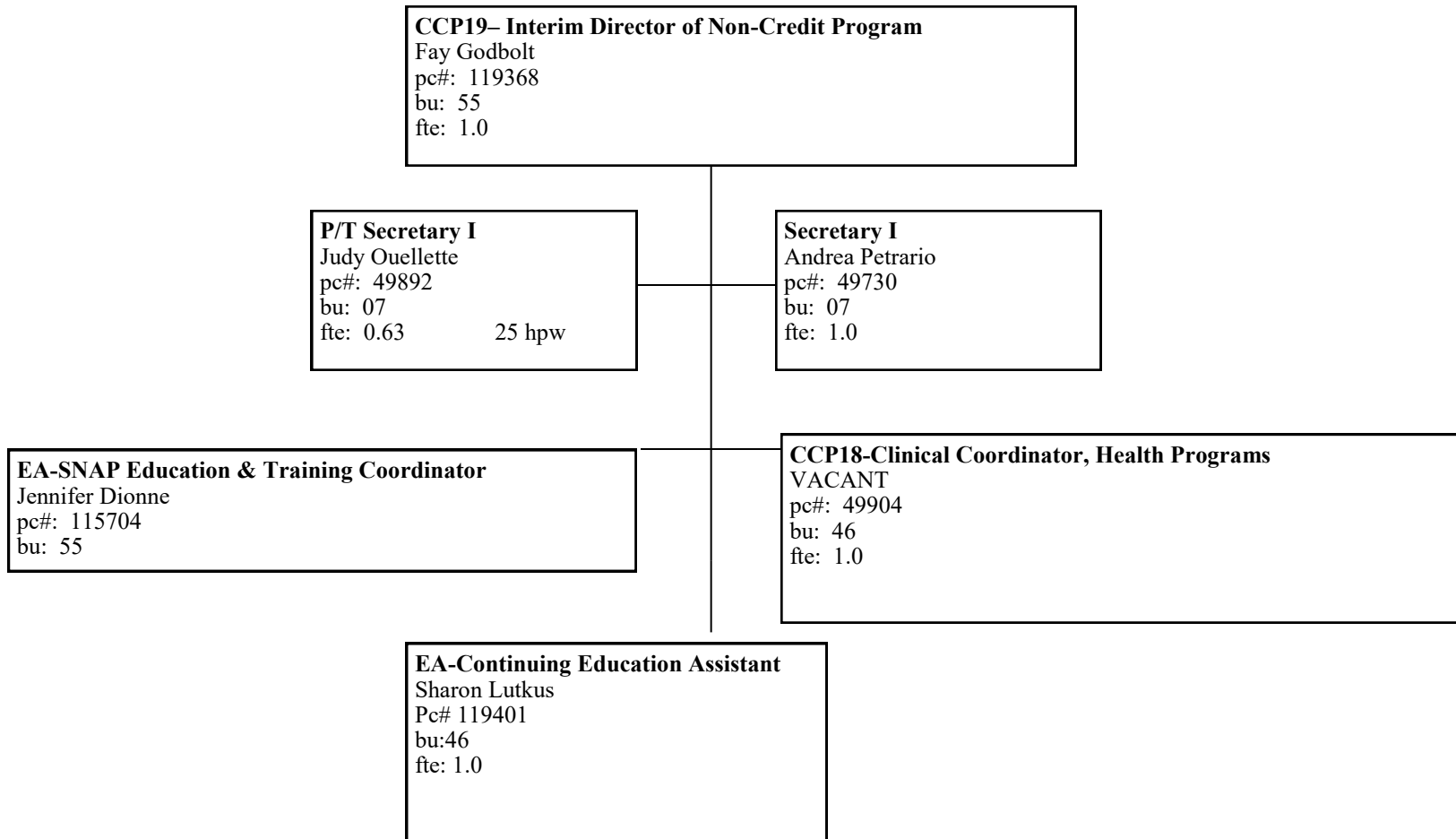
CCP18– Business & Industry Instructor (MFG CTR)
Curtiss McClure
pc#: 103435
bu: 46
fte: 1.0

CCP18-Business & Industry Instructor (MFG CTR)
Gregory Tirita
pc#: 122199
bu: 46
fte: 1.0

CCP16– Academic Associate (MFG CTR)
Charles Buchanan
pc#: 101781
bu: 46
fte: 1.0

Naugatuck Valley Community College
ORGANIZATIONAL CHART

Community & Economic Development - Page 9



Naugatuck Valley Community College
ORGANIZATIONAL CHART

Center for Job Placement and College Opportunities (CJPCO) - Page 10

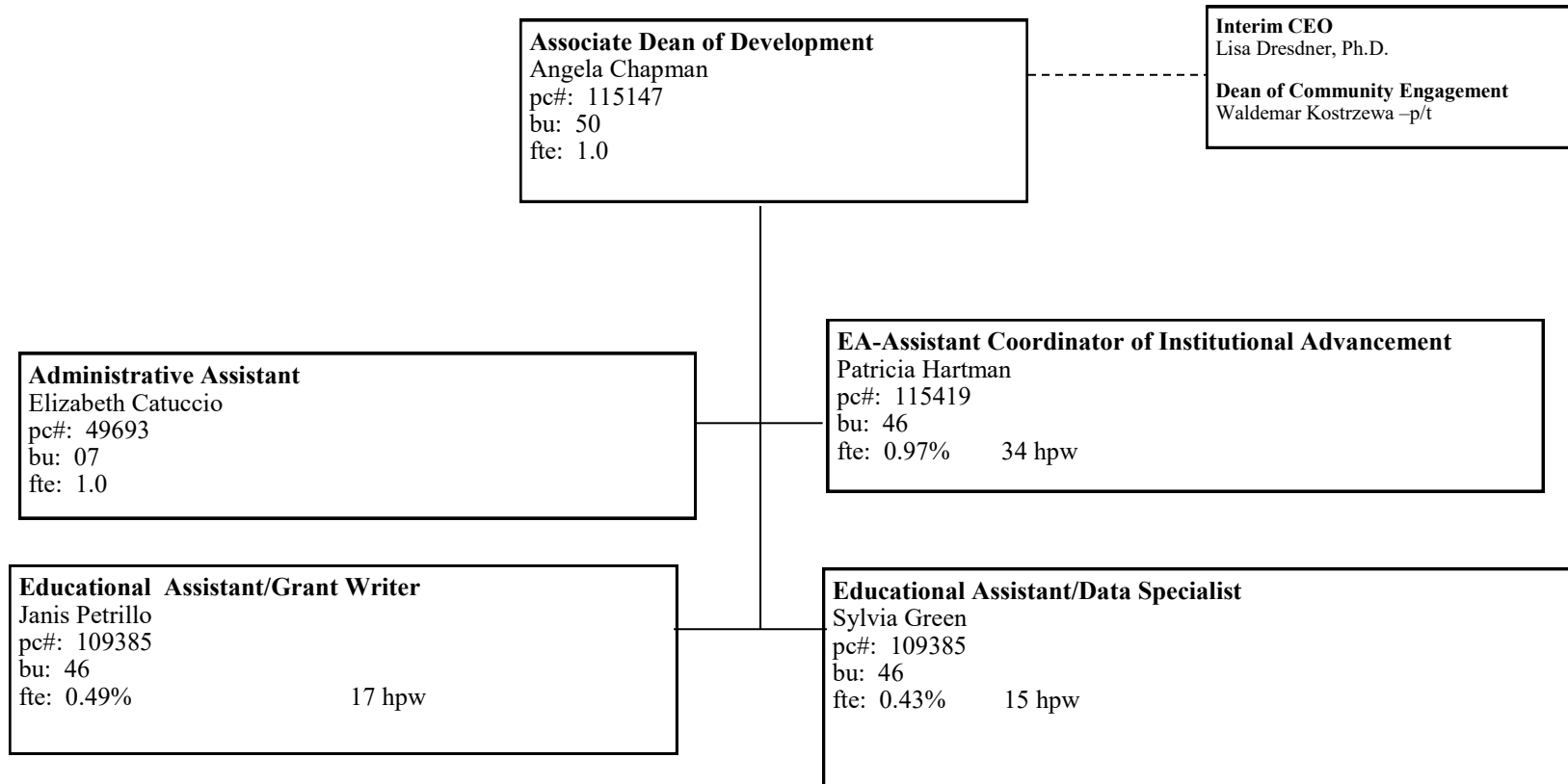
CCP19– Director Center for Job Placement and College Opportunities (CJPCO)
Antony Wormack
pc#: 00113744
bu: 55
fte: 1.0

Secretary II
Allison Terry
pc#: 49759
bu: 07
fte: 1.0

CCP19– Director of Workforce Transition & Outreach
Linda Stango
pc#: 49833
bu: 46
fte: 1.0

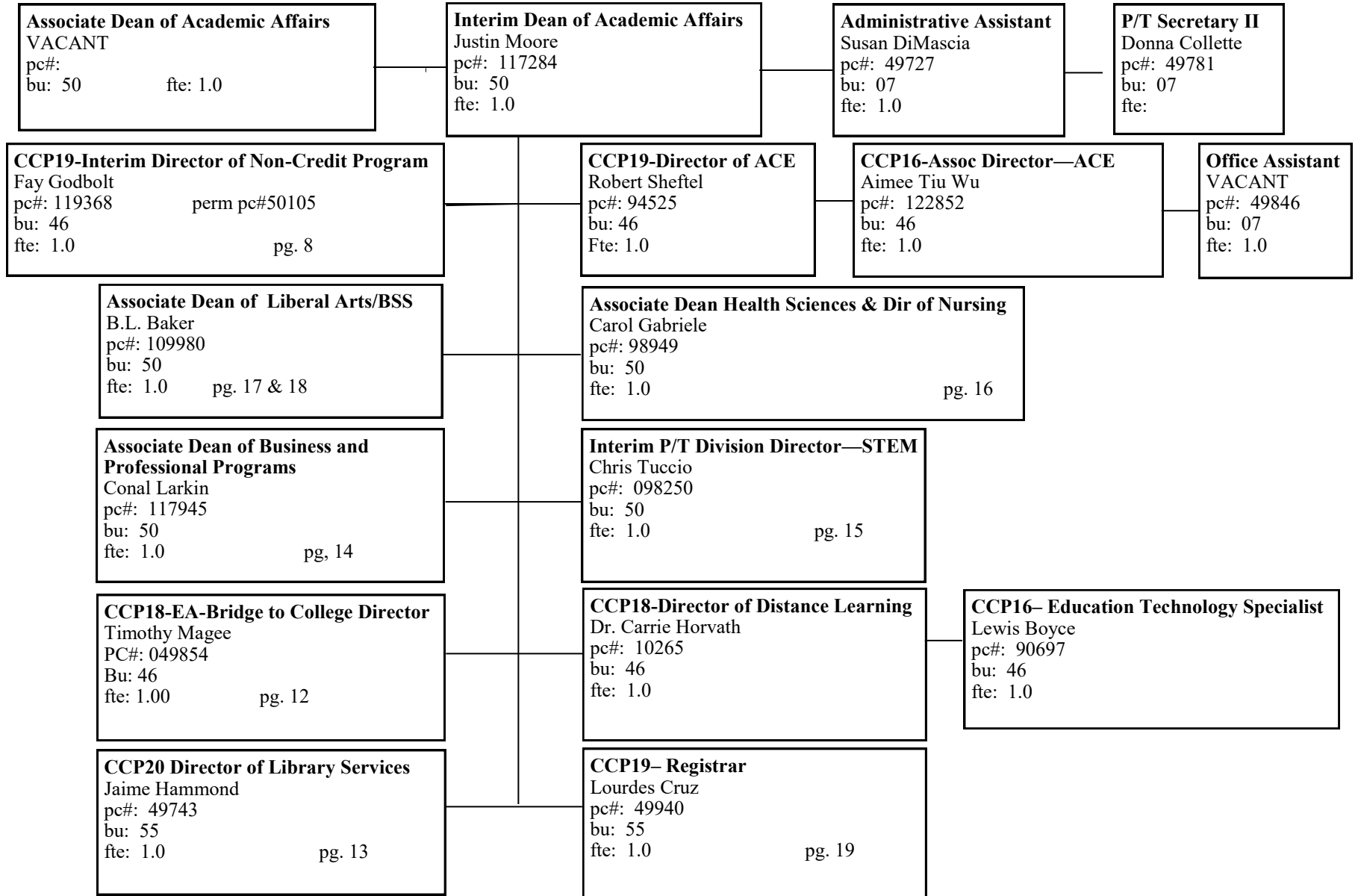
Naugatuck Valley Community College
ORGANIZATIONAL CHART

Associate Dean of Development - Page 11



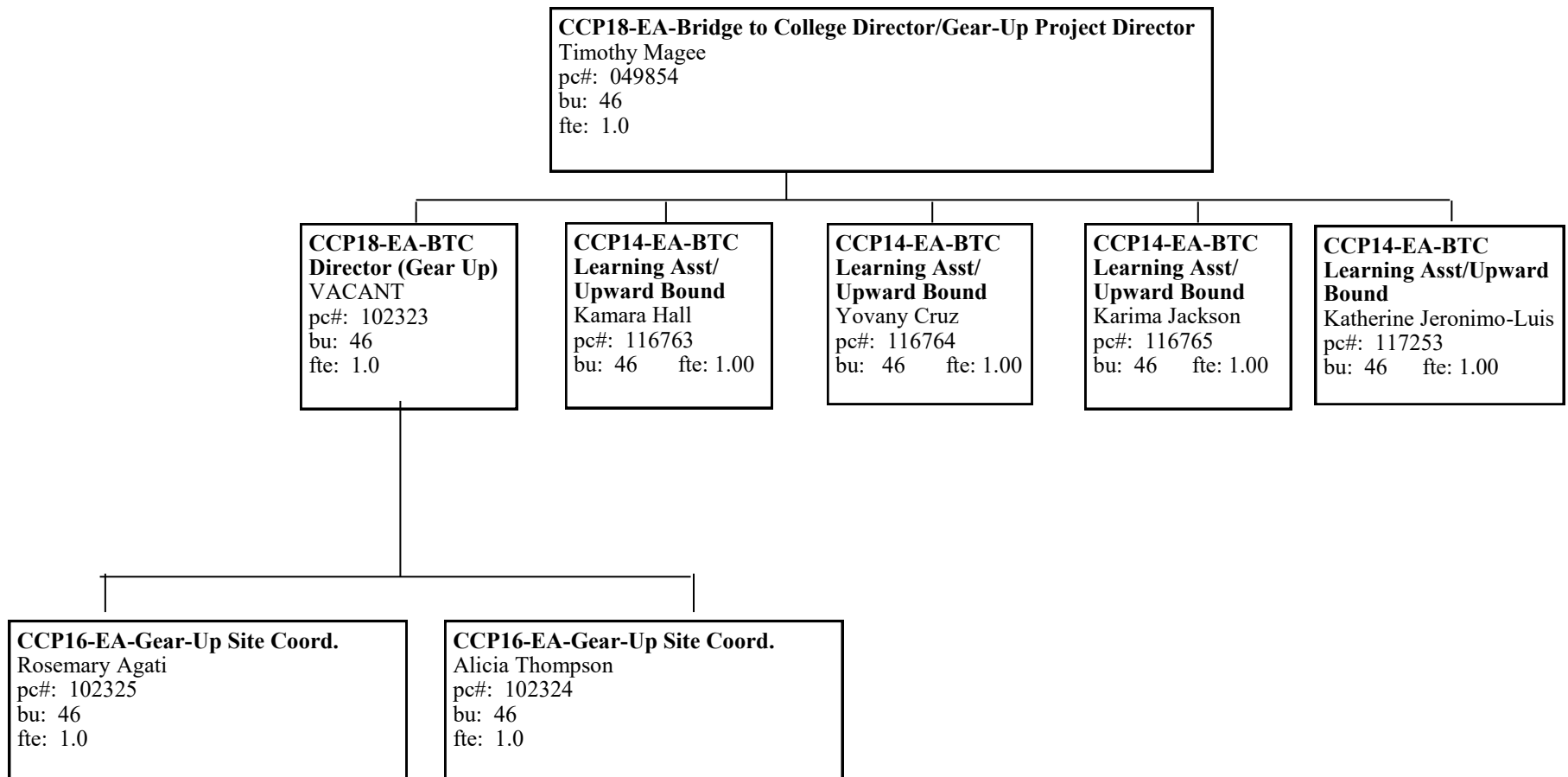
Naugatuck Valley Community College
ORGANIZATIONAL CHART

Dean of Academic Affairs - Page 12



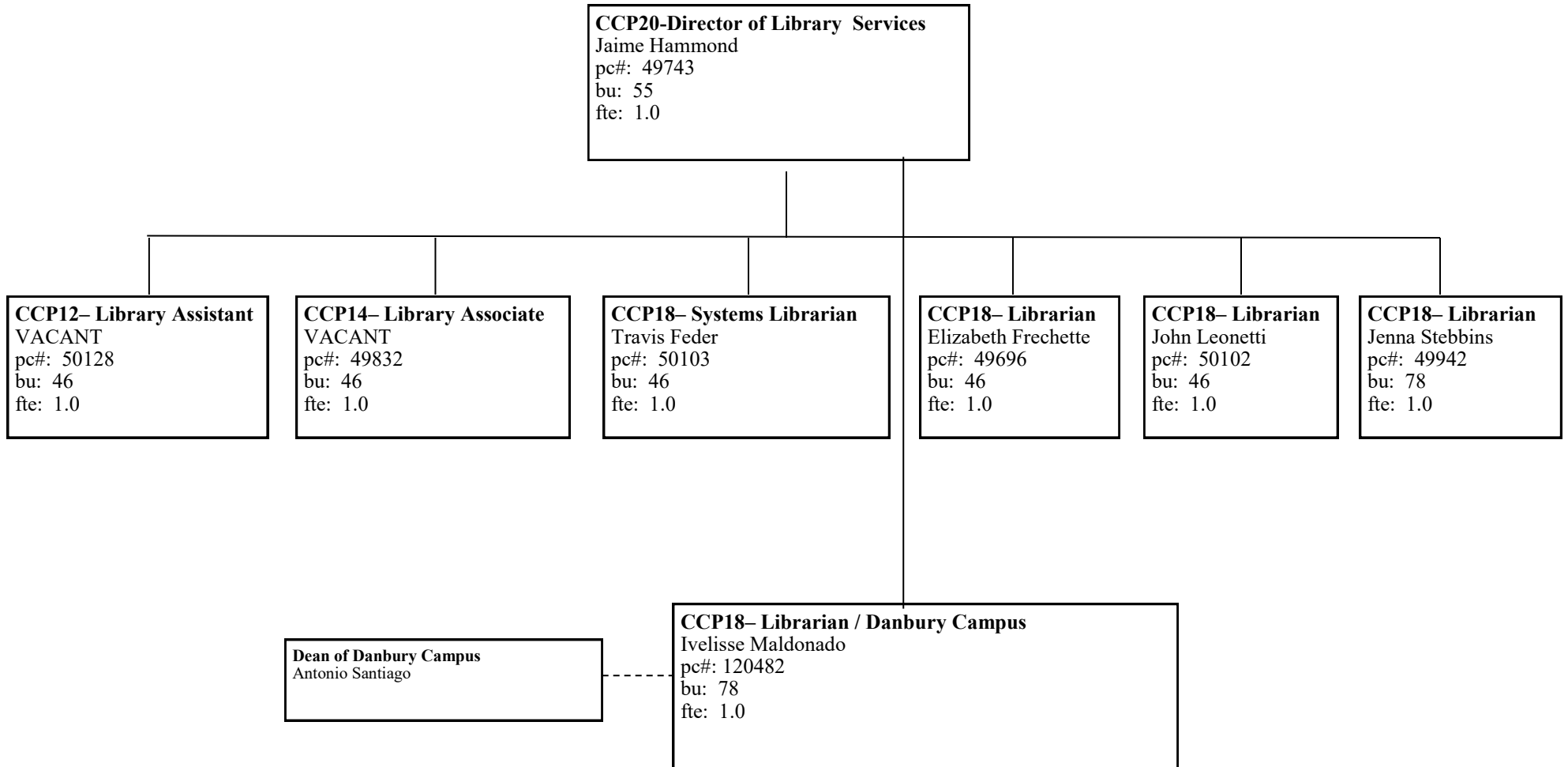
Naugatuck Valley Community College
ORGANIZATIONAL CHART

Bridge to College - Page 13



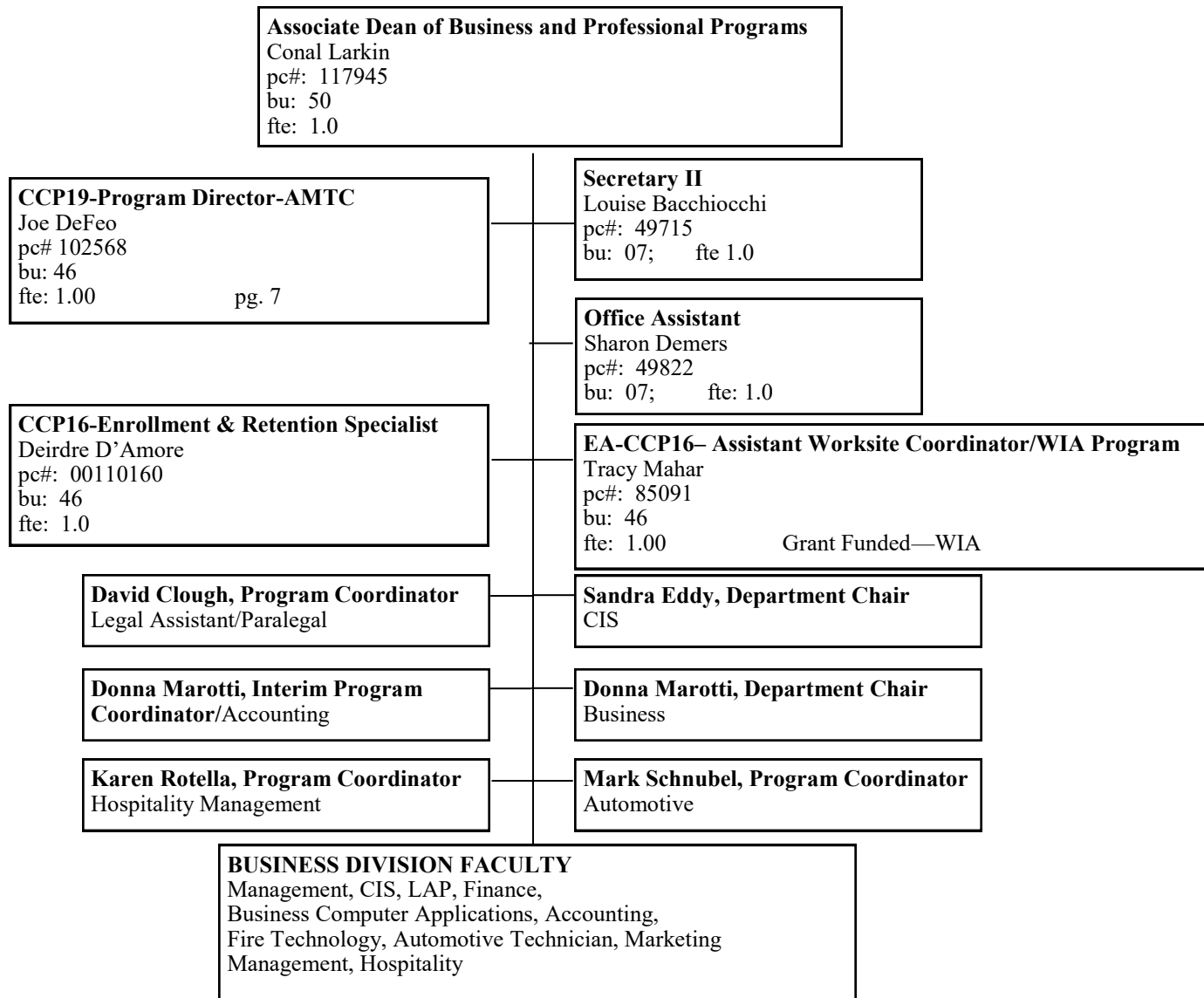
Naugatuck Valley Community College
ORGANIZATIONAL CHART

Library Services - Page 14



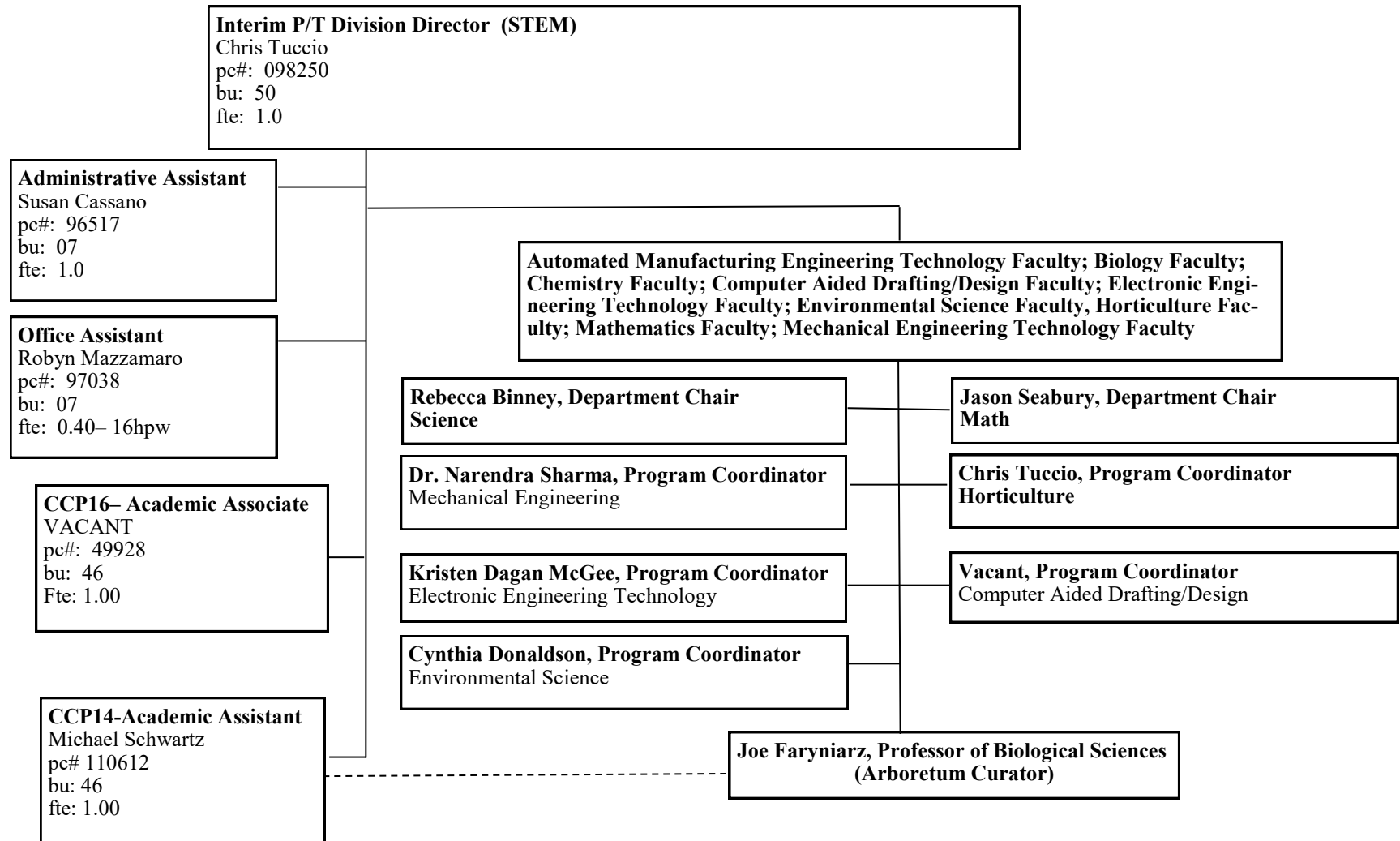
Naugatuck Valley Community College
ORGANIZATIONAL CHART

Associate Dean of Business and Professional Programs Division - Page 15



Naugatuck Valley Community College
ORGANIZATIONAL CHART

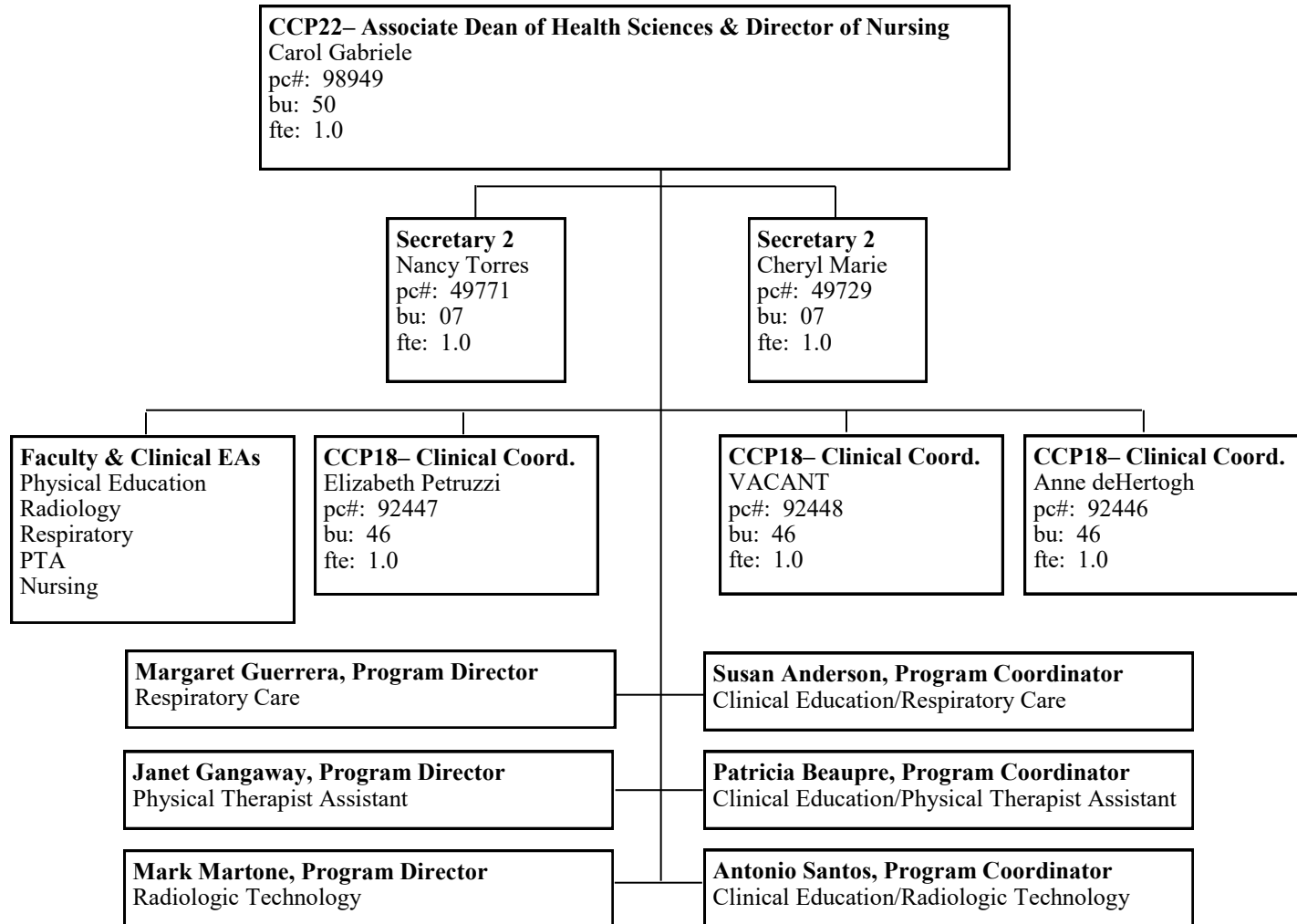
Associate Dean of Science, Technology, Engineering & Mathematics (STEM) - Page 16



* As a result of department merger, Engineering merged with Math and Science to create STEM

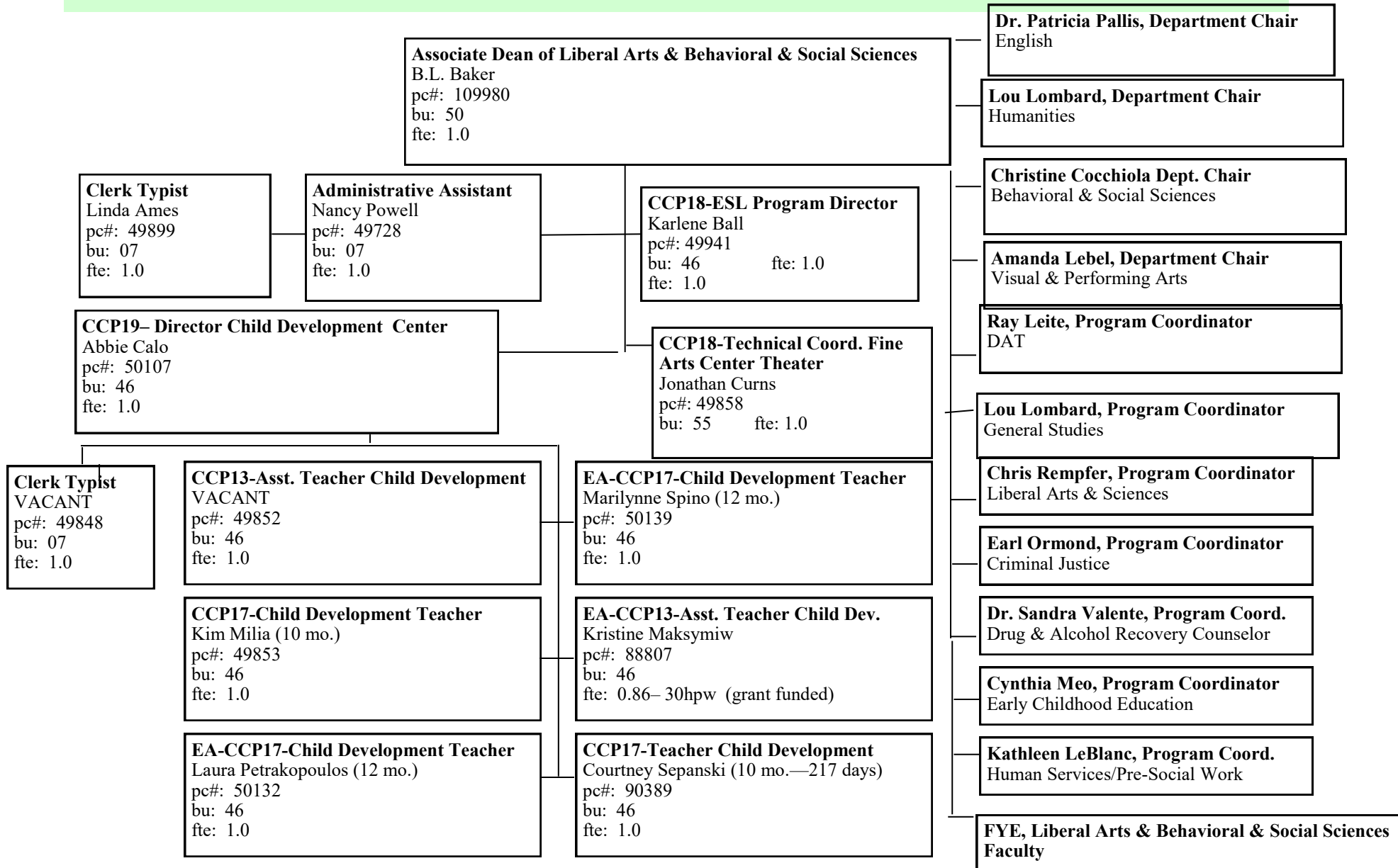
Naugatuck Valley Community College
ORGANIZATIONAL CHART

Associate Dean of Health Sciences & Director of Nursing - Page 17



Naugatuck Valley Community College
ORGANIZATIONAL CHART

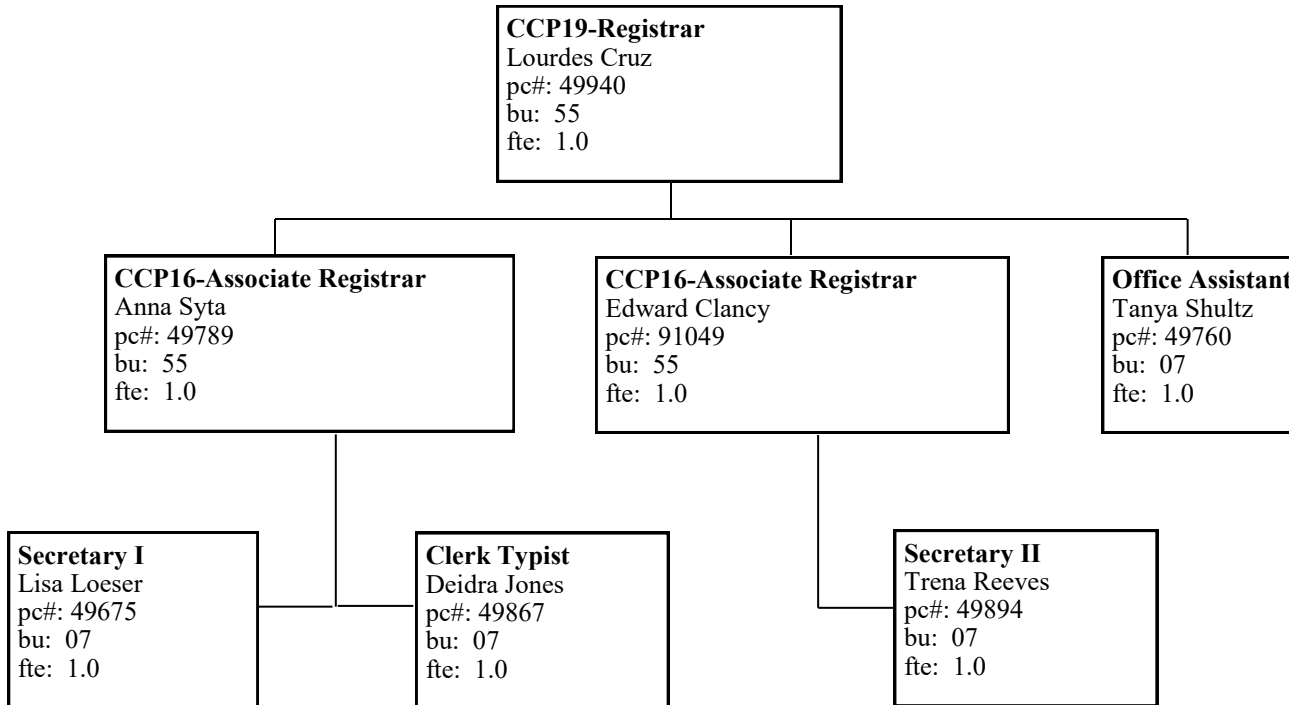
Associate Dean of Liberal Arts Behavioral & Social Sciences Division (LABSS) - Page 18



* As a result of department merger, Behavioral & Social Sciences and Humanities merged to create LABSS.

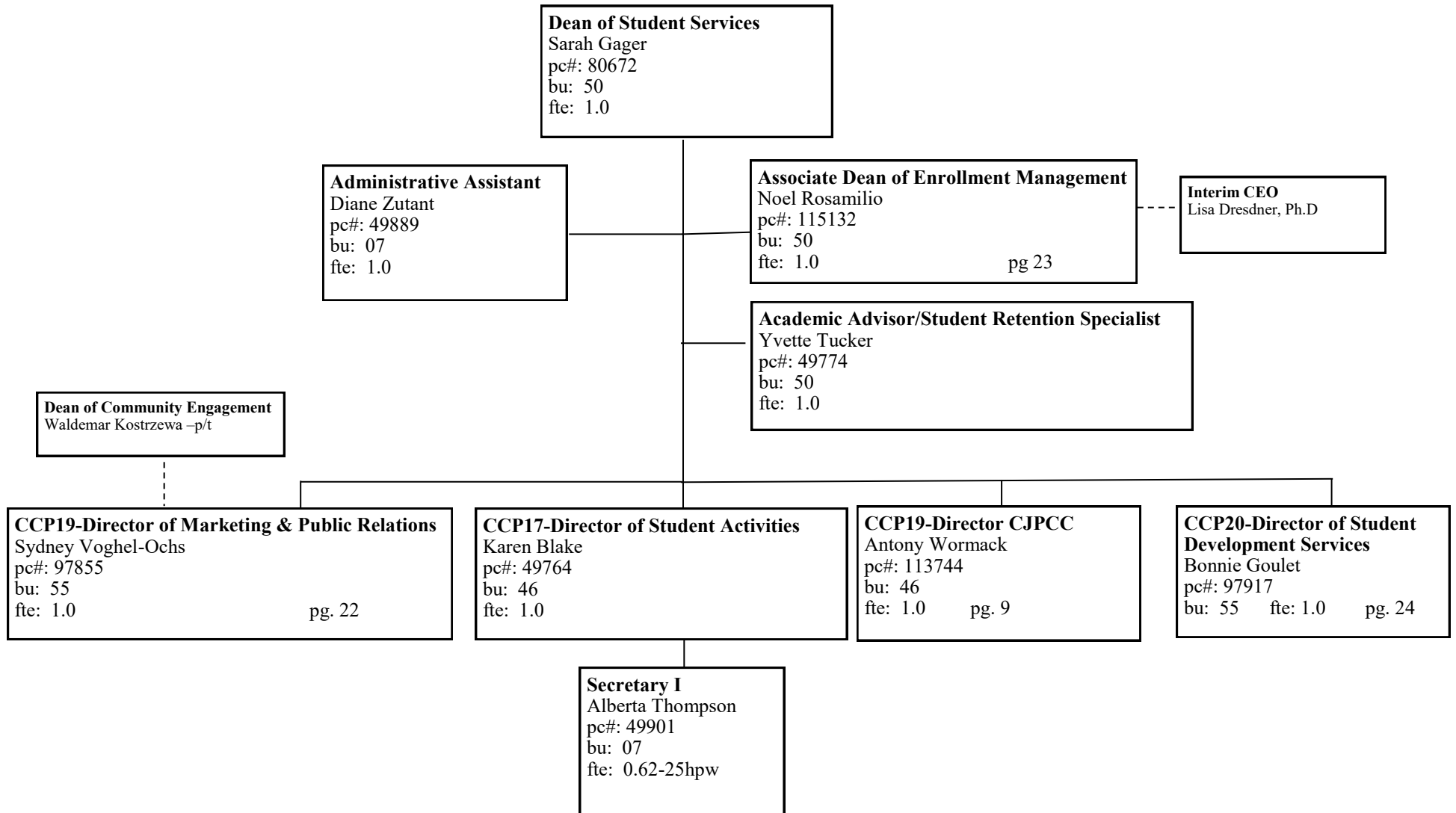
Naugatuck Valley Community College
ORGANIZATIONAL CHART

Office of the Registrar - Page 19



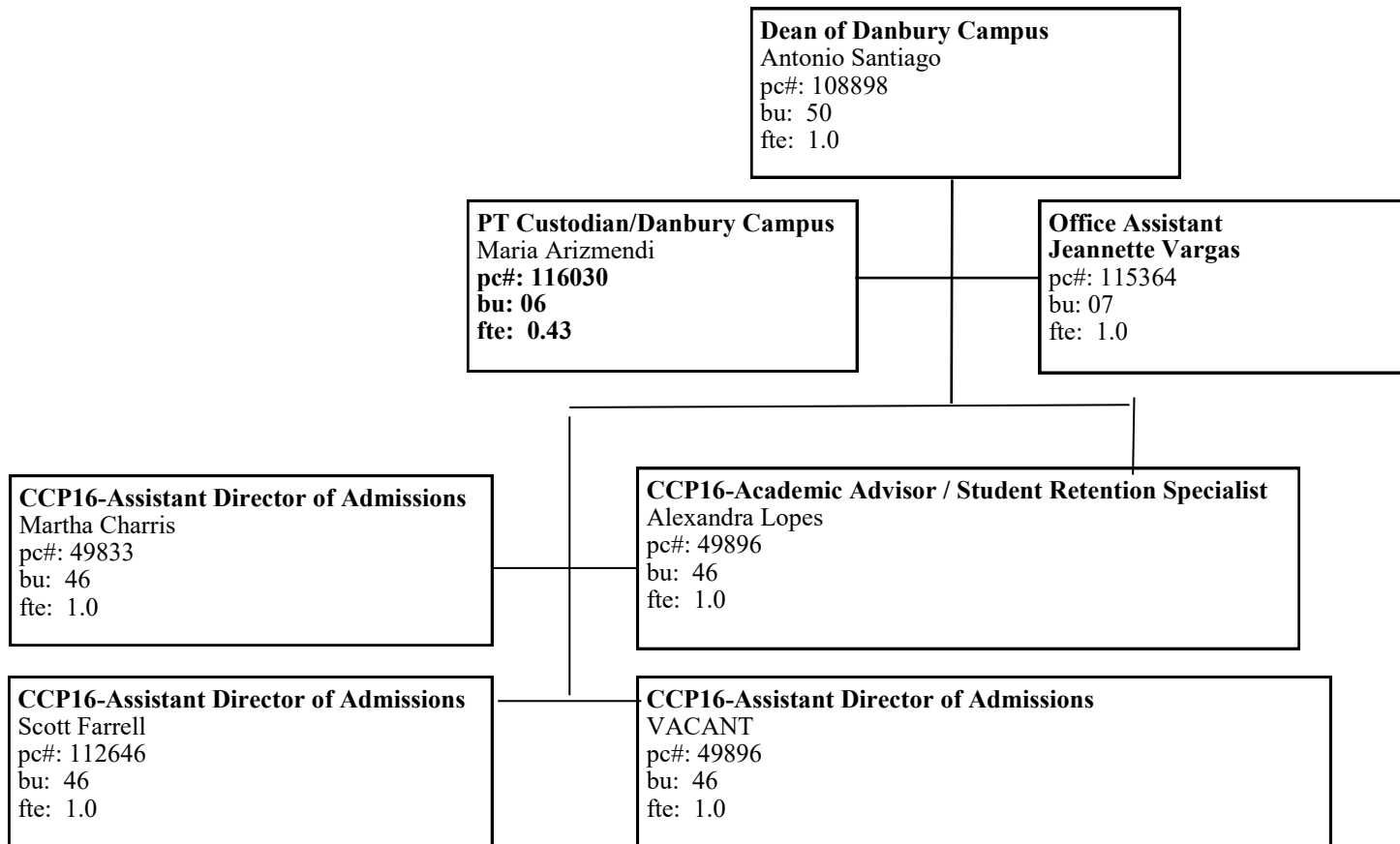
Naugatuck Valley Community College
ORGANIZATIONAL CHART

Dean of Students - Page 20



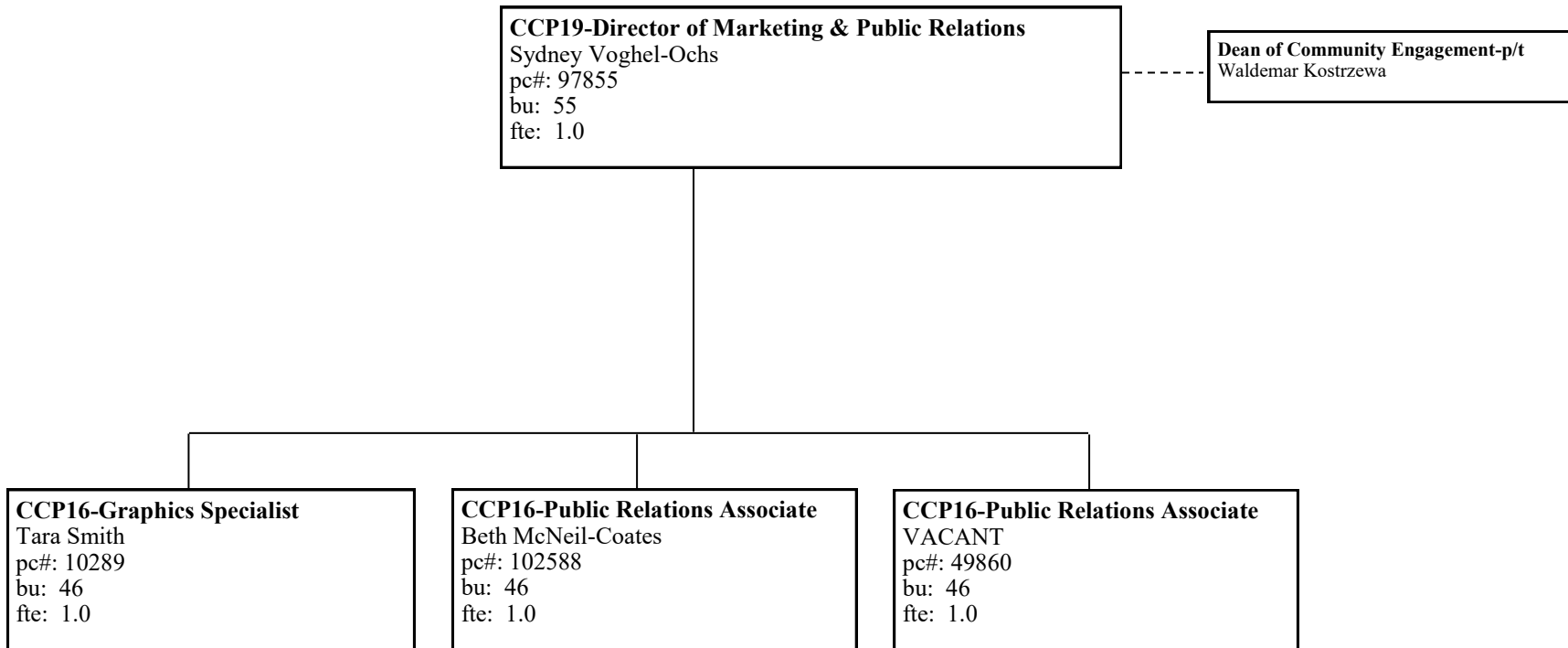
Naugatuck Valley Community College
ORGANIZATIONAL CHART

Dean of Danbury Campus - Page 21



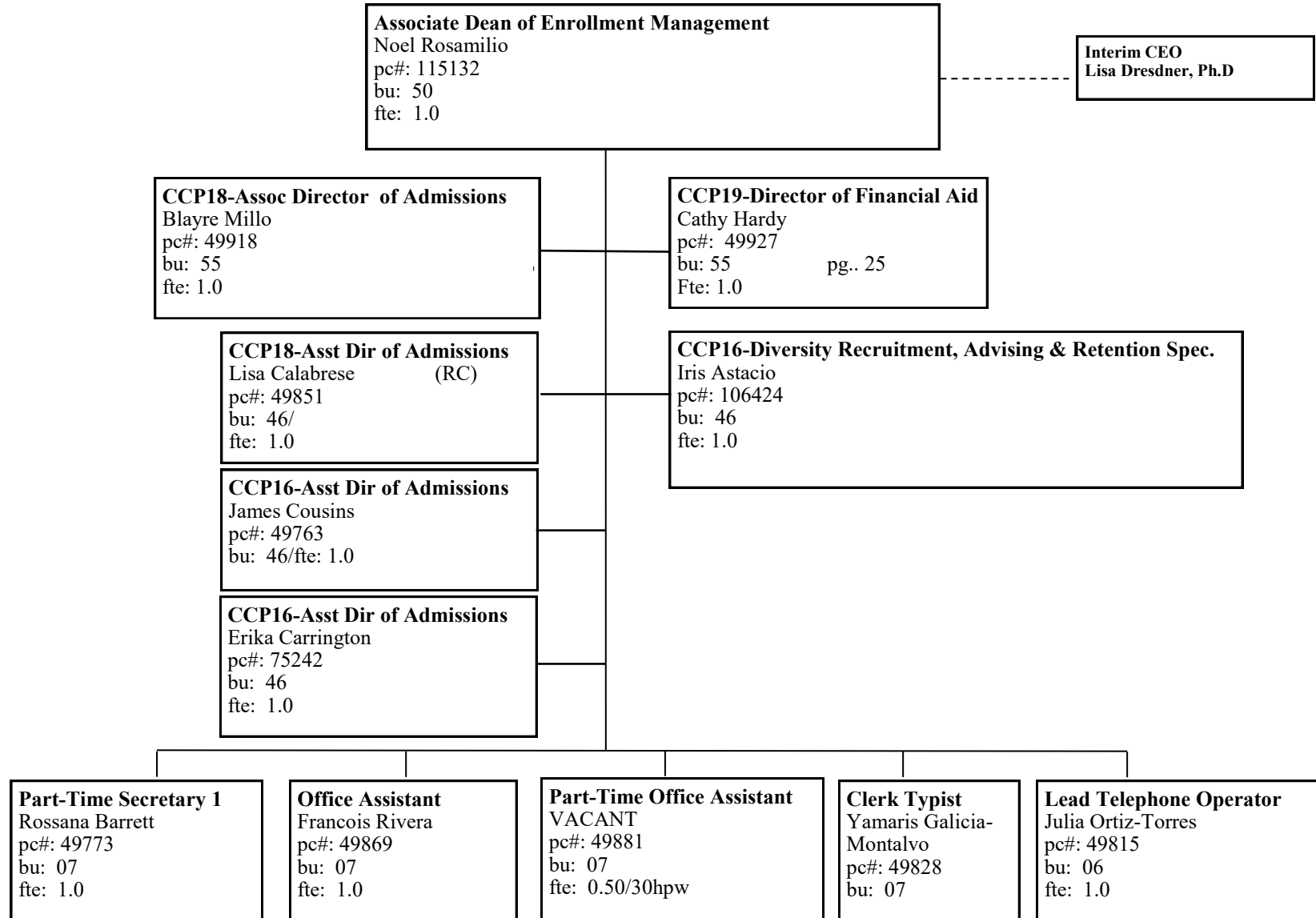
Naugatuck Valley Community College
ORGANIZATIONAL CHART

Marketing & Public Relations - Page 22



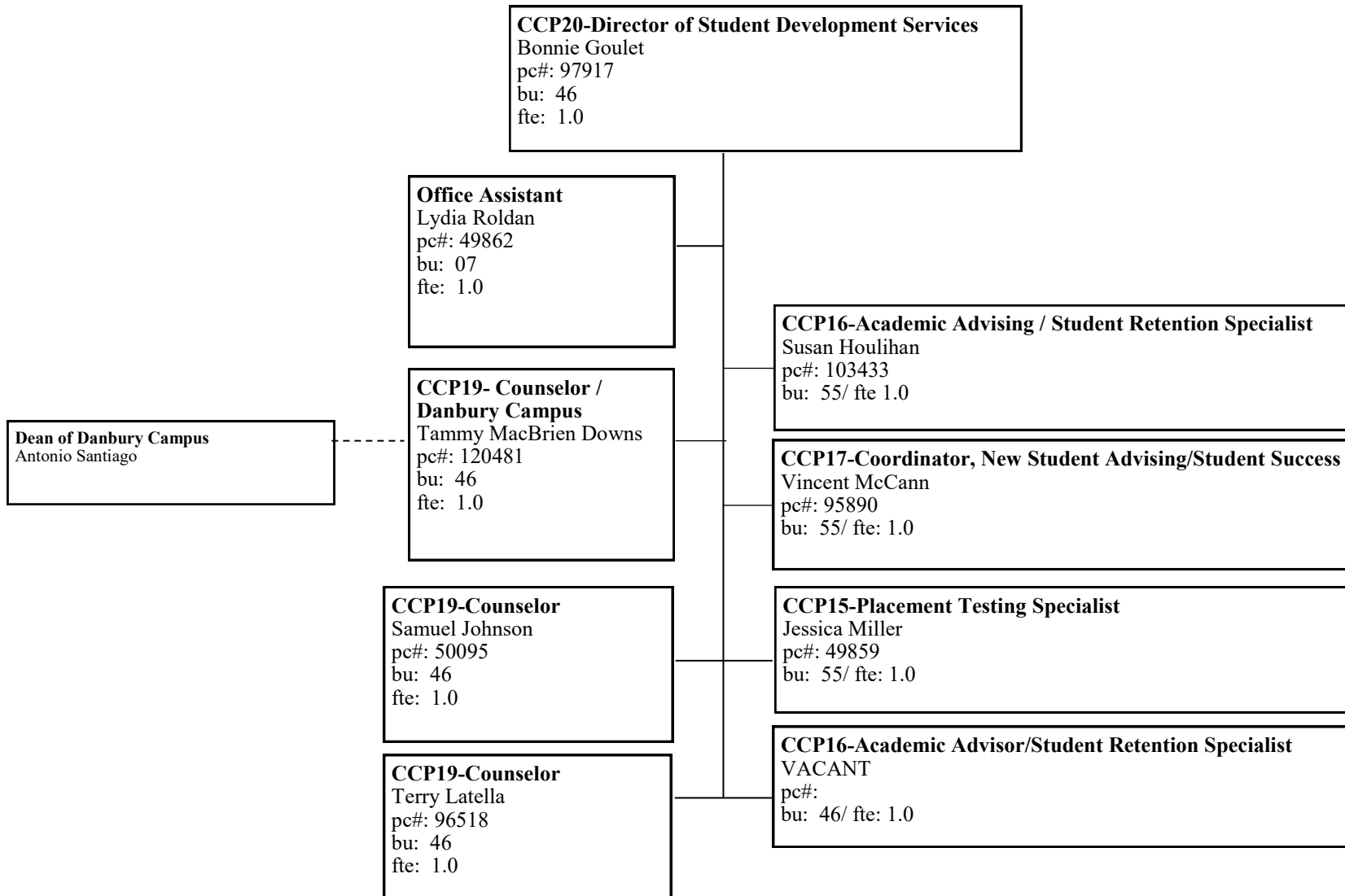
Naugatuck Valley Community College
ORGANIZATIONAL CHART

Associate Dean of Enrollment Management-Page 23



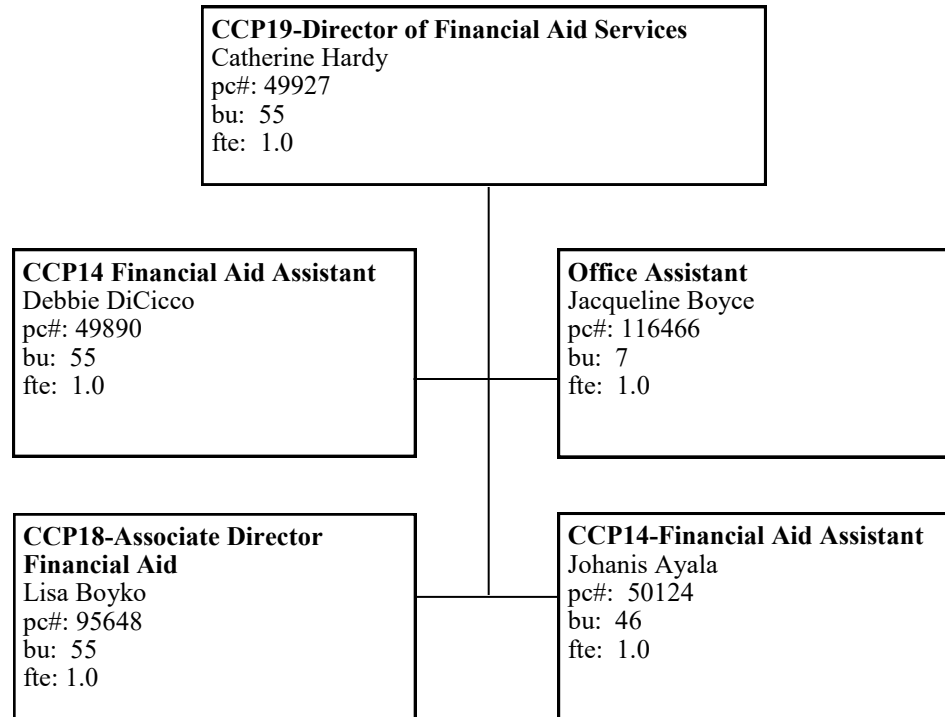
Naugatuck Valley Community College
ORGANIZATIONAL CHART

Center for Academic Planning Student Success (CAPSS)- Page 24



Naugatuck Valley Community College
ORGANIZATIONAL CHART

Financial Aid Services - Page 25



Naugatuck Valley Community College
ORGANIZATIONAL CHART

Office of Institutional Research and Effectiveness- Page 26

Interim Director of Institutional Research and Effectiveness
Sohair Omar
PC#: 105262
Bu: 46
fte: 1.0

CCP17-Research Specialist (TSHC)
Sohair Omar (salary adjustment
p#:105262 for additional duties)
bu: 46
fte: 1.0

EA-Institutional Research
Alan Sturtz
pc#: 113396
bu: 46
fte: 0.49%